

**TOURISM INDICATORS**

AUSTRALIA

EMBARGO: 11.30AM (CANBERRA TIME) FRI 8 FEB 2002

C O N T E N T S

	<i>page</i>
Notes	2
Key tourism indicators	3
In brief	5
FEATURE ARTICLE	
Counts of accommodation establishments and capacity at September 2001	8
Business expectations — major tourism related industries	20
TABLES	
List of tables	25
Tourist accommodation	27
International tourism	65
ADDITIONAL INFORMATION	
Explanatory notes	69
Glossary	74
Appendix — list of features articles	77

- For further information about these and related statistics, please contact Linda Fardell on Canberra 02 6252 7192, or the National Information and Referral Service on 1300 135 070.

NOTES

FORTHCOMING ISSUES	<table border="0"> <thead> <tr> <th style="text-align: left;"><i>ISSUE (Quarter)</i></th> <th style="text-align: left;"><i>EXPECTED RELEASE DATE</i></th> </tr> </thead> <tbody> <tr> <td>December 2001</td> <td>17 May 2002</td> </tr> <tr> <td>March 2002</td> <td>9 August 2002</td> </tr> </tbody> </table>	<i>ISSUE (Quarter)</i>	<i>EXPECTED RELEASE DATE</i>	December 2001	17 May 2002	March 2002	9 August 2002																																						
<i>ISSUE (Quarter)</i>	<i>EXPECTED RELEASE DATE</i>																																												
December 2001	17 May 2002																																												
March 2002	9 August 2002																																												
ABOUT THIS PUBLICATION	<p>This publication brings together tourism data from a number of sources, including data from the quarterly Survey of Tourist Accommodation (STA) and the Overseas Arrivals and Departures collection (OAD).</p>																																												
SYMBOLS AND OTHER USAGES	<table border="0"> <tbody> <tr><td>ABS</td><td>Australian Bureau of Statistics</td></tr> <tr><td>ACT</td><td>Australian Capital Territory</td></tr> <tr><td>Aust.</td><td>Australia</td></tr> <tr><td>CPI</td><td>Consumer Price Index</td></tr> <tr><td>DIMIA</td><td>Department of Immigration and Multicultural and Indigenous Affairs</td></tr> <tr><td>n.a.</td><td>not available</td></tr> <tr><td>n.y.a.</td><td>not yet available</td></tr> <tr><td>n.p.</td><td>not published</td></tr> <tr><td>NSW</td><td>New South Wales</td></tr> <tr><td>NT</td><td>Northern Territory</td></tr> <tr><td>NZ</td><td>New Zealand</td></tr> <tr><td>OAD</td><td>Overseas Arrivals and Departures Collection</td></tr> <tr><td>Qld</td><td>Queensland</td></tr> <tr><td>SA</td><td>South Australia</td></tr> <tr><td>STA</td><td>Survey of Tourist Accommodation</td></tr> <tr><td>Tas.</td><td>Tasmania</td></tr> <tr><td>UK</td><td>United Kingdom</td></tr> <tr><td>USA</td><td>United States of America</td></tr> <tr><td>Vic.</td><td>Victoria</td></tr> <tr><td>WA</td><td>Western Australia</td></tr> <tr><td>—</td><td>nil or rounded to zero</td></tr> <tr><td>. .</td><td>not applicable</td></tr> </tbody> </table>	ABS	Australian Bureau of Statistics	ACT	Australian Capital Territory	Aust.	Australia	CPI	Consumer Price Index	DIMIA	Department of Immigration and Multicultural and Indigenous Affairs	n.a.	not available	n.y.a.	not yet available	n.p.	not published	NSW	New South Wales	NT	Northern Territory	NZ	New Zealand	OAD	Overseas Arrivals and Departures Collection	Qld	Queensland	SA	South Australia	STA	Survey of Tourist Accommodation	Tas.	Tasmania	UK	United Kingdom	USA	United States of America	Vic.	Victoria	WA	Western Australia	—	nil or rounded to zero	. .	not applicable
ABS	Australian Bureau of Statistics																																												
ACT	Australian Capital Territory																																												
Aust.	Australia																																												
CPI	Consumer Price Index																																												
DIMIA	Department of Immigration and Multicultural and Indigenous Affairs																																												
n.a.	not available																																												
n.y.a.	not yet available																																												
n.p.	not published																																												
NSW	New South Wales																																												
NT	Northern Territory																																												
NZ	New Zealand																																												
OAD	Overseas Arrivals and Departures Collection																																												
Qld	Queensland																																												
SA	South Australia																																												
STA	Survey of Tourist Accommodation																																												
Tas.	Tasmania																																												
UK	United Kingdom																																												
USA	United States of America																																												
Vic.	Victoria																																												
WA	Western Australia																																												
—	nil or rounded to zero																																												
. .	not applicable																																												

Dennis Trewin
Australian Statistician

KEY TOURISM INDICATORS

	Unit	Period	Latest figures	Percentage change on	
			Value	Previous period	Corresponding period last year
Tourist accommodation—supply and demand(a)					
Licensed hotels, motels, guest houses and serviced apartments					
Establishments	no.	Sep qtr 2001	3 816	-0.2	-0.3
Guest rooms/units	'000	Sep qtr 2001	196.7	0.1	0.8
Bed spaces	'000	Sep qtr 2001	566.8	-0.2	-0.4
Room nights occupied	'000	Sep qtr 2001	10 619.0	7.6	1.6
Room occupancy rate(b)	%	Sep qtr 2001	58.7	3.5	0.3
Guest nights	'000	Sep qtr 2001	19 182.2	10.5	3.2
Guest arrivals	'000	Sep qtr 2001	8 427.1	7.4	5.6
Takings from accommodation	\$m	Sep qtr 2001	1 226 522	10.4	-7.8
Caravan parks(c)					
Establishments	no.	End Dec 2000	1 800	-0.2	n.a.
Powered sites and cabins	no.	End Dec 2000	200 099	-0.1	n.a.
Holiday flats, units and houses(c)					
Letting entities	no.	End Dec 2000	632	0.2	n.a.
Flats, units and houses	no.	End Dec 2000	29 835	5.7	n.a.
Visitor hostels(c)					
Establishments	no.	End Dec 2000	466	0.0	n.a.
Bed spaces	no.	End Dec 2000	40 659	0.8	n.a.
Tourist accommodation construction					
Hotels, etc. approved(d)	\$m	Nov 2001	34.0	51.8	9.0
Hotels, etc. commenced(e)	\$m	Sep qtr 2001	68.9	-47.9	-20.7
Hotels, etc. under construction(e)	\$m	Sep qtr 2001	573.1	1.5	-43.8
Hotels, etc. completed(e)	\$m	Sep qtr 2001	73.9	-63.2	-78.5
Domestic tourism(f)					
Number of overnight trips	'000	Year end Jun 2001	73 819	..	2.5
Number of visitor nights	'000	Year end Jun 2001	291 628	..	0.3
International visitor arrivals					
Number of visitor arrivals(g)	'000	Sep 2001	358.0	-2.1	-11.9
Number of visitor arrivals(g)	'000	Sep qtr 2001	1 184.8	8.1	-1.6
Number of visitor arrivals(g)	'000	Year end Jun 2001	5 061.3	..	8.8
Number of person days(h)	'000	Jun qtr 2000	28 195.4	-34.4	18.8
Median intended length of stay(h)	days	Jun qtr 2000	10.2	-3.8	1.0
Expenditure by international visitors(i)	\$m	Year end Jun 2000	9 368.6	..	5.0
International visitor nights(i)	'000	Year end Jun 2000	113 176	..	8.8
Australian departures					
Short-term departures(g)	'000	Jun 2000	303.8	15.5	5.0
Short-term departures(g)	'000	Jun qtr 2000	896.4	24.2	12.6
Short-term departures(g)	'000	Year end Jun 2000	3 332.3	..	4.5
Number of person days(h)	'000	Jun qtr 2000	32 524.4	18.1	12.2
Median intended length of stay(h)	days	Jun qtr 2000	16.3	10.9	1.2

(a) *Tourist Accommodation, Australia* (Cat. no. 8635.0).

(b) Change is shown in terms of percentage points.

(c) For caravan parks, holiday flats and units, and visitor hostels the previous period refers to September quarter 2000.

(d) *Building Approvals, Australia* (Cat. no. 8731.0). For monthly reference periods, the previous period is three months prior to the current month. The previous period is therefore August 2001.

(e) *Building Activity, Australia* (Cat. no. 8752.0).

(f) Bureau of Tourism Research, National Visitor Survey: Travel by Australians.

(g) *Overseas Arrivals and Departures, Australia* (Cat. no. 3401.0).

(h) Overseas Arrivals and Departures Collection.

(i) Bureau of Tourism Research, International Visitor Survey. Excludes international airfares and inclusive package tours purchased outside Australia.

KEY TOURISM INDICATORS

			Latest figures	Percentage change on	
	Unit	Period	Value	Previous period	Corresponding period last year
Tourism satellite account(a)					
Tourism gross domestic product	\$b	1997-98	25.2	n.a.	n.a.
Tourism contribution to gross domestic product	%	1997-98	4.5	n.a.	n.a.
Tourism gross value added(b)	\$b	1997-98	22.4	n.a.	n.a.
Tourism contribution to total industry gross value added	%	1997-98	4.3	n.a.	n.a.
Tourism exports of goods and services	\$b	1997-98	12.8	n.a.	n.a.
Tourism contribution to total exports of goods and services	%	1997-98	11.2	n.a.	n.a.
Tourism consumption(c)	\$b	1997-98	58.2	n.a.	n.a.
Retail turnover(d)					
Hospitality and services					
Hotels and licensed clubs	\$m	Nov 2001	1 434.8	0.2	9.4
Cafes and restaurants	\$m	Nov 2001	782.9	-2.9	4.8
Selected services	\$m	Nov 2001	253.3	6.3	7.8
Price index(e)					
Holiday travel and accommodation	1989-90=100	Sep qtr 2001	116.0	1.4	-1.4
Employment and earnings					
Persons in tourism-generated employment(f)	'000	1997-98	513	n.a.	n.a.
Tourism contribution to total employment(f)	%	1997-98	6.0	n.a.	n.a.
Accommodation, cafes and restaurants					
Number employed(g)	'000	Nov 2001	458.5	1.5	-4.8
Average weekly hours worked(g)	hours	Nov 2001	31.3	-0.9	-6.3
Proportion employed part-time(g)(h)	%	Nov 2001	49.1	2.7	4.4
Average total weekly earnings(i)	\$	Aug 2001	393.4	0.6	0.6
Female/male ratio of average total full-time weekly earnings(g)(h)	%	Aug 2001	0.89	0.00	0.0
Unemployment rate(g)(h)					
Worked full time for two weeks or more in the last two years in accommodation, cafes and restaurants	%	Nov 2001	7.1	-0.3	3.4
Balance of payments(j)					
Travel exports	\$m	Sep qtr 2001	3 783	17.2	-1.9
Travel imports	\$m	Sep qtr 2001	-3 075	16.3	6.4
Balance on travel services	\$m	Sep qtr 2001	708	21.4	-26.7
Exchange rates(k)					
United States dollar	per \$A	Dec 2001	0.5081	4.6	-7.7
Japanese yen	per \$A	Dec 2001	66.13	14.6	5.8
Euro	per \$A	Dec 2001	0.5696	8.5	-3.2

(a) Australian National Accounts: Tourism Satellite Account (Cat. no. 5249.0).

(b) Tourism gross value added measures the value of tourism gross output at basic output at basic prices by all industries which supply tourism products, less the value of the inputs used in producing these tourism products. Gross value added is the preferred national accounts measure of industry production as it excludes taxes and subsidies on products.

(c) Tourism consumption is the total consumption made by a visitor or on behalf of a visitor for and during his/her trip and stay at the destination.

(d) Retail Trade, Australia (Cat. no. 8501.0).

(e) Consumer Price Index (Cat. no. 6401.0); base year: 1989-90=100.

(f) Australian National Accounts: Tourism Satellite Account (Cat. no. 5249.0). In full-time equivalent terms this was equal to 389,000 persons.

(g) Labour Force, Australia (Cat. no. 6203.0).

(h) Change is shown in terms of percentage points.

(i) Average Weekly Earnings, States and Australia (Cat. no. 6302.0).

(j) Balance of Payments and International Investment Position, Australia (Cat. no. 5302.0).

(k) Average Monthly Exchange Rates, Data Report (Cat. no. 5654.0.40.001).

IN BRIEF

EVENTS OF SEPTEMBER 2001 AND SEPTEMBER 2000

Care should be exercised when assessing movements between September 2000 and September 2001 due to the significant events which occurred in these months (the Olympic Games held in Sydney in September 2000 and the attacks on the United States and the demise of Ansett in September 2001).

The following table shows room nights occupied and room occupancy rates for these two months.

OCCUPANCY, SEPTEMBER 2000 AND SEPTEMBER 2001

	Room nights occupied			Room occupancy rate		
	September 2000 '000	September 2001 '000	% change	September 2000 '000	September 2001 '000	% point change
New South Wales	1 299.9	1 135.8	-12.6	66.8	57.9	-8.9
Victoria	514.1	522.7	1.7	55.0	54.0	-1.0
Queensland	969.9	1 011.3	4.3	61.8	64.1	2.3
South Australia	177.6	181.2	2.0	56.4	57.0	0.6
Western Australia	331.7	327.9	-1.1	58.0	57.4	-0.6
Tasmania	71.2	70.9	-0.4	43.4	43.7	0.3
Northern Territory	113.9	123.5	8.4	60.7	65.8	5.1
Australian Capital Territory	84.3	102.7	21.8	56.0	66.9	10.9
Australia	3 562.6	3 476	-2.4	61.0	58.9	-2.1

OVERSEAS ARRIVALS AND DEPARTURES DATA

The Department of Immigration, Multicultural and Indigenous Affairs (DIMIA) is currently automating the processing of passenger cards. Delays are being experienced in obtaining final Overseas Arrivals and Departures data commencing with the month of August 2000. Preliminary monthly data will continue to be available in *Overseas Arrivals and Departures, Australia* (Cat. no. 3401.0).

How delays affect this issue:

- limited short-term overseas visitor arrivals statistics are included — tables 28 and 29 only. Data for the months August 2000 to September 2001 are preliminary and subject to revision; and
- no departure statistics are provided.

Effect on future issues:

- Preliminary data will continue to be included in tables 28 and 29 until final data is available.

TOURISM SATELLITE ACCOUNT UPDATES

In response to demand for information on the economic impacts of tourism the ABS with support from the Department of Industry, Tourism and Resources (ITR, formerly the Department of Industry, Science and Resources) developed Australia's first Tourism Satellite Account (TSA) in respect of 1997–98.

In terms of future TSA work, the ABS intends to produce annual estimates of the key results with a full update possibly every three years. The 1998–99, 1999–2000 and 2000–2001 estimates are expected to be included in the December quarter 2001 issue of this publication. A complete update of the TSA for financial year 2000–2001 is planned for release in early 2004.

TOURISM'S INDIRECT ECONOMIC EFFECTS

The Bureau of Tourism Research (BTR) recently published a research paper estimating the indirect, or flow on, economic effects of tourism in 1997–98. While direct effects are solely concerned with the immediate effect of tourism expenditure by visitors, indirect economic contributions include the downstream effects of this expenditure. For example, when a visitor buys a meal, indirect tourism demand is generated for the food manufacturer, the transporter, the electricity company, etc., that provide the necessary inputs required to make the meal. The study evaluates the inter-industry linkages of tourism consumption in terms of generation of output, employment, value added and Gross Domestic Product (GDP).

Tourism GDP created indirectly is estimated to be \$23.5b for 1997–98. When the direct effect of \$25.2b is added, the tourism industry contributed \$48.7b or 8.6% of GDP in 1997–98.

The tourism industry was responsible for the creation of 853,500 jobs in 1997–98, accounting for 10% of national employment. Of this, 340,600 jobs (4% of employment) were created by the indirect impact of tourism demand.

Tourism gross value added, generated indirectly, amounted to \$22.9b in 1997–98. Together with direct tourism value added of \$22.4b, tourism value added was 8.7% of gross value added.

In 1997–98 tourism generated \$0.7b (1.6%) of aggregate net taxes on products through its indirect effects. Combined with the \$2.8b earned through the direct contribution of tourism, the total revenue from net taxes on products due to tourism was \$3.5b.

Imports generated through the indirect effects of tourism were \$3.5b or 3% of total imports in 1997–98. The value of direct tourism imports was \$2.9b, giving an aggregate of \$6.4b.

Copies of the research paper can be obtained from the BTR on Canberra 02 6213 6967.

BUSINESS OPERATIONS
AND INDUSTRY
PERFORMANCE

Business Operations and Industry Performance, Australia, 1999–2000 (Cat. no. 8140.0) contains data for employing businesses in the Accommodation, cafes and restaurants industry (as well as other industries).

Operating profit before tax (OPBT) for the Accommodation, cafes and restaurant industry was \$1,538m for 1999–2000. This was a decrease of 5% compared to the previous financial year.

The proportion of businesses making a profit increased for the third consecutive year and is now at 82.2%, up from 74.3% in 1998–99 and 17.1 percentage points above the proportion recorded in 1996–97 (65.1%).

INTERNET ACTIVITY

Internet Activity, Australia (Cat. no. 8153.0) presents a detailed analysis of Internet activity conducted through the Internet Service Provider (ISP) industry in Australia on a quarterly basis. Data is available at the Statistical Division (SD) level.

Of the 4.2 million Internet subscribers in Australia in the June quarter 2001, there were 3.7 million household subscribers and 508,000 business and government subscribers.

There was a wide distribution of ISPs across Australia with the highest concentration occurring in the capital city SDs. Capital city SDs accounted for 72% of access lines, 74% of subscribers and 82% of data downloaded.

CASINOS

At the end of June 2001, there were 13 casinos operating in Australia, employing a total of 20,413 persons, a slight decrease from the 20,497 persons employed at the end of June 2000. These casinos generated a total income of \$3,137m, an increase of 3% on the 1999–2000 figure. Takings from gambling contributed four-fifths (\$2,504m) of the total income. Takings from meals accounted for 6% of income (\$191m) and the sale of alcohol and other beverages accounted for 5% of income (\$149m). Takings from accommodation (\$133m or 4% of total income) recorded an increase of 12% compared to 1999–2000.

The casinos industry incurred total expenses of \$2,599m during 2000–01. Labour costs accounted for nearly one-third (\$842m) of total expenses. The average wage per employee was \$35,900, an increase of 3% on the 1999–2000 average wage (\$34,900).

The industry value added increased by 5% from \$1,564m in 1999–2000 to \$1,648m in 2000–01.

The operating profit before tax (\$537m) increased 19% on the 1999–2000 figure (\$452m).

For more information see *Casinos, Australia, 2000–01* (Cat. no. 8683.0).

FEATURE ARTICLE

COUNTS OF ACCOMMODATION ESTABLISHMENTS AND CAPACITY AT SEPTEMBER 2001

INTRODUCTION

Serviced apartments and cabins in caravan parks are the significant growth areas in the supply of tourist accommodation. This article presents the latest establishment and capacity counts. Comparisons between the capital cities and their respective State/Territory are also included.

The accommodation types covered include:

- Hotels, motels and guest houses with facilities and serviced apartment establishments with 5 or more rooms;
- Holiday flats, units and houses (other than those included with serviced apartments) which are operated by owners, managers or real estate agents who have sole letting rights to at least 5 flats, units or houses available for short-term letting;
- Caravan parks with powered sites and/or cabins; and
- Visitor hostels.

These counts are produced from a file supplied by the Australian Automobile Association (AAA) and data collected by the Survey of Tourist Accommodation (STA).

The counts provide a snapshot of total accommodation supply and can be used to:

- show the proportion of total accommodation measured by the STA in the States, Territories and Tourism Regions;
- determine which accommodation types and geographic areas are experiencing growth; and
- estimate the impact of smaller establishments upon accommodation activity in specific areas.

The STA collects statistics about holiday flats and units, caravan parks and visitor hostels for one year out of every three. These counts provide an update for these accommodation types.

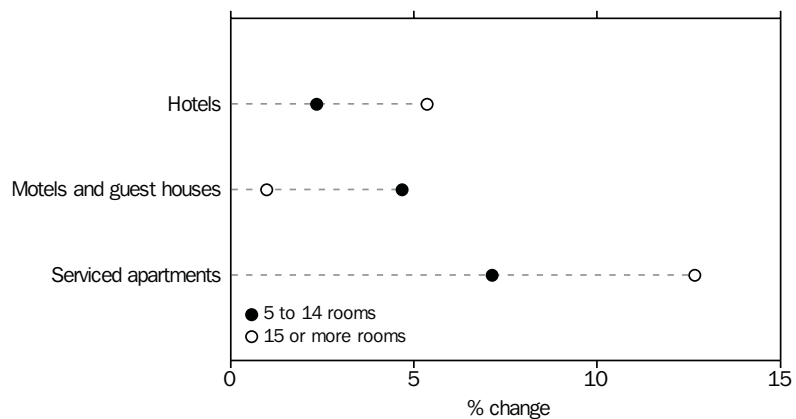
HOTELS, MOTELS, GUEST HOUSES AND SERVICED APARTMENTS

Overview The capacity of accommodation establishments in Australian capital cities is predominantly provided by 'large' establishments (those with 15 or more rooms). This applies to all accommodation types. The same pattern is evident outside capital cities but there is some variability across the States.

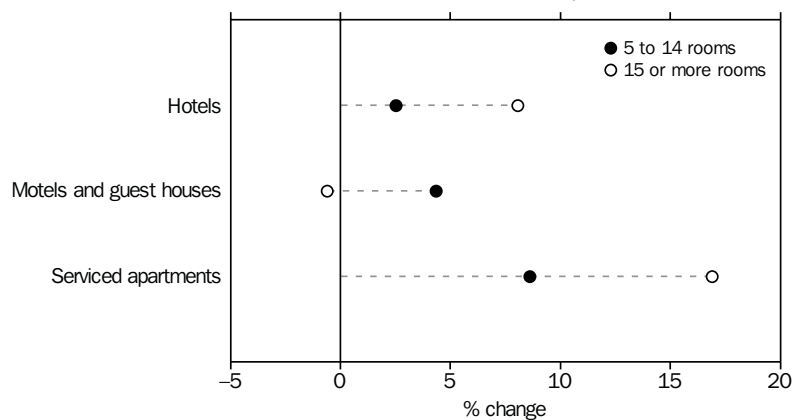
The number of hotels, motels, guest houses and serviced apartments increased 4% between December 1999 and September 2001. The number of 'small' establishments (those with between 5 and 14 rooms), outpaced growth in the number of 'large' establishments but the latter recorded stronger growth in capacity. The growth in the number of small establishments was driven by a 5% increase in 'small' motels.

Large serviced apartments recorded the biggest increase, a 12% increase in establishments and 17% increase in capacity. By contrast the number and capacity of small motels increased (up 5% and 4% respectively) while the capacity of motels with more than 15 rooms decreased 1%.

F1.1 GROWTH IN ESTABLISHMENTS—December 1999 to September 2001



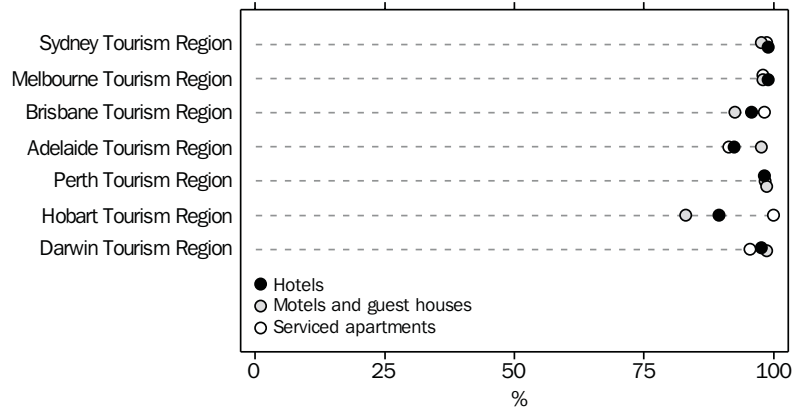
F1.2 GROWTH IN GUEST ROOMS—December 1999 to September 2001



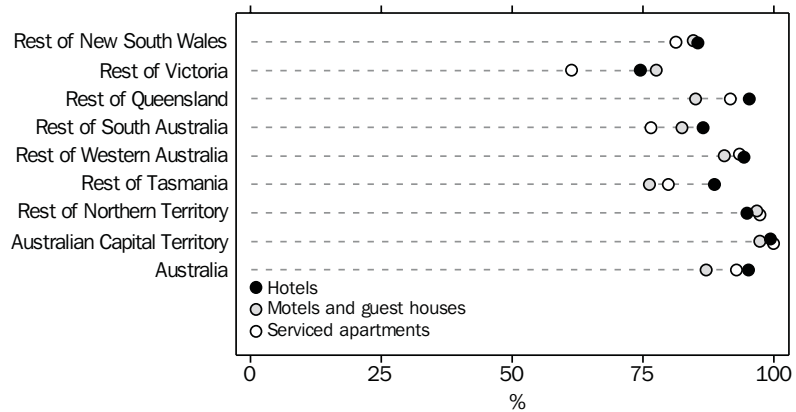
Most guest rooms in hotels, motels, guest houses and serviced apartments were concentrated in the capital cities.

In September 2001, large establishments accounted for 95% of guest rooms in hotels, 87% of guest rooms in motels and guest houses and 93% of guest rooms in serviced apartments.

F1.3 PROPORTION OF TOTAL CAPACITY, establishments with 15 or more rooms



F1.4 PROPORTION OF TOTAL CAPACITY, establishments with 15 or more rooms



Licensed hotels with facilities

Large establishments provided most of the guest rooms in licensed hotels with facilities in September 2001. Large hotels accounted for 99% of available accommodation capacity in Sydney and Melbourne and at least 90% of capacity in every other capital city (see graph F1.3).

Large hotels provided a slightly smaller proportion of total capacity outside the capital cities. The 'rest of Victoria' showed the lowest proportion of capacity provided by large hotels (75%).

Motels and guest houses Motels and guest houses showed a similar pattern to hotels, with most guest rooms provided by establishments with 15 or more rooms. The proportion of capacity provided by the larger motels and guest houses was comparatively low in Victoria and Tasmania outside the capital cities, but still accounted for 78% and 76% of total guest rooms in September 2001, respectively.

Tasmania had the smallest proportion of large motels and guest houses in September 2001. Just over half the motels and guest houses in Hobart had 15 or more rooms while 42% of motels and guest houses in the rest of Tasmania were this size (see table F1.5).

F1.5 HOTELS, MOTELS AND GUEST HOUSES — SEPTEMBER 2001

	<i>Licensed hotels with facilities</i>					<i>Motels and guest houses</i>				
	<i>With 5-14 rooms</i>		<i>With 15 or more rooms</i>		Total	<i>With 5-14 rooms</i>		<i>With 15 or more rooms</i>		Total
	no.	% of total	no.	% of total		no.	% of total	no.	% of total	
Sydney Tourism Region										
Establishments	25	18.4	111	81.6	136	17	11.8	127	88.2	144
Guest rooms	225	1.1	20 938	98.9	21 163	188	2.3	7 853	97.7	8 041
Rest of New South Wales										
Establishments	77	44.5	96	55.5	173	450	33.9	879	66.1	1 329
Guest rooms	730	14.5	4 299	85.5	5 029	4 632	15.4	25 388	84.6	30 020
Melbourne Tourism Region										
Establishments	11	13.9	68	86.1	79	9	7.8	106	92.2	115
Guest rooms	103	1.0	10 367	99.0	10 470	98	2.0	4 781	98.0	4 879
Rest of Victoria										
Establishments	80	53.7	69	46.3	149	315	44.0	401	56.0	716
Guest rooms	711	25.5	2 079	74.5	2 790	3 256	22.5	11 186	77.5	14 442
Brisbane Tourism Region										
Establishments	16	37.2	27	62.8	43	33	25.8	95	74.2	128
Guest rooms	161	4.2	3 707	95.8	3 868	303	7.5	3 736	92.5	4 039
Rest of Queensland										
Establishments	93	38.6	148	61.4	241	261	37.9	428	62.1	689
Guest rooms	856	4.7	17 275	95.3	18 131	2 624	14.9	14 950	85.1	17 574
Adelaide Tourism Region										
Establishments	22	51.2	21	48.8	43	5	8.9	51	91.1	56
Guest rooms	211	7.6	2 569	92.4	2 780	59	2.4	2 389	97.6	2 448
Rest of South Australia										
Establishments	29	40.8	42	59.2	71	64	40.0	96	60.0	160
Guest rooms	248	13.5	1 584	86.5	1 832	612	17.6	2 859	82.4	3 471
Perth Tourism Region										
Establishments	10	18.9	43	81.1	53	3	8.8	31	91.2	34
Guest rooms	104	1.8	5 737	98.2	5 841	25	1.4	1 781	98.6	1 806
Rest of Western Australia										
Establishments	24	21.1	90	78.9	114	45	32.1	95	67.9	140
Guest rooms	241	5.7	4 014	94.3	4 255	400	9.4	3 845	90.6	4 245
Hobart Tourism Region										
Establishments	13	54.2	11	45.8	24	18	48.6	19	51.4	37
Guest rooms	124	10.5	1 060	89.5	1 184	135	16.9	663	83.1	798
Rest of Tasmania										
Establishments	26	37.7	43	62.3	69	45	58.4	32	41.6	77
Guest rooms	236	11.3	1 858	88.7	2 094	343	23.8	1 101	76.2	1 444
Darwin Tourism Region										
Establishments	2	16.7	10	83.3	12	1	6.7	14	93.3	15
Guest rooms	21	2.3	876	97.7	897	14	1.4	954	98.6	968
Rest of Northern Territory										
Establishments	6	31.6	13	68.4	19	8	18.2	36	81.8	44
Guest rooms	57	5.1	1 067	94.9	1 124	77	3.3	2 225	96.7	2 302
Australian Capital Territory										
Establishments	1	6.3	15	93.8	16	4	12.9	27	87.1	31
Guest rooms	11	0.6	1 906	99.4	1 917	48	2.6	1 802	97.4	1 850
Australia										
Establishments	435	35.0	807	65.0	1 242	1 278	34.4	2 437	65.6	3 715
Guest rooms	4 039	4.8	79 336	95.2	83 375	12 814	13.0	85 513	87.0	98 327

Serviced apartments Most rooms available in serviced apartments were provided by large establishments. In September 2001 Victoria, excluding Melbourne, had the lowest proportion of guest rooms offered by establishments with 15 or more rooms (61%).

F1.6 SERVICED APARTMENTS — SEPTEMBER 2001

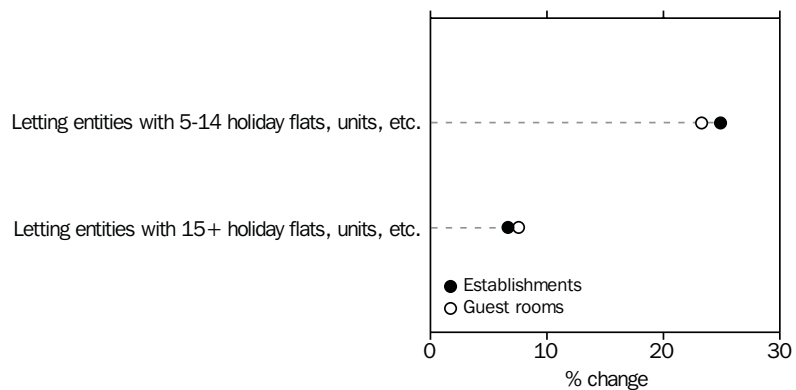
	<i>With 5–14 rooms</i>		<i>With 15 or more rooms</i>		<i>Total</i>
	<i>no.</i>	<i>% of total</i>	<i>no.</i>	<i>% of total</i>	
Sydney Tourism Region					
Establishments	8	11.0	65	89.0	73
Guest rooms	74	1.4	5 197	98.6	5 271
Rest of New South Wales					
Establishments	80	51.6	75	48.4	155
Guest rooms	685	18.7	2 981	81.3	3 666
Melbourne Tourism Region					
Establishments	8	10.4	69	89.6	77
Guest rooms	90	2.1	4 179	97.9	4 269
Rest of Victoria					
Establishments	35	68.6	16	31.4	51
Guest rooms	300	38.7	475	61.3	775
Brisbane Tourism Region					
Establishments	5	9.6	47	90.4	52
Guest rooms	49	1.8	2 638	98.2	2 687
Rest of Queensland					
Establishments	102	29.9	239	70.1	341
Guest rooms	1 032	8.3	11 379	91.7	12 411
Adelaide Tourism Region					
Establishments	8	32.0	17	68.0	25
Guest rooms	87	8.7	917	91.3	1 004
Rest of South Australia					
Establishments	14	53.8	12	46.2	26
Guest rooms	126	23.5	410	76.5	536
Perth Tourism Region					
Establishments	4	12.1	29	87.9	33
Guest rooms	31	1.6	1 912	98.4	1 943
Rest of Western Australia					
Establishments	16	26.7	44	73.3	60
Guest rooms	150	6.6	2 131	93.4	2 281
Hobart Tourism Region					
Establishments	—	—	8	100.0	8
Guest rooms	—	—	425	100.0	425
Rest of Tasmania					
Establishments	16	47.1	18	52.9	34
Guest rooms	128	20.1	510	79.9	638
Darwin Tourism Region					
Establishments	3	23.1	10	76.9	13
Guest rooms	36	4.5	769	95.5	805
Rest of Northern Territory					
Establishments	1	12.5	7	87.5	8
Guest rooms	10	2.6	382	97.4	392
Australian Capital Territory					
Establishments	—	—	20	100.0	20
Guest rooms	—	—	1 522	100.0	1 522
Australia					
Establishments	300	30.7	676	69.3	976
Guest rooms	2 798	7.2	35 827	92.8	38 625

Holiday flats, units and houses

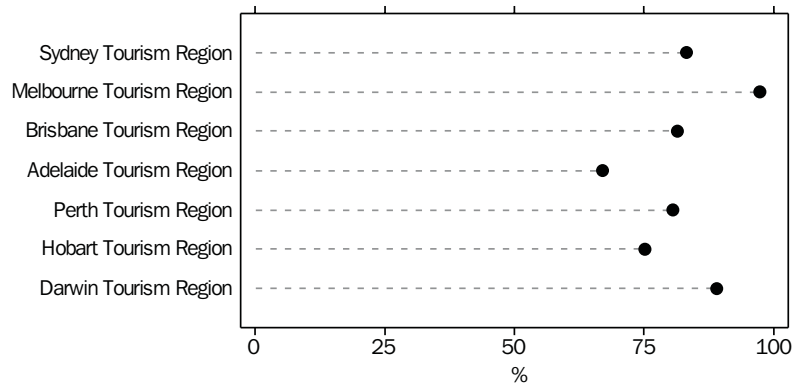
Between December 1999 and September 2001 the number of holiday flats and units increased by 17% with an 11% increase in capacity.

Almost 80% of holiday flats, units and houses in September 2001 were available through the letting entities who have sole letting rights to at least 15 flats, units or houses. The exceptions were Western Australia (excluding Perth) and Tasmania (excluding Hobart), where less than half the holiday flats, units and houses were available through the larger letting entities (46% and 37% respectively). See graphs F1.8 and F1.9.

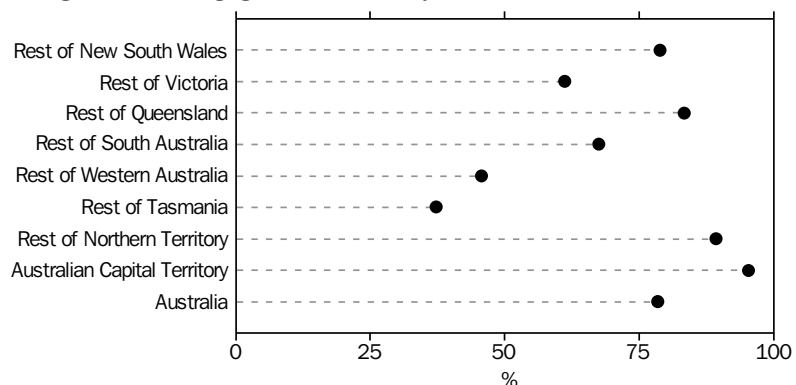
F1.7 GROWTH IN ESTABLISHMENTS AND CAPACITY, Holiday flats and units—December 1999 to September 2001



F1.8 PROPORTION OF TOTAL CAPACITY, Holiday flats, units and houses let through entities managing 15 or more holiday flats, units or houses



F1.9 PROPORTION OF TOTAL CAPACITY, Holiday flats, units and houses let through entities managing 15 or more holiday flats, units or houses

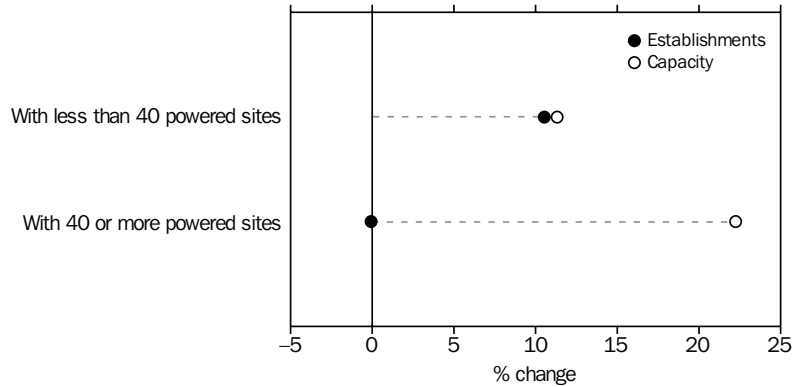


F1.10 HOLIDAY FLATS, UNITS AND HOUSES — SEPTEMBER 2001

	<i>Letting entities</i>				
	<i>With 5–14 holiday flats, units, etc.</i>		<i>With 15 or more holiday flats, units, etc.</i>		Total
	no.	% of total	no.	% of total	
Sydney Tourism Region					
Letting entities	15	51.7	14	48.3	29
Flats, units and houses	129	16.8	639	83.2	768
Rest of New South Wales					
Letting entities	276	64.8	150	35.2	426
Flats, units and houses	2 199	21.1	8 220	78.9	10 419
Melbourne Tourism Region					
Letting entities	2	33.3	4	66.7	6
Flats, units and houses	14	2.6	528	97.4	542
Rest of Victoria					
Letting entities	154	83.7	30	16.3	184
Flats, units and houses	1 148	38.9	1 803	61.1	2 951
Brisbane Tourism Region					
Letting entities	26	55.3	21	44.7	47
Flats, units and houses	210	18.6	922	81.4	1 132
Rest of Queensland					
Letting entities	376	48.5	399	51.5	775
Flats, units and houses	3 058	16.6	15 392	83.4	18 450
Adelaide Tourism Region					
Letting entities	25	71.4	10	28.6	35
Flats, units and houses	177	33.0	360	67.0	537
Rest of South Australia					
Letting entities	41	80.4	10	19.6	51
Flats, units and houses	304	32.5	631	67.5	935
Perth Tourism Region					
Letting entities	17	60.7	11	39.3	28
Flats, units and houses	173	19.4	717	80.6	890
Rest of Western Australia					
Letting entities	73	81.1	17	18.9	90
Flats, units and houses	614	54.3	516	45.7	1 130
Hobart Tourism Region					
Letting entities	4	50.0	4	50.0	8
Flats, units and houses	30	24.8	91	75.2	121
Rest of Tasmania					
Letting entities	29	80.6	7	19.4	36
Flats, units and houses	228	62.8	135	37.2	363
Darwin Tourism Region					
Letting entities	2	40.0	3	60.0	5
Flats, units and houses	16	11.0	129	89.0	145
Rest of Northern Territory					
Letting entities	1	50.0	1	50.0	2
Flats, units and houses	8	10.7	67	89.3	75
Australian Capital Territory					
Letting entities	1	16.7	5	83.3	6
Flats, units and houses	12	4.7	241	95.3	253
Australia					
Letting entities	1 042	60.3	686	39.7	1 728
Flats, units and houses	8 320	21.5	30 391	78.5	38 711

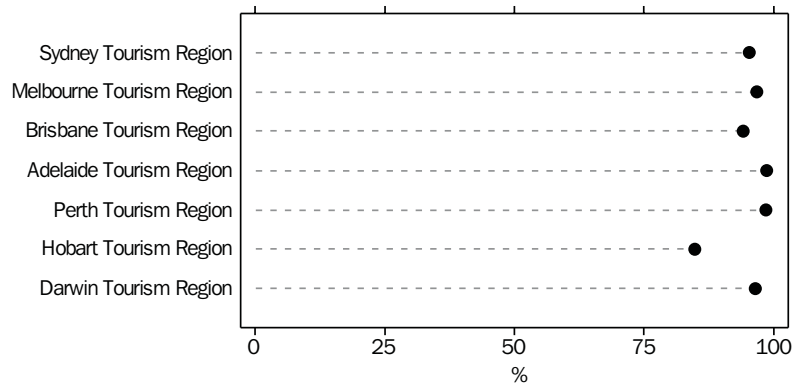
Caravan parks Over the period December 1999 to September 2001 total caravan park capacity increased 21%. Growth in capacity for caravan parks with more than 40 powered sites was nearly double the growth in the capacity of smaller parks (see graph F1.11). Almost 92% of powered sites and cabins are provided by the larger caravan parks.

F1.11 GROWTH IN ESTABLISHMENTS AND CAPACITY, Caravan parks—
December 1999 to September 2001

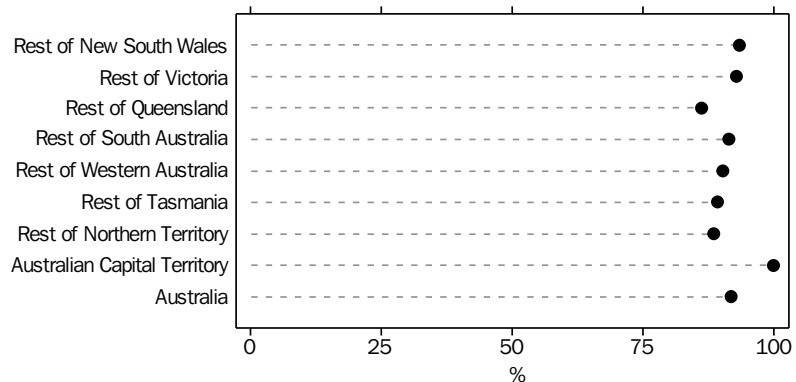


New South Wales had the largest number of caravan parks (811 or 30%) in September 2001 and the greatest capacity, providing 89,465 (33%) of all powered sites and cabins.

F1.12 PROPORTION OF TOTAL CAPACITY,
Caravan parks with 40 or more powered sites



F1.13 PROPORTION OF TOTAL CAPACITY,
Caravan parks with 40 or more powered sites

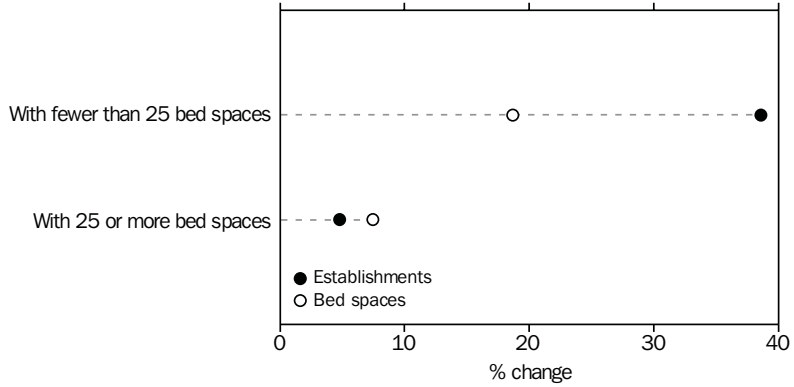


F1.14 CARAVAN PARKS — SEPTEMBER 2001

	<i>With fewer than 40 powered sites</i>		<i>With 40 or more powered sites</i>		<i>Total</i>
	<i>no.</i>	<i>% of total</i>	<i>no.</i>	<i>% of total</i>	
Sydney Tourism Region					
Establishments	9	20.5	35	79.5	44
Powered sites and cabins	227	4.7	4 595	95.3	4 822
Rest of New South Wales					
Establishments	230	30.0	537	70.0	767
Powered sites and cabins	5 603	6.6	79 040	93.4	84 643
Melbourne Tourism Region					
Establishments	4	13.8	25	86.2	29
Powered sites and cabins	103	3.3	3 033	96.7	3 136
Rest of Victoria					
Establishments	163	28.9	401	71.1	564
Powered sites and cabins	4 230	7.1	55 645	92.9	59 875
Brisbane Tourism Region					
Establishments	21	25.6	61	74.4	82
Powered sites and cabins	527	5.8	8 552	94.2	9 079
Rest of Queensland					
Establishments	229	42.6	309	57.4	538
Powered sites and cabins	5 508	13.8	34 509	86.2	40 017
Adelaide Tourism Region					
Establishments	1	5.3	18	94.7	19
Powered sites and cabins	37	1.4	2 693	98.6	2 730
Rest of South Australia					
Establishments	68	33.8	133	66.2	201
Powered sites and cabins	1 658	8.6	17 704	91.4	19 362
Perth Tourism Region					
Establishments	2	6.3	30	93.8	32
Powered sites and cabins	57	1.5	3 837	98.5	3 894
Rest of Western Australia					
Establishments	111	38.3	179	61.7	290
Powered sites and cabins	2 411	9.7	22 432	90.3	24 843
Hobart Tourism Region					
Establishments	4	44.4	5	55.6	9
Powered sites and cabins	99	15.2	554	84.8	653
Rest of Tasmania					
Establishments	26	40.0	39	60.0	65
Powered sites and cabins	583	10.7	4 877	89.3	5 460
Darwin Tourism Region					
Establishments	4	17.4	19	82.6	23
Powered sites and cabins	103	3.5	2 846	96.5	2 949
Rest of Northern Territory					
Establishments	30	49.2	31	50.8	61
Powered sites and cabins	708	11.5	5 434	88.5	6 142
Australian Capital Territory					
Establishments	—	—	4	100.0	4
Powered sites and cabins	—	—	1 014	100.0	1 014
Australia					
Establishments	902	33.1	1 826	66.9	2 728
Powered sites and cabins	21 854	8.1	246 765	91.9	268 619

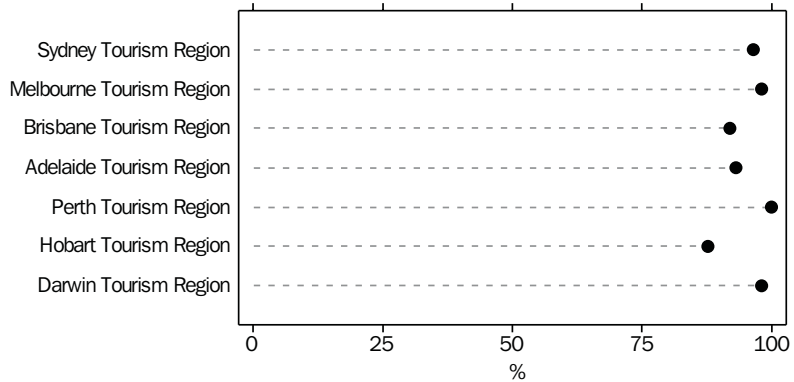
Visitor hostels Large visitor hostels (those with 25 or more bed spaces) provided 93% of bed spaces available in visitor hostels in Australia in September 2001. This compares to 93.6% in December 1999. The slight decrease is attributable to a 7% increase in capacity of large visitor hostels compared to a 19% increase for other hostels (see graph F1.15).

F1.15 GROWTH IN ESTABLISHMENTS AND CAPACITY, Visitor hostels—December 1999 to September 2001

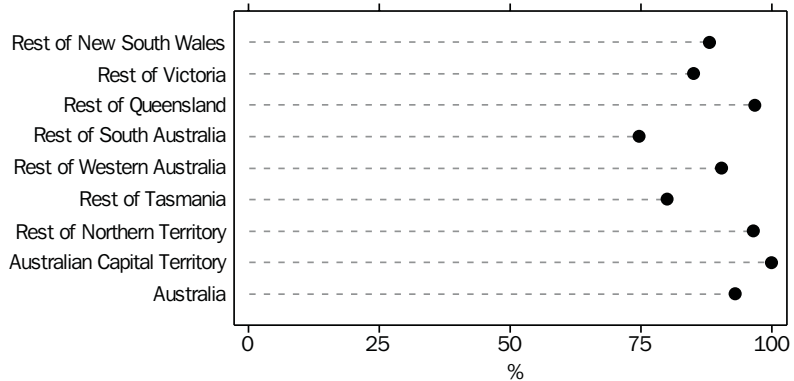


In September 2001, there were 738 visitor hostels across Australia, with 45,979 bed spaces, an average of 62 beds per hostel.

F1.16 PROPORTION OF TOTAL CAPACITY, Visitor hostels with 25 or more bed spaces



F1.17 PROPORTION OF TOTAL CAPACITY, Visitor hostels with 25 or more bed spaces



F1.18 VISITOR HOSTELS — SEPTEMBER 2001

	<i>With fewer than 25 bed spaces</i>		<i>With 25 or more bed spaces</i>		<i>Total</i>
	<i>no.</i>	<i>% of total</i>	<i>no.</i>	<i>% of total</i>	
Sydney Tourism Region					
Establishments	15	20.0	60	80.0	75
Bed spaces	230	3.5	6 366	96.5	6 596
Rest of New South Wales					
Establishments	40	44.4	50	55.6	90
Bed spaces	517	11.9	3 833	88.1	4 350
Melbourne Tourism Region					
Establishments	4	12.9	27	87.1	31
Bed spaces	55	1.9	2 911	98.1	2 966
Rest of Victoria					
Establishments	50	53.2	44	46.8	94
Bed spaces	632	14.9	3 613	85.1	4 245
Brisbane Tourism Region					
Establishments	13	40.6	19	59.4	32
Bed spaces	157	8.1	1 775	91.9	1 932
Rest of Queensland					
Establishments	32	18.9	137	81.1	169
Bed spaces	400	3.3	11 729	96.7	12 129
Adelaide Tourism Region					
Establishments	6	31.6	13	68.4	19
Bed spaces	66	6.9	888	93.1	954
Rest of South Australia					
Establishments	28	65.1	15	34.9	43
Bed spaces	375	25.3	1 106	74.7	1 481
Perth Tourism Region					
Establishments	—	—	31	100.0	31
Bed spaces	—	—	2 117	100.0	2 117
Rest of Western Australia					
Establishments	18	30.0	42	70.0	60
Bed spaces	279	9.6	2 614	90.4	2 893
Hobart Tourism Region					
Establishments	4	33.3	8	66.7	12
Bed spaces	86	12.3	615	87.7	701
Rest of Tasmania					
Establishments	21	50.0	21	50.0	42
Bed spaces	327	20.0	1 309	80.0	1 636
Darwin Tourism Region					
Establishments	2	18.2	9	81.8	11
Bed spaces	26	1.9	1 323	98.1	1 349
Rest of Northern Territory					
Establishments	4	16.7	20	83.3	24
Bed spaces	65	3.5	1 816	96.5	1 881
Australian Capital Territory					
Establishments	—	—	5	100.0	5
Bed spaces	—	—	749	100.0	749
Australia					
Establishments	237	32.1	501	67.9	738
Bed spaces	3 215	7.0	42 764	93.0	45 979

Information on the number and capacity of tourist accommodation establishments for specific Tourism Regions is available on request. Please contact Neil McKellar-Stewart on Queensland 07 3222 6364 for more information.

FEATURE ARTICLE

BUSINESS EXPECTATIONS — MAJOR TOURISM RELATED INDUSTRIES

INTRODUCTION

The Retail trade, Accommodation, cafes and restaurants, and Transport, storage and communications industries together account for 59% of tourism value added according to the 1997–98 tourism satellite account. Tourism gross value added as a proportion of total gross value added was 11% for Retail trade, 36% for Accommodation, cafes and restaurants, 13% for Transport, storage and communication services. The short term business expectations of each of these industries are in most instances better than 12 months ago according to the March quarter 2002 issue of *Australian Business Expectations* (Cat. no. 5250.0).

The estimates are based on the business expectations of senior executives, managers and proprietors of businesses operating in Australia, during October and November 2001 (i.e. after the terrorist attacks on the United States and the demise of Ansett). Approximately 1,200 tourism related businesses were included in the survey.

SHORT TERM OUTLOOK — MARCH QUARTER 2002

All industries In original terms, Operating income, Profit and Employment in industry as a whole are expected to decrease by 3.0%, 26.3% and 0.8% respectively in the March quarter 2002 compared to the December quarter 2001. In trend terms these key indicators are also showing decreases.

F2.1 EXPECTED AGGREGATE CHANGE OVER THE PREVIOUS QUARTER

	Mar Qtr 2001	Jun Qtr 2001	Sep Qtr 2001	Dec Qtr 2001	Mar Qtr 2002
	%	%	%	%	%
ORIGINAL					
Operating income	-3.0	-0.2	-1.2	1.3	-3.0
Profit	-28.6	-5.5	-3.1	8.9	-26.3
Employment (full time equivalent)	-1.3	-1.0	-1.5	-1.2	-0.8
TREND					
Operating income	-0.8	-1.0	-0.8	-0.6	-0.6
Profit	-11.7	-9.4	-4.8	-4.1	-7.4
Employment (full time equivalent)	-0.9	-1.2	-1.3	-1.2	-0.9

Source: *Australian Business Expectations, Mar and Dec 2002*

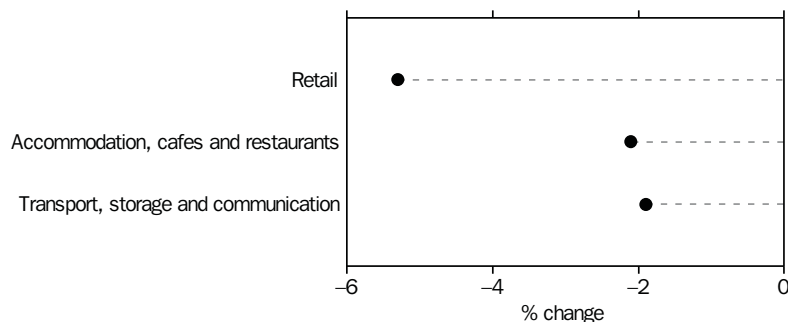
Of all businesses, those in Queensland are expecting the largest decreases in Operating income (-3.8%) and Profit (-38.9%). Employment in South Australia is expected to decrease by 1.7%, a larger expected fall than in other States. In contrast, businesses in Tasmania expect Operating income and Employment to grow by 0.1% and 0.2% respectively and Profit to fall by a much smaller margin than the other States.

Major tourism related industries

Operating income

Businesses in the three major tourism related industries are expecting Operating income to decrease in the March quarter 2002. Businesses in the Retail industry are expecting the largest decrease (5.3%). The Operating income expectations of businesses in the Retail and Accommodation, cafes and restaurants industries are an improvement on the March quarter 2001.

F2.2 OPERATING INCOME EXPECTATIONS, March quarter 2002 compared to December quarter 2001



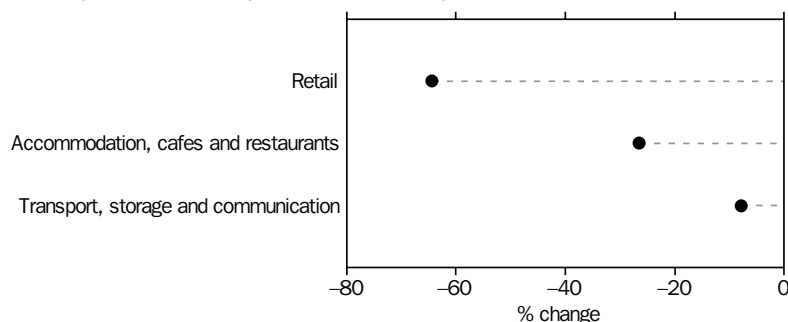
Source: Australian Business Expectations, March Quarter 2002 and December Quarter 2001 (Cat. no. 5250.0).

Profit

The recent outlook has been pessimistic for businesses in the Retail and Accommodation, cafes and restaurants industries, apart from the December quarter 2001, when an increase in profit was expected. The March quarter 2002 data show that businesses in these industries are expecting profit to decrease by 64.4% and 26.6% respectively. In the previous year, these industries expected larger falls in profit for the March quarter 2001, with Retail expected to be down 74.0% and profit for the Accommodation, cafes and restaurants industry expected to decline 36.3%.

Businesses in the Transport, storage and communication industry expect Profit to decrease by 7.9% in the March quarter 2002. This is a smaller decrease than expected in the March quarter 2001 (18.8%).

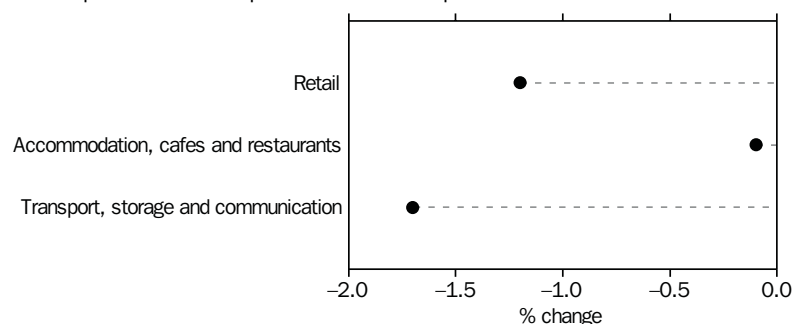
F2.3 PROFIT EXPECTATIONS, March quarter 2002 compared to December quarter 2001



Source: Australian Business Expectations, March Quarter 2002 and December Quarter 2001 (Cat. no. 5250.0).

Employment Businesses in these industries are expecting full time equivalent employment to decrease in the March quarter 2002. Of all businesses, those in the Accommodation, cafes and restaurants industry are expecting the smallest decrease (0.1%). Businesses in the Transport, storage and communication industries are expecting the largest decrease (1.7%). This is the sixteenth consecutive quarter that businesses in this industry have expected a decrease.

F2.4 EMPLOYMENT EXPECTATIONS,
March quarter 2002 compared to December quarter 2001



Source: Australian Business Expectations, March Quarter 2002 and December Quarter 2002 (Cat. no. 5250.0).

MEDIUM TERM OUTLOOK — DECEMBER QUARTER 2002

All industries In original terms, Operating income and Profit are expected to increase by 1.5% and 8.1% respectively in the December quarter 2002. Employment is expected to decrease by 0.1%.

F2.5 EXPECTED AGGREGATE CHANGE OVER THE SAME QUARTER OF THE PREVIOUS YEAR

	Dec Qtr 2001	Mar Qtr 2002	Jun Qtr 2002	Sep Qtr 2002	Dec Qtr 2002
	%	%	%	%	%
ORIGINAL					
Operating income	1.5	1.7	0.4	0.9	1.5
Profit	-1.1	6.7	9.4	7.9	8.1
Employment (full time equivalent)	-0.1	-0.4	-1.8	-0.7	-0.1
TREND					
Operating income	1.6	1.3	0.9	0.9	1.2
Profit	4.8	5.3	6.6	8.6	10.7
Employment (full time equivalent)	-0.3	-0.7	-1.0	-0.9	-0.6

Source: Australian Business Expectations, Mar and Dec 2002

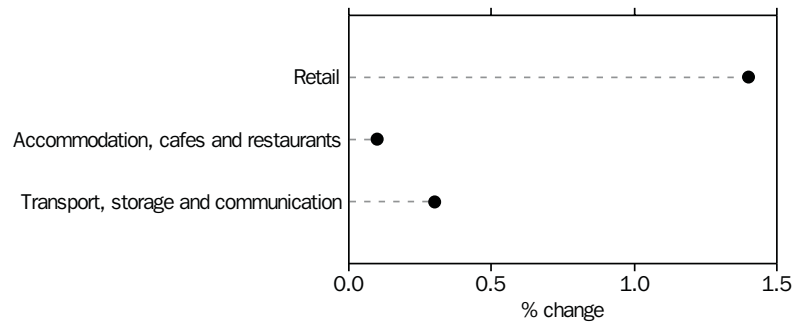
Of all businesses, those in Western Australia are expecting the largest increase in Operating income (2.6%) and those in New South Wales are expecting the largest increase in Profit (22.9%). Employment in Victoria is expected to decrease by 1%, a larger expected fall than in other States. New South Wales, Western Australia and Tasmania are expecting Employment to grow in the December quarter 2002.

Major tourism related industries

Operating income

Operating income in the Retail industry is expected to grow by 1.4% while smaller increases are expected by businesses in the other tourism related industries.

F2.6 OPERATING INCOME EXPECTATIONS, December quarter 2002 compared to December quarter 2001

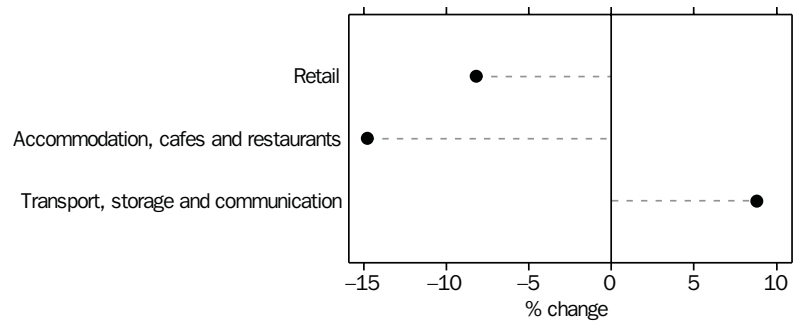


Source: Australian Business Expectations, March Quarter 2002 and December Quarter 2002 (Cat. no. 5250.0).

Profit

Businesses in the Transport, storage and communication industry are expecting Profit to increase by 8.8% in the December quarter 2002. The medium term Profit expectation for the Accommodation, cafes and restaurants industry is the lowest expectation for that industry since the commencement of the series in September quarter 1994.

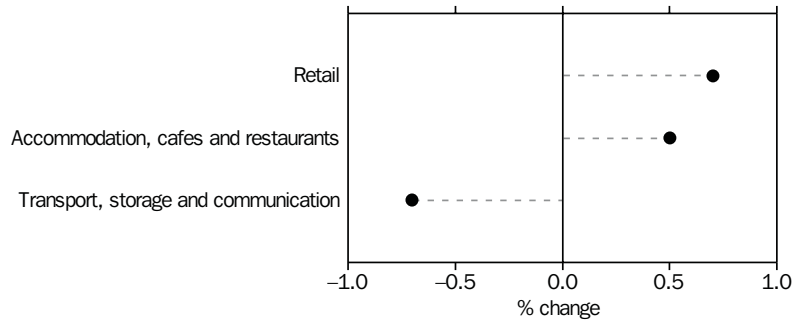
F2.7 PROFIT EXPECTATIONS, December quarter 2002 compared to December quarter 2001



Source: Australian Business Expectations, March Quarter 2002 and December Quarter 2002 (Cat. no. 5250.0).

Employment Businesses in the Retail and Accommodation, cafes and restaurants industries are showing an increase in Employment in the December quarter 2002. Businesses in the Transport, storage and communication industry are expecting a 0.7% decrease.

F2.8 EMPLOYMENT EXPECTATIONS,
December quarter 2002 compared to December quarter 2001



Source: *Australian Business Expectations, March Quarter 2002 and December Quarter 2002* (Cat. no. 5250.0).

CONCLUSION

Businesses in tourism related industries are expecting falls in key business indicators in the short term but in most cases these results present an improved outlook compared to their expectations of 12 months ago. In the medium term these businesses expect Operating Income to increase but Profit to fall in both the Retail and Accommodation, cafes and restaurants industries. For the latter Profit expectations are the lowest since 1994.

For more information see *Australian Business Expectations, March quarter 2002 and December quarter 2002* (Cat. no. 5250.0).

LIST OF TABLES

Page

TOURIST ACCOMMODATION

Australia	1	Hotels, motels, guest houses and serviced apartments, time series	30
	2	Accommodation establishments, September quarter 2000 and September quarter 2001	31
	3	Takings, accommodation establishments, September quarter 2000 and September quarter 2001	32
New South Wales	4	Hotels, motels, guest houses and serviced apartments, time series	34
	5	Accommodation establishments, September quarter 2000 and September quarter 2001	35
	6	Takings, accommodation establishments, September quarter 2000 and September quarter 2001	36
Victoria	7	Hotels, motels, guest houses and serviced apartments, time series	38
	8	Accommodation establishments, September quarter 2000 and September quarter 2001	39
	9	Takings, accommodation establishments, September quarter 2000 and September quarter 2001	40
Queensland	10	Hotels, motels, guest houses and serviced apartments, time series	42
	11	Accommodation establishments, September quarter 2000 and September quarter 2001	43
	12	Takings, accommodation establishments, September quarter 2000 and September quarter 2001	44
South Australia	13	Hotels, motels, guest houses and serviced apartments, time series	46
	14	Accommodation establishments, September quarter 2000 and September quarter 2001	47
	15	Takings, accommodation establishments, September quarter 2000 and September quarter 2001	48
Western Australia	16	Hotels, motels, guest houses and serviced apartments, time series	50
	17	Accommodation establishments, September quarter 2000 and September quarter 2001	51
	18	Takings, accommodation establishments, September quarter 2000 and September quarter 2001	52
Tasmania	19	Hotels, motels, guest houses and serviced apartments, time series	54
	20	Accommodation establishments, September quarter 2000 and September quarter 2001	55
	21	Takings, accommodation establishments, September quarter 2000 and September quarter 2001	56

Northern Territory	22	Hotels, motels, guest houses and serviced apartments, time series	58
	23	Accommodation establishments, September quarter 2000 and September quarter 2001	59
	24	Takings, accommodation establishments, September quarter 2000 and September quarter 2001	60
Australian Capital Territory	25	Hotels, motels, guest houses and serviced apartments, time series	62
	26	Accommodation establishments, September quarter 2000 and September quarter 2001	63
	27	Takings, accommodation establishments, September quarter 2000 and September quarter 2001	64
INTERNATIONAL TOURISM			
Short-term overseas visitors	28	Arrivals, by country of residence	67
	29	Arrivals by country of residence, original, seasonally adjusted and trend, October 2000 to September 2001	68

TOURIST ACCOMMODATION

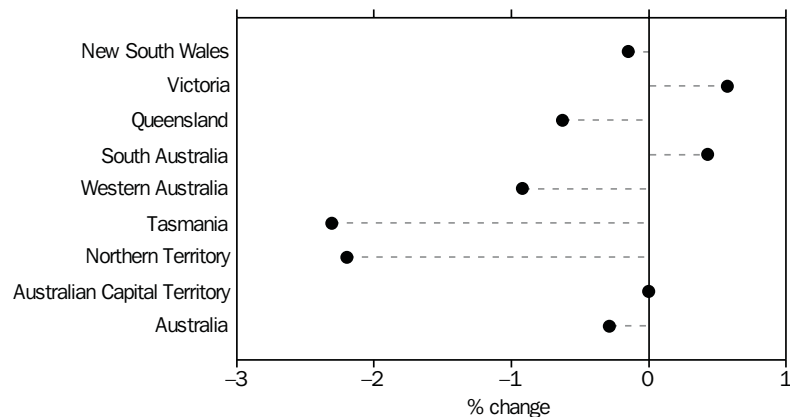
INTRODUCTION

The statistics presented in this section are from the quarterly Survey of Tourist Accommodation (STA). The data presented are for hotels, motels, guest houses and serviced apartments with 15 or more rooms or units.

AUSTRALIA

Establishments The number of accommodation establishments fell marginally in the September quarter 2001 compared to the September quarter 2000, driven by a decrease in the number of motels and guest houses, which declined for the fourth successive quarter. Victoria and South Australia were the only two States to record increases in the number of establishments.

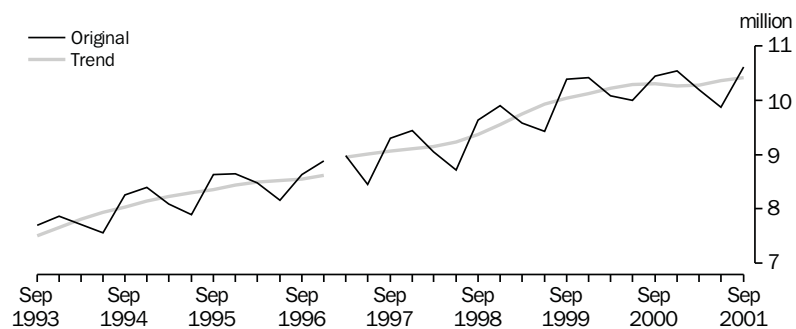
NUMBER OF ESTABLISHMENTS—Sep qtr 2000–Sep qtr 2001



Guest rooms The number of guest rooms increased 1% in the 12 months to September 2001, to 196,729. Guest rooms in serviced apartments (up 3%) and licensed hotels (up 2%) accounted for all of this increase. The number of rooms in motels and guest houses fell for the fifth successive quarter.

Room nights occupied Room nights occupied increased 1% in trend terms and 2% in both original and seasonally adjusted terms, compared to the September quarter 2000.

QUARTERLY ROOM NIGHTS OCCUPIED, Australia

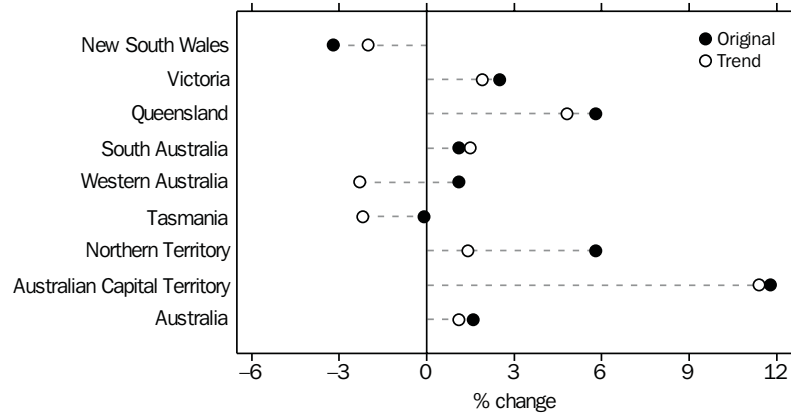


Notes: There is a break in series between December quarter 1996 and March quarter 1997 because of scope changes to STA. Refer to Explanatory Notes, paragraphs 3 to 7.

Room nights occupied
continued

The Australian Capital Territory showed the strongest growth in room nights occupied in the September quarter 2001 compared to the September quarter 2000, up 12% in original terms and 11% in trend terms. New South Wales and Tasmania were the only States to record falls in room nights occupied in both original and trend terms.

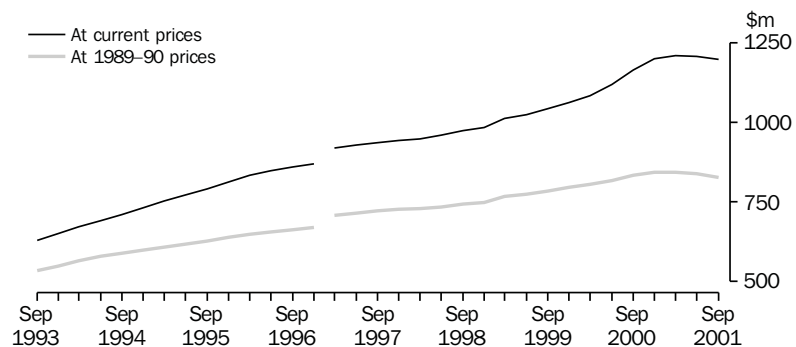
QUARTERLY ROOM NIGHTS OCCUPIED—Sep qtr 2000—Sep qtr 2001



Takings from accommodation

The trend estimate for accommodation takings increased 3% at current prices, but fell 1% at constant prices, compared to the September quarter 2000.

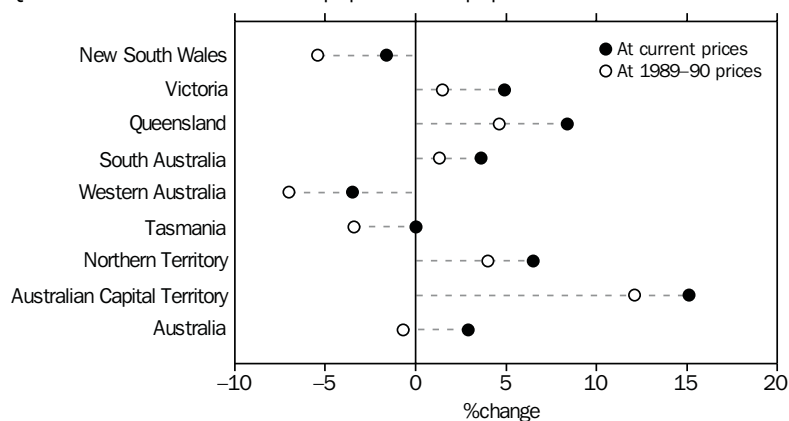
QUARTERLY TAKINGS FROM ACCOMMODATION, Australia: Trend



Note: There is a break in series between December quarter 1996 and March quarter 1997 because of scope changes to the STA. Refer to Explanatory Notes, paragraphs 3 to 7.

In original terms, takings from accommodation fell 8% in the September quarter 2001 compared to the September quarter 2000. New South Wales (down 24%) recorded the largest decrease after record highs during the Olympics. Western Australia and Tasmania were the only other States to record falls in takings.

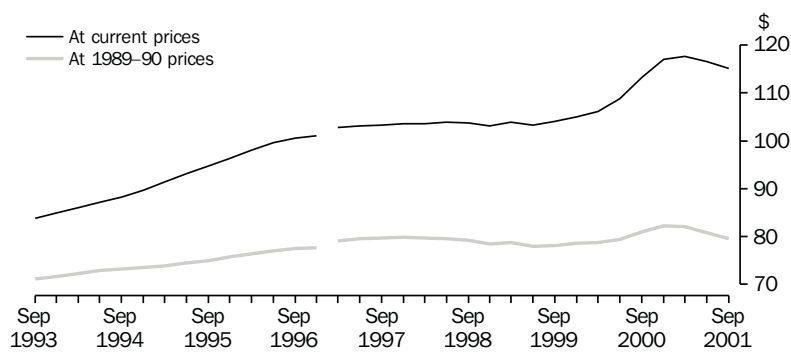
QUARTERLY TAKINGS: Trend—Sep qtr 2000—Sep qtr 2001



Average takings per room night occupied

In the September quarter 2001, the trend series for average takings per room night occupied increased 2% at current prices, but fell 2% at constant prices, compared to the September quarter 2000.

AVERAGE TAKINGS PER ROOM NIGHT OCCUPIED, Australia: Trend



Note: There is a break in series between December quarter 1996 and March quarter 1997 because of scope changes to the STA. Refer to Explanatory Notes, paragraphs 3 to 7.

1

HOTELS, MOTELS, GUEST HOUSES AND SERVICED APARTMENTS—AUSTRALIA(a)

	Room nights occupied(b)			Takings at current prices(b)			Takings at average 1989–90 prices(c)		
	Original	Seasonally adjusted	Trend	Original	Seasonally adjusted	Trend	Original	Seasonally adjusted	Trend
	'000	'000	'000	\$m	\$m	\$m	\$m	\$m	\$m
1991	26 417.8	26 389.6	26 365.3	2 211.7	2 208.4	2 206.9	1 929.0	1 926.7	1 924.1
1992	27 736.6	27 644.9	27 716.7	2 307.3	2 299.4	2 306.3	1 993.5	1 992.1	1 996.2
1993	29 834.6	29 833.6	29 801.5	2 503.1	2 502.5	2 497.8	2 124.0	2 123.0	2 120.2
1994	31 948.5	31 952.4	31 933.7	2 807.9	2 807.1	2 804.1	2 336.5	2 336.0	2 331.5
1995	33 278.7	33 300.3	33 328.7	3 124.9	3 125.7	3 131.0	2 482.9	2 483.9	2 491.1
1996	34 171.6	34 177.7	34 182.4	3 412.9	3 413.6	3 411.7	2 641.1	2 639.0	2 637.3
1997	36 182.8	36 169.7	36 127.8	3 727.8	3 729.1	3 727.2	2 876.0	2 877.0	2 873.1
1998	37 324.5	37 316.6	37 316.2	3 877.8	3 875.6	3 866.7	2 963.4	2 961.2	2 956.6
1999	39 822.3	39 831.5	39 839.9	4 139.7	4 142.7	4 145.0	3 120.6	3 119.3	3 124.7
2000	41 079.6	41 044.0	41 087.2	4 725.0	4 711.4	4 570.2	3 406.1	3 404.0	3 301.0
2000									
Jun qtr	9 999.9	10 515.4	10 295.4	1 039.5	1 121.3	1 119.6	763.9	824.0	817.4
Sep qtr	10 448.6	10 227.3	10 303.6	1 330.1	1 305.7	1 165.9	941.6	922.4	833.8
Dec qtr	10 543.0	10 210.8	10 265.6	1 267.1	1 212.1	1 200.6	894.5	856.2	844.7
2001									
Mar qtr	10 188.6	10 298.7	10 284.9	1 218.1	1 213.2	1 209.4	851.0	846.6	844.3
Jun qtr	9 872.9	10 384.7	10 359.7	1 111.3	1 200.0	1 206.8	770.5	831.5	837.7
Sep qtr	10 619.0	10 398.0	10 413.3	1 226.5	1 201.1	1 199.3	848.3	830.3	827.9

(a) There is a break in series between December quarter 1996 and March quarter 1997 because of scope changes in the STA. Refer to Explanatory Notes, paragraphs 3 to 7.

(b) Australian quarterly seasonally adjusted and trend estimates are the sum of the relevant State and Territory estimates.

(c) The deflator used to revalue current price data in this table is the Consumer Price Index. See paragraphs 9 to 11 of the Explanatory Notes.

2

ACCOMMODATION ESTABLISHMENTS—AUSTRALIA

	Licensed hotels with facilities	Motels and guest houses	Serviced apartments	Star grading					Ungraded	Total
				1	2	3	4	5		
ESTABLISHMENTS AND CAPACITY										
	no.	no.	no.	no.	no.	no.	no.	no.	no.	no.
Sep qtr 2000										
Establishments	774	2 412	641	60	473	1 859	862	93	480	3 827
Guest rooms	76 607	85 078	33 394	1 969	13 593	71 543	67 960	22 402	17 612	195 079
Rooms per establishment	99	35	52	33	29	38	79	241	37	51
Sep qtr 2001										
Establishments	776	2 394	646	61	455	1 867	903	98	432	3 816
Guest rooms	78 241	84 021	34 467	1 962	13 280	71 330	71 687	23 552	14 918	196 729
Rooms per establishment	101	35	53	32	29	38	79	240	35	52
AVERAGE NIGHTLY ROOMS OCCUPIED PER ESTABLISHMENT										
	no.	no.	no.	no.	no.	no.	no.	no.	no.	no.
2000										
Sep qtr	62.7	18.7	31.7	15.2	12.9	21.0	50.9	163.5	18.3	29.8
2001										
Jul	63.5	18.7	34.5	13.9	13.2	21.1	51.9	159.4	17.5	30.5
Aug	64.1	18.1	32.8	14.9	12.3	20.3	51.4	162.8	17.2	29.9
Sep	61.8	19.3	33.7	12.8	13.4	21.8	50.5	154.9	17.5	30.4
Sep qtr	63.1	18.7	33.7	13.9	13.0	21.0	51.3	159.1	17.4	30.3
AVERAGE NIGHTLY GUESTS PER OCCUPIED ROOM										
	no.	no.	no.	no.	no.	no.	no.	no.	no.	no.
2000										
Sep qtr	1.6	1.8	2.2	2.2	1.8	1.8	1.8	1.6	1.9	1.8
2001										
Jul	1.7	1.8	2.2	2.1	1.9	1.9	1.8	1.7	1.9	1.8
Aug	1.6	1.7	2.1	2.2	1.7	1.8	1.7	1.6	1.9	1.8
Sep	1.7	1.8	2.2	1.8	1.8	1.9	1.8	1.7	1.9	1.8
Sep qtr	1.7	1.8	2.2	2.1	1.8	1.9	1.8	1.7	1.9	1.8
AVERAGE LENGTH OF STAY										
	days	days	days	days	days	days	days	days	days	days
2000										
Sep qtr	2.5	1.8	3.9	2.2	1.7	2.1	2.6	2.8	2.7	2.3
2001										
Jul	2.4	1.8	3.8	2.2	1.8	2.1	2.5	2.6	2.8	2.3
Aug	2.3	1.8	3.7	2.3	1.7	2.0	2.4	2.6	2.7	2.3
Sep	2.4	1.8	3.7	2.0	1.7	2.0	2.5	2.7	2.7	2.3
Sep qtr	2.4	1.8	3.7	2.2	1.7	2.0	2.5	2.6	2.7	2.3

3

TAKINGS, ACCOMMODATION ESTABLISHMENTS—AUSTRALIA

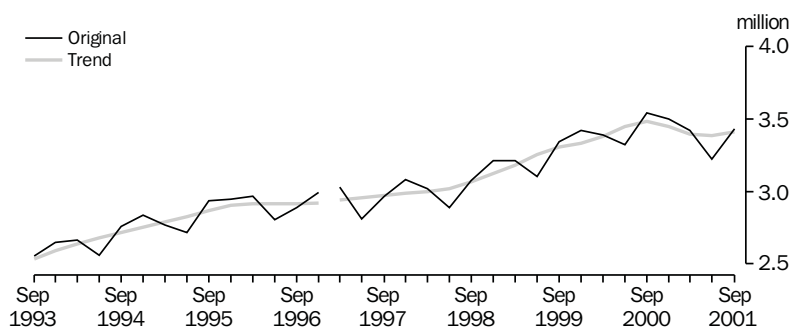
	Licensed hotels with facilities	Motels and guest houses	Serviced apart- ments	Star grading						Total
				1	2	3	4	5	Ungraded	
TAKINGS FROM ACCOMMODATION										
	\$'000	\$'000	\$'000	\$'000	\$'000	\$'000	\$'000	\$'000	\$'000	\$'000
2000										
Sep qtr	698 985	387 739	243 388	7 169	38 122	348 540	548 363	298 738	89 181	1 330 113
2001										
Jul	211 698	124 669	80 760	1 991	12 882	111 545	178 763	88 407	23 539	417 127
Aug	214 595	119 801	75 341	2 431	11 971	105 837	175 846	90 679	22 973	409 737
Sep	202 315	121 116	76 228	1 553	12 180	108 152	168 662	87 660	21 451	399 658
Sep qtr	628 608	365 585	232 329	5 976	37 033	325 534	523 271	266 745	67 963	1 226 522
AVERAGE TAKINGS PER ESTABLISHMENT										
	\$'000	\$'000	\$'000	\$'000	\$'000	\$'000	\$'000	\$'000	\$'000	\$'000
2000										
Sep qtr	903.1	160.8	379.7	119.5	80.6	187.5	636.2	3 212.2	185.8	347.6
2001										
Jul	272.8	52.1	125.0	32.6	28.3	59.7	198.0	902.1	54.5	109.3
Aug	276.5	50.0	116.6	39.9	26.3	56.7	194.7	925.3	53.2	107.4
Sep	260.7	50.6	118.0	25.5	26.8	57.9	186.8	894.5	49.7	104.7
Sep qtr	810.1	152.7	359.6	98.0	81.4	174.4	579.5	2 721.9	157.3	321.4
AVERAGE TAKINGS PER ROOM NIGHT OCCUPIED										
	\$	\$	\$	\$	\$	\$	\$	\$	\$	\$
2000										
Sep qtr	157	94	131	86	68	97	136	214	113	127
2001										
Jul	139	90	117	76	69	92	123	183	100	116
Aug	139	89	115	86	69	90	122	183	100	116
Sep	141	88	117	67	67	89	123	192	95	115
Sep qtr	140	89	116	77	68	90	123	186	98	116
AVERAGE TAKINGS PER ROOM NIGHT AVAILABLE										
	\$	\$	\$	\$	\$	\$	\$	\$	\$	\$
2000										
Sep qtr	100	50	80	40	31	53	88	145	56	74
2001										
Jul	87	48	76	33	31	50	80	121	51	68
Aug	89	46	71	40	29	48	79	124	50	67
Sep	86	48	74	26	31	51	78	124	48	68
Sep qtr	87	47	73	33	30	50	79	123	50	68
AVERAGE TAKINGS PER GUEST NIGHT										
	\$	\$	\$	\$	\$	\$	\$	\$	\$	\$
2000										
Sep qtr	96	53	60	40	38	53	77	132	60	72
2001										
Jul	82	50	52	36	37	48	67	109	52	63
Aug	85	52	54	39	39	50	70	112	54	66
Sep	85	49	54	37	37	48	69	117	50	64
Sep qtr	84	50	53	37	38	48	69	112	52	64

NEW SOUTH WALES

Capacity The capacity of accommodation establishments with 15 or more rooms in New South Wales rose 1% in the September quarter 2001 compared to the September quarter 2000. The number of guest rooms in serviced apartments and licensed hotels increased by 4% and 3% respectively. The number of guest rooms in motels and guest houses declined (2%).

Room nights occupied Room nights occupied fell 3% in original and seasonally adjusted terms and 2% in trend terms in the September quarter 2001 compared to the September quarter 2000.

QUARTERLY ROOM NIGHTS OCCUPIED, New South Wales

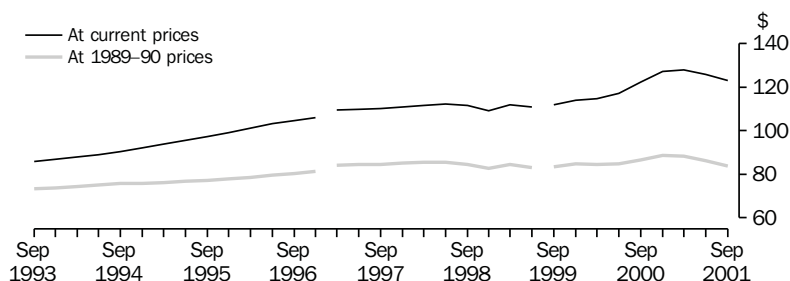


Notes: There is a break in series between December quarter 1996 and March quarter 1997 because of scope changes to STA. Refer to Explanatory Notes, paragraphs 3 to 7.

Average nightly rooms occupied per establishment Average nightly rooms occupied per establishment fell 4% in the September quarter 2001 compared to the September quarter 2000, driven by falls in average nightly rooms occupied in hotels (7%) and motels (5%).

Takings from accommodation Total takings from accommodation establishments fell 24% in the September quarter 2001 compared to the same period in 2000, after record highs during the Olympics. Takings from licensed hotels and serviced apartments both decreased 28% and motels and guest houses fell 16%.

AVERAGE TAKINGS PER ROOM NIGHT OCCUPIED, New South Wales: Trend



Notes: There are two breaks in series:
 (a) between December quarter 1996 and March quarter 1997 because of scope changes to the STA. Refer to Explanatory Notes, paragraphs 3 to 7; and
 (b) between June quarter and September quarter 1999 because of a sudden sustained increase in takings from accommodation.

4

HOTELS, MOTELS, GUEST HOUSES AND SERVICED APARTMENTS—NEW SOUTH WALES(a)

	Room nights occupied(b)			Takings at current prices(b)			Takings at average 1989–90 prices(c)		
	Original	Seasonally adjusted	Trend	Original	Seasonally adjusted	Trend	Original	Seasonally adjusted	Trend
	'000	'000	'000	\$m	\$m	\$m	\$m	\$m	\$m
1991	8 928.1	8 919.9	8 905.1	798.6	798.3	796.5	696.5	696.4	694.7
1992	9 389.7	9 356.8	9 376.0	812.6	810.1	811.9	702.7	702.9	703.4
1993	10 065.0	10 061.2	10 050.7	863.7	863.4	863.3	736.1	735.9	736.5
1994	10 817.2	10 807.6	10 787.6	972.9	972.2	970.4	814.4	814.0	811.9
1995	11 363.4	11 358.6	11 385.4	1 097.1	1 096.9	1 099.2	873.1	873.1	876.3
1996	11 654.7	11 670.7	11 662.6	1 209.5	1 211.5	1 210.2	933.1	933.1	932.6
1997	11 887.0	11 869.1	11 857.3	1 303.6	1 304.7	1 304.7	1 003.5	1 003.2	1 001.5
1998	12 195.4	12 198.5	12 206.4	1 361.2	1 361.7	1 357.1	1 035.5	1 035.3	1 032.3
1999	13 081.1	13 095.0	13 073.9	1 463.7	1 465.6	1 466.9	1 095.0	1 094.5	1 097.0
2000	13 753.2	13 738.9	13 756.4	1 808.2	1 804.6	1 656.0	1 291.8	1 291.1	1 185.4
2000									
Jun qtr	3 323.9	3 464.0	3 446.4	374.0	400.6	404.0	272.4	291.5	292.4
Sep qtr	3 543.3	3 552.6	3 484.0	566.3	566.7	426.5	398.0	397.8	302.2
Dec qtr	3 498.0	3 406.8	3 446.5	470.0	454.1	438.2	328.9	317.5	305.3
2001									
Mar qtr	3 421.1	3 383.1	3 393.9	441.9	429.9	434.0	304.9	296.3	299.6
Jun qtr	3 223.7	3 363.1	3 386.3	388.3	416.5	426.4	266.1	284.9	291.9
Sep qtr	3 429.2	3 446.2	3 412.8	428.7	430.1	419.8	292.8	292.5	285.8

(a) There is a break in series between December quarter 1996 and March quarter 1997 because of scope changes in the STA. Refer to Explanatory Notes, paragraphs 3 to 7.

(b) For presentation purposes the quarterly seasonally adjusted estimates for room nights occupied and takings at current prices are derived by summing the relevant monthly figures, while the quarterly trend estimates are derived from these quarterly seasonally adjusted figures.

(c) The deflator used to revalue current price data in this table is the Sydney All Groups Consumer Price Index. See paragraphs 9 to 11 of the Explanatory Notes.

5

ACCOMMODATION ESTABLISHMENTS—NEW SOUTH WALES

	Licensed hotels with facilities	Motels and guest houses	Serviced apartments	Star grading						Total
				1	2	3	4	5	Ungraded	
ESTABLISHMENTS AND CAPACITY										
	no.	no.	no.	no.	no.	no.	no.	no.	no.	no.
Sep qtr 2000										
Establishments	191	1 002	133	28	177	698	213	23	187	1 326
Guest rooms	24 241	33 432	7 327	1 077	4 939	25 979	19 540	6 226	7 239	65 000
Rooms per establishment	127	33	55	38	28	37	92	271	39	49
Sep qtr 2001										
Establishments	199	991	134	30	177	707	221	26	163	1 324
Guest rooms	25 028	32 787	7 600	1 145	5 139	25 882	21 107	6 876	5 266	65 415
Rooms per establishment	126	33	57	38	29	37	96	264	32	49
AVERAGE NIGHTLY ROOMS OCCUPIED PER ESTABLISHMENT										
	no.	no.	no.	no.	no.	no.	no.	no.	no.	no.
2000										
Sep qtr	87.0	17.8	33.0	19.2	13.1	21.1	62.2	184.4	20.1	29.3
2001										
Jul	83.4	16.8	34.8	17.6	13.7	20.0	63.1	170.8	15.1	28.6
Aug	80.7	16.0	31.3	19.3	12.6	18.7	60.7	165.1	14.1	27.2
Sep	78.6	18.0	33.1	14.3	14.0	21.2	60.7	164.2	14.1	28.6
Sep qtr	81.0	16.9	33.1	17.1	13.4	20.0	61.5	166.7	14.4	28.2
AVERAGE NIGHTLY GUESTS PER OCCUPIED ROOM										
	no.	no.	no.	no.	no.	no.	no.	no.	no.	no.
2000										
Sep qtr	1.6	1.8	1.9	2.5	1.8	1.8	1.6	1.4	1.9	1.7
2001										
Jul	1.7	1.8	2.1	2.4	1.9	1.9	1.7	1.6	2.0	1.8
Aug	1.7	1.7	2.0	2.5	1.8	1.8	1.6	1.6	2.0	1.7
Sep	1.6	1.8	2.0	1.9	1.8	1.9	1.7	1.6	1.8	1.8
Sep qtr	1.7	1.8	2.0	2.3	1.8	1.8	1.7	1.6	1.9	1.8
AVERAGE LENGTH OF STAY										
	days	days	days	days	days	days	days	days	days	days
2000										
Sep qtr	2.7	1.7	3.6	2.5	1.6	2.0	2.4	2.9	2.6	2.2
2001										
Jul	2.7	1.7	3.3	2.5	1.7	1.9	2.4	2.8	2.6	2.1
Aug	2.5	1.6	3.1	2.6	1.7	1.8	2.2	2.7	2.5	2.1
Sep	2.5	1.7	3.2	2.1	1.7	1.8	2.3	2.8	2.4	2.1
Sep qtr	2.6	1.7	3.2	2.5	1.7	1.8	2.3	2.8	2.5	2.1

6

TAKINGS, ACCOMMODATION ESTABLISHMENTS—NEW SOUTH WALES

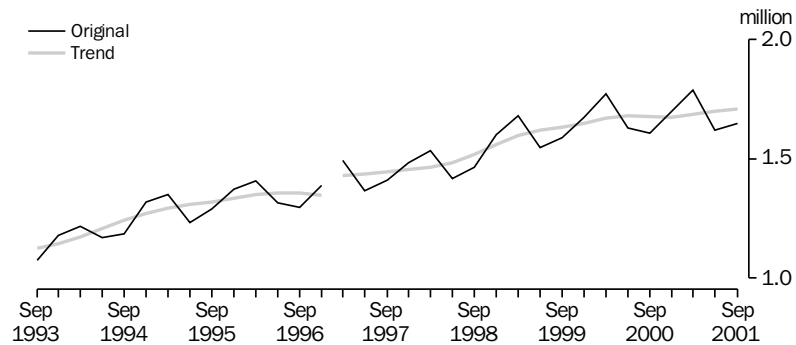
	Licensed hotels with facilities	Motels and guest houses	Serviced apartments	Star grading						Total
				1	2	3	4	5	Ungraded	
TAKINGS FROM ACCOMMODATION										
	\$'000	\$'000	\$'000	\$'000	\$'000	\$'000	\$'000	\$'000	\$'000	\$'000
2000										
Sep qtr	317 606	167 990	80 720	5 137	15 360	155 801	216 231	127 040	46 747	566 315
2001										
Jul	79 914	47 573	20 664	1 415	5 320	42 169	59 203	31 315	8 730	148 151
Aug	76 240	44 855	18 616	1 815	4 899	38 662	56 045	30 013	8 276	139 711
Sep	73 955	48 271	18 567	910	4 925	41 492	55 211	31 503	6 752	140 792
Sep qtr	230 109	140 699	57 846	4 140	15 144	122 323	170 458	92 830	23 759	428 654
AVERAGE TAKINGS PER ESTABLISHMENT										
	\$'000	\$'000	\$'000	\$'000	\$'000	\$'000	\$'000	\$'000	\$'000	\$'000
2000										
Sep qtr	1 662.9	167.7	606.9	183.5	86.8	223.2	1 015.2	5 523.5	250.0	427.1
2001										
Jul	401.6	48.0	154.2	47.2	30.1	59.6	267.9	1 204.4	53.6	111.9
Aug	383.1	45.3	138.9	60.5	27.7	54.7	253.6	1 154.4	50.8	105.5
Sep	371.6	48.7	138.6	30.3	27.8	58.7	249.8	1 211.6	41.4	106.3
Sep qtr	1 156.3	142.0	431.7	138.0	85.6	173.0	771.3	3 570.4	145.8	323.8
AVERAGE TAKINGS PER ROOM NIGHT OCCUPIED										
	\$	\$	\$	\$	\$	\$	\$	\$	\$	\$
2000										
Sep qtr	209	103	205	104	72	116	178	326	143	160
2001										
Jul	155	92	143	86	71	96	137	227	114	126
Aug	153	92	143	101	71	94	135	226	116	125
Sep	158	90	140	71	66	92	137	246	99	124
Sep qtr	155	91	142	88	69	94	136	233	110	125
AVERAGE TAKINGS PER ROOM NIGHT AVAILABLE										
	\$	\$	\$	\$	\$	\$	\$	\$	\$	\$
2000										
Sep qtr	143	55	123	52	34	65	121	222	74	96
2001										
Jul	103	47	88	40	33	53	91	147	54	73
Aug	98	44	79	51	31	48	86	141	51	69
Sep	99	49	81	27	32	53	87	153	43	72
Sep qtr	100	47	83	39	32	51	88	147	49	71
AVERAGE TAKINGS PER GUEST NIGHT										
	\$	\$	\$	\$	\$	\$	\$	\$	\$	\$
2000										
Sep qtr	134	58	106	42	39	65	112	225	74	94
2001										
Jul	91	50	70	36	38	51	80	140	58	70
Aug	93	53	73	40	40	53	83	141	59	72
Sep	96	50	71	38	36	50	82	155	54	71
Sep qtr	93	51	71	38	38	51	82	145	57	71

VICTORIA

Capacity The total capacity of accommodation establishments with 15 or more rooms in Victoria rose 4% in the September quarter 2001 compared to the September quarter 2000. The number of rooms in licensed hotels and serviced apartments increased by 8% and 12% respectively, while motels and guest houses fell 1%.

Room nights occupied Room nights occupied increased in original and trend terms by 3% and 2% respectively in the September quarter 2001 compared to the September quarter 2000.

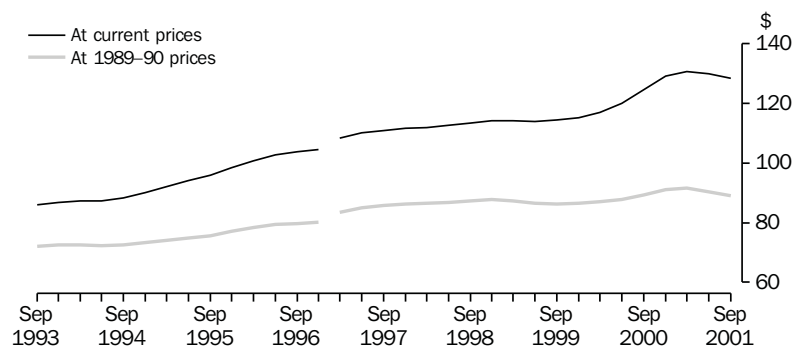
QUARTERLY ROOM NIGHTS OCCUPIED, Victoria



Note: There is a break in series between December quarter 1996 and March quarter 1997 because of scope changes to STA. Refer to Explanatory Notes, paragraphs 3 to 7.

Takings from accommodation Takings from accommodation increased 3% in the September quarter 2001 compared to the September quarter 2000, reaching \$214.1m. Serviced apartments and licensed hotels both recorded gains (up 7% and 6% respectively). Motels and guest houses was the only accommodation type to record a fall in takings (4%).

AVERAGE TAKINGS PER ROOM NIGHT OCCUPIED, Victoria: **Trend**



Note: There is a break in series between December quarter 1996 and March quarter 1997 because of scope changes to STA. Refer to Explanatory Notes, paragraphs 3 to 7.

7

HOTELS, MOTELS, GUEST HOUSES AND SERVICED APARTMENTS—VICTORIA(a)

	Room nights occupied(b)			Takings at current prices(b)			Takings at average 1989–90 prices(c)		
	Original	Seasonally adjusted	Trend	Original	Seasonally adjusted	Trend	Original	Seasonally adjusted	Trend
	'000	'000	'000	\$m	\$m	\$m	\$m	\$m	\$m
1991	4 209.1	4 212.3	4 209.7	369.1	369.4	370.2	318.4	318.7	318.8
1992	4 367.6	4 359.1	4 366.1	382.5	382.0	382.5	327.3	327.3	327.5
1993	4 490.5	4 497.5	4 498.1	391.6	392.8	388.2	328.8	329.6	326.1
1994	4 890.8	4 895.1	4 894.5	432.5	432.7	432.1	356.8	356.6	356.1
1995	5 248.4	5 259.5	5 255.6	497.7	499.3	500.1	394.0	395.5	396.4
1996	5 411.1	5 410.0	5 410.9	555.7	556.6	556.8	431.2	430.4	430.4
1997	5 754.2	5 761.7	5 766.1	634.9	635.7	635.6	490.3	491.6	491.2
1998	6 016.7	6 027.2	6 027.4	681.0	682.4	681.8	523.9	524.8	524.7
1999	6 488.5	6 497.8	6 503.0	741.5	743.5	744.2	561.5	562.5	563.5
2000	6 709.9	6 701.0	6 703.1	823.0	821.2	823.0	595.4	594.6	594.7
2000									
Jun qtr	1 628.9	1 704.4	1 679.7	185.3	201.3	201.8	136.6	148.3	147.3
Sep qtr	1 608.7	1 662.3	1 677.3	207.4	209.7	209.2	147.2	147.4	149.7
Dec qtr	1 698.9	1 662.6	1 674.7	217.3	214.0	216.4	153.7	152.6	152.6
2001									
Mar qtr	1 787.2	1 700.3	1 685.5	241.4	224.7	220.2	168.9	156.7	154.2
Jun qtr	1 619.6	1 694.9	1 700.1	202.6	220.1	220.7	141.0	153.1	153.7
Sep qtr	1 649.2	1 709.2	1 708.6	214.1	217.1	219.5	148.3	150.8	152.0

(a) There is a break in series between December quarter 1996 and March quarter 1997 because of scope changes in the STA. Refer to Explanatory Notes, paragraphs 3 to 7.

(b) For presentation purposes the quarterly seasonally adjusted estimates for room nights occupied and takings at current prices are derived by summing the relevant monthly figures, while the quarterly trend estimates are derived from these quarterly seasonally adjusted figures.

(c) The deflator used to revalue current price data in this table is the Melbourne All Groups Consumer Price Index. See paragraphs 9 to 11 of the Explanatory Notes.

	Licensed hotels with facilities	Motels and guest houses	Serviced apart- ments	Star grading						Total
				1	2	3	4	5	Ungraded	
ESTABLISHMENTS AND CAPACITY										
	no.	no.	no.	no.	no.	no.	no.	no.	no.	no.
Sep qtr 2000										
Establishments	126	500	77	8	75	372	188	16	44	703
Guest rooms	11 371	15 655	4 132	270	2 000	11 648	12 124	3 577	1 539	31 158
Rooms per establishment	90	31	54	34	27	31	64	224	35	44
Sep qtr 2001										
Establishments	129	495	83	8	67	369	201	20	42	707
Guest rooms	12 239	15 422	4 613	259	1 735	11 608	12 814	4 186	1 672	32 274
Rooms per establishment	95	31	56	32	26	31	64	209	40	46
AVERAGE NIGHTLY ROOMS OCCUPIED PER ESTABLISHMENT										
	no.	no.	no.	no.	no.	no.	no.	no.	no.	no.
2000										
Sep qtr	58.2	14.6	37.3	13.2	9.1	15.1	41.3	156.7	19.1	24.9
2001										
Jul	61.6	14.5	39.6	13.0	7.1	15.6	41.1	144.2	21.4	26.0
Aug	62.3	13.7	37.6	12.9	6.7	14.8	39.9	149.9	21.6	25.4
Sep	57.0	14.3	36.2	14.7	7.6	15.4	37.6	134.4	21.1	24.6
Sep qtr	60.3	14.2	37.8	13.5	7.1	15.3	39.5	142.9	21.4	25.4
AVERAGE NIGHTLY GUESTS PER OCCUPIED ROOM										
	no.	no.	no.	no.	no.	no.	no.	no.	no.	no.
2000										
Sep qtr	1.5	1.7	1.8	1.3	1.9	1.8	1.6	1.4	1.8	1.7
2001										
Jul	1.6	1.8	2.0	1.7	1.9	1.9	1.7	1.5	1.9	1.7
Aug	1.5	1.7	1.9	1.6	1.9	1.8	1.6	1.4	1.8	1.7
Sep	1.5	1.8	1.9	1.7	1.8	1.8	1.6	1.4	1.8	1.7
Sep qtr	1.5	1.8	1.9	1.7	1.9	1.9	1.6	1.5	1.9	1.7
AVERAGE LENGTH OF STAY										
	days	days	days	days	days	days	days	days	days	days
2000										
Sep qtr	2.2	1.7	3.1	1.3	1.7	2.0	2.1	2.3	2.8	2.1
2001										
Jul	2.1	1.8	3.3	1.2	1.7	2.0	2.2	2.2	2.7	2.1
Aug	2.0	1.8	3.0	1.2	1.7	1.9	2.0	2.1	2.7	2.0
Sep	2.0	1.7	3.2	1.4	1.7	1.9	2.0	2.1	2.8	2.0
Sep qtr	2.0	1.8	3.2	1.3	1.7	1.9	2.1	2.2	2.7	2.0

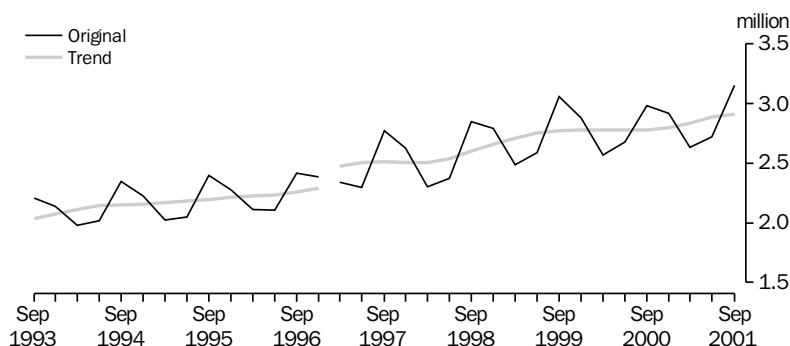
	Licensed hotels with facilities	Motels and guest houses	Serviced apartments	Star grading						Total
				1	2	3	4	5	Ungraded	
TAKINGS FROM ACCOMMODATION										
	\$'000	\$'000	\$'000	\$'000	\$'000	\$'000	\$'000	\$'000	\$'000	\$'000
2000										
Sep qtr	103 846	64 951	38 634	582	4 431	47 664	94 884	49 201	10 668	207 430
2001										
Jul	38 239	22 127	14 777	197	993	17 379	34 390	18 212	3 972	75 143
Aug	38 133	20 723	13 805	195	928	16 408	32 783	18 400	3 947	72 661
Sep	33 920	19 664	12 752	238	996	15 358	29 187	16 802	3 756	66 337
Sep qtr	110 292	62 515	41 335	630	2 917	49 145	96 361	53 415	11 674	214 141
AVERAGE TAKINGS PER ESTABLISHMENT										
	\$'000	\$'000	\$'000	\$'000	\$'000	\$'000	\$'000	\$'000	\$'000	\$'000
2000										
Sep qtr	824.2	129.9	501.7	72.8	59.1	128.1	504.7	3 075.1	242.4	295.1
2001										
Jul	296.4	44.7	178.0	24.7	14.8	47.1	171.1	910.6	94.6	106.3
Aug	295.6	41.9	166.3	24.4	13.8	44.5	163.1	920.0	94.0	102.8
Sep	262.9	39.7	153.6	29.7	14.9	41.6	145.2	840.1	89.4	93.8
Sep qtr	855.0	126.3	498.0	78.8	43.5	133.2	479.4	2 670.7	278.0	302.9
AVERAGE TAKINGS PER ROOM NIGHT OCCUPIED										
	\$	\$	\$	\$	\$	\$	\$	\$	\$	\$
2000										
Sep qtr	154	97	146	64	71	92	133	213	139	129
2001										
Jul	155	100	145	61	67	97	134	204	142	132
Aug	153	98	143	61	66	97	132	198	141	131
Sep	154	93	142	68	66	90	129	208	141	127
Sep qtr	154	97	143	63	66	95	132	203	141	130
AVERAGE TAKINGS PER ROOM NIGHT AVAILABLE										
	\$	\$	\$	\$	\$	\$	\$	\$	\$	\$
2000										
Sep qtr	99	45	102	25	24	45	85	150	76	73
2001										
Jul	101	46	103	25	19	48	87	140	77	75
Aug	101	43	97	24	17	46	83	142	76	73
Sep	92	43	92	31	19	44	76	134	75	69
Sep qtr	98	44	97	27	18	46	82	139	76	72
AVERAGE TAKINGS PER GUEST NIGHT										
	\$	\$	\$	\$	\$	\$	\$	\$	\$	\$
2000										
Sep qtr	102	56	80	48	38	50	84	152	78	78
2001										
Jul	99	55	73	37	35	52	79	137	73	76
Aug	101	57	76	38	35	53	82	138	78	79
Sep	100	53	75	41	36	49	79	144	78	75
Sep qtr	100	55	75	38	35	51	80	140	76	77

QUEENSLAND

Capacity The number of establishments with 15 or more rooms in Queensland fell 1% between the September quarter 2000 and the September quarter 2001. Capacity increased marginally.

Room nights occupied Room nights occupied during the September quarter 2001 increased in original, trend and seasonally adjusted terms compared to the September quarter 2000, by 6%, 5% and 7% respectively.

QUARTERLY ROOM NIGHTS OCCUPIED, Queensland

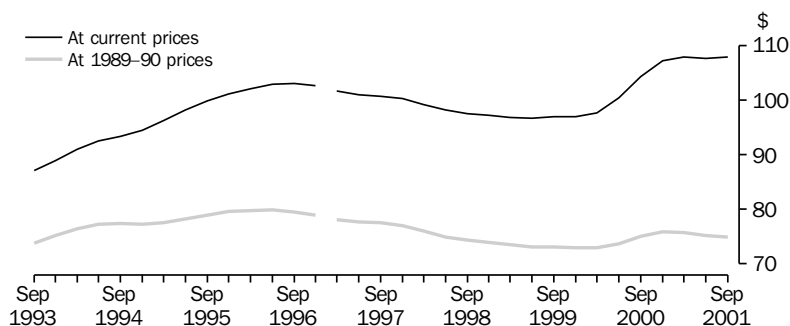


Note: There is a break in series between December quarter 1996 and March quarter 1997 because of scope changes to STA. Refer to Explanatory Notes, paragraphs 3 to 7.

Average nightly rooms occupied per establishment Average nightly rooms occupied per establishment increased 6% in the September quarter 2001 compared with the September quarter 2000. Average nightly rooms occupied per establishment increased for all accommodation types, with serviced apartments showing the largest increase in percentage terms (11%).

Takings from accommodation In the September quarter 2001, takings from accommodation totalled \$336.6m, an increase of 7% (\$22.6m) on the September quarter 2000. Takings from serviced apartments and motels and guest houses both increased by 9% while takings in licensed hotels increased 6%.

AVERAGE TAKINGS PER ROOM NIGHT OCCUPIED, Queensland: Trend



Notes: There is a break in series between December quarter 1996 and March quarter 1997 because of scope changes to STA. Refer to Explanatory Notes, paragraphs 3 to 7.

HOTELS, MOTELS, GUEST HOUSES AND SERVICED APARTMENTS—QUEENSLAND(a)

	Room nights occupied(b)			Takings at current prices(b)			Takings at average 1989–90 prices(c)		
	Original	Seasonally adjusted	Trend	Original	Seasonally adjusted	Trend	Original	Seasonally adjusted	Trend
	'000	'000	'000	\$m	\$m	\$m	\$m	\$m	\$m
1991	6 761.7	6 743.9	6 737.3	559.8	557.3	556.5	490.7	488.9	488.0
1992	7 224.9	7 191.7	7 236.8	609.4	605.9	610.0	528.8	527.6	530.9
1993	8 089.6	8 088.3	8 075.0	702.5	701.4	701.5	596.3	595.5	595.5
1994	8 566.7	8 564.8	8 562.4	797.1	796.4	795.4	661.9	661.6	660.1
1995	8 753.9	8 755.3	8 761.2	866.1	865.1	866.5	687.5	686.6	688.7
1996	9 023.1	9 007.8	9 008.2	928.2	926.7	925.4	718.5	717.8	716.3
1997	10 034.9	10 021.6	9 992.7	1 012.1	1 010.3	1 008.8	778.2	777.0	775.8
1998	10 317.9	10 295.0	10 303.3	1 015.0	1 011.8	1 010.6	772.3	770.4	770.3
1999	11 014.0	11 004.2	11 015.4	1 068.9	1 067.9	1 067.3	806.1	805.0	805.4
2000	11 149.5	11 132.1	11 139.8	1 146.1	1 138.8	1 141.2	827.9	826.9	828.5
2000									
Jun qtr	2 677.2	2 858.8	2 781.6	252.8	281.0	279.2	186.3	207.0	204.9
Sep qtr	2 982.4	2 722.1	2 781.5	313.9	290.8	290.2	222.8	207.8	208.6
Dec qtr	2 919.7	2 801.6	2 796.3	326.5	300.8	300.1	231.1	211.6	212.2
2001									
Mar qtr	2 635.3	2 839.8	2 839.1	288.3	305.9	306.2	202.5	216.4	214.9
Jun qtr	2 720.6	2 906.0	2 886.8	280.2	312.1	310.9	194.9	216.6	217.0
Sep qtr	3 155.7	2 899.7	2 914.7	336.6	313.5	314.7	233.7	217.8	218.2

(a) There is a break in series between December quarter 1996 and March quarter 1997 because of scope changes in the STA. Refer to Explanatory Notes, paragraphs 3 to 7.

(b) For presentation purposes the quarterly seasonally adjusted estimates for room nights occupied and takings at current prices are derived by summing the relevant monthly figures, while the quarterly trend estimates are derived from these quarterly seasonally adjusted figures.

(c) The deflator used to revalue current price data in this table is the Brisbane All Groups Consumer Price Index. See paragraphs 9 to 11 of the Explanatory Notes.

	Licensed hotels with facilities	Motels and guest houses	Serviced apartments	Star grading						Total
				1	2	3	4	5	Ungraded	
ESTABLISHMENTS AND CAPACITY										
	no.	no.	no.	no.	no.	no.	no.	no.	no.	no.
Sep qtr 2000										
Establishments	172	513	273	10	100	414	287	32	115	958
Guest rooms	20 668	18 370	13 517	251	2 452	15 317	22 019	8 167	4 349	52 555
Rooms per establishment	120	36	50	25	25	37	77	255	38	55
Sep qtr 2001										
Establishments	167	513	272	9	96	415	297	32	103	952
Guest rooms	20 708	18 392	13 496	208	2 417	15 327	22 729	8 093	3 822	52 596
Rooms per establishment	124	36	50	23	25	37	77	253	37	55
AVERAGE NIGHTLY ROOMS OCCUPIED PER ESTABLISHMENT										
	no.	no.	no.	no.	no.	no.	no.	no.	no.	no.
2000										
Sep qtr	77.3	21.5	29.8	11.5	11.6	22.9	49.1	167.0	19.8	33.9
2001										
Jul	81.6	23.4	33.4	10.0	12.7	24.3	52.3	168.9	23.1	36.5
Aug	82.2	23.1	32.7	10.4	12.1	23.6	52.5	171.1	22.7	36.2
Sep	78.4	22.5	33.4	11.2	12.0	23.5	50.1	168.4	23.6	35.4
Sep qtr	80.8	23.0	33.2	10.5	12.3	23.8	51.7	169.5	23.1	36.0
AVERAGE NIGHTLY GUESTS PER OCCUPIED ROOM										
	no.	no.	no.	no.	no.	no.	no.	no.	no.	no.
2000										
Sep qtr	1.9	1.8	2.5	1.9	1.8	2.0	2.1	1.9	1.9	2.0
2001										
Jul	1.9	1.8	2.5	1.9	1.9	2.0	2.1	1.9	2.1	2.0
Aug	1.8	1.8	2.4	1.9	1.7	1.9	2.0	1.9	1.9	2.0
Sep	1.9	1.8	2.5	1.9	1.8	2.0	2.1	1.9	2.1	2.0
Sep qtr	1.9	1.8	2.4	1.9	1.8	2.0	2.1	1.9	2.0	2.0
AVERAGE LENGTH OF STAY										
	days	days	days	days	days	days	days	days	days	days
2000										
Sep qtr	2.8	2.1	4.9	2.8	1.7	2.5	3.2	3.1	3.2	2.9
2001										
Jul	2.7	2.1	4.6	3.2	1.7	2.5	3.1	2.9	3.3	2.8
Aug	2.7	2.0	4.5	3.0	1.8	2.4	3.1	2.8	3.2	2.8
Sep	2.8	2.0	4.4	3.2	1.8	2.4	3.1	3.0	3.3	2.8
Sep qtr	2.7	2.0	4.5	3.1	1.7	2.4	3.1	2.9	3.2	2.8

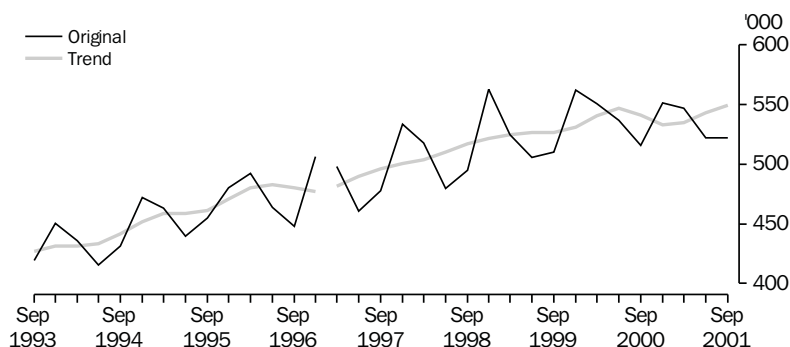
	Licensed hotels with facilities	Motels and guest houses	Serviced apartments	Star grading						Total
				1	2	3	4	5	Ungraded	
TAKINGS FROM ACCOMMODATION										
	\$'000	\$'000	\$'000	\$'000	\$'000	\$'000	\$'000	\$'000	\$'000	\$'000
2000										
Sep qtr	157 175	81 471	75 282	559	6 566	70 608	138 577	78 924	18 693	313 928
2001										
Jul	54 380	30 478	27 733	155	2 527	25 676	51 056	26 657	6 520	112 591
Aug	57 506	29 868	26 542	159	2 325	24 568	51 874	28 584	6 406	113 916
Sep	53 969	28 053	28 024	162	2 313	24 219	49 270	27 403	6 680	110 046
Sep qtr	165 855	88 399	82 300	476	7 165	74 463	152 201	82 644	19 605	336 553
AVERAGE TAKINGS PER ESTABLISHMENT										
	\$'000	\$'000	\$'000	\$'000	\$'000	\$'000	\$'000	\$'000	\$'000	\$'000
2000										
Sep qtr	913.8	158.8	275.8	55.9	65.7	170.6	482.8	2 466.4	162.6	327.7
2001										
Jul	325.6	59.4	102.0	17.2	26.3	61.9	171.9	833.0	63.3	118.3
Aug	344.3	58.2	97.6	17.7	24.2	59.2	174.7	893.2	62.2	119.7
Sep	323.2	54.7	103.0	18.0	24.1	58.4	165.9	856.3	64.9	115.6
Sep qtr	993.1	172.3	302.6	52.9	74.6	179.4	512.5	2 582.6	190.3	353.5
AVERAGE TAKINGS PER ROOM NIGHT OCCUPIED										
	\$	\$	\$	\$	\$	\$	\$	\$	\$	\$
2000										
Sep qtr	129	80	101	53	62	81	107	161	89	105
2001										
Jul	129	82	99	56	67	82	106	159	89	105
Aug	135	81	96	55	65	81	107	168	88	107
Sep	137	81	103	54	67	83	110	170	92	109
Sep qtr	134	82	99	55	66	82	108	166	89	107
AVERAGE TAKINGS PER ROOM NIGHT AVAILABLE										
	\$	\$	\$	\$	\$	\$	\$	\$	\$	\$
2000										
Sep qtr	83	48	61	24	29	50	69	105	47	65
2001										
Jul	85	54	66	24	34	54	73	106	55	69
Aug	90	52	63	25	31	52	74	114	54	70
Sep	87	51	69	26	32	53	72	113	58	70
Sep qtr	87	52	66	25	32	53	73	111	56	70
AVERAGE TAKINGS PER GUEST NIGHT										
	\$	\$	\$	\$	\$	\$	\$	\$	\$	\$
2000										
Sep qtr	68	45	40	27	34	42	51	83	46	53
2001										
Jul	69	45	39	29	36	41	51	83	43	52
Aug	73	46	41	28	37	42	53	90	46	55
Sep	74	45	42	28	38	41	53	90	44	54
Sep qtr	72	45	41	29	37	41	52	88	44	53

SOUTH AUSTRALIA

Capacity The total capacity of accommodation establishments with 15 or more rooms in South Australia increased 1% in the September quarter 2001 compared to the September quarter 2000. Serviced apartments recorded the largest increase in guest rooms (7%).

Room nights occupied Room nights occupied rose 1% in both trend and original terms compared to the September quarter 2000.

QUARTERLY ROOM NIGHTS OCCUPIED, South Australia

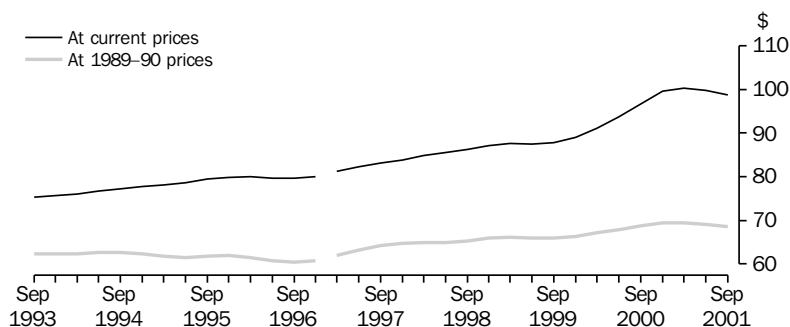


Note: There is a break in series between December quarter 1996 and March quarter 1997 because of scope changes to STA. Refer to Explanatory Notes, paragraphs 3-7.

Average nightly rooms occupied per establishment Serviced apartments was the only accommodation type to show growth (9%) in average nightly rooms occupied per establishment in the September quarter 2001 compared to the September quarter 2000.

Takings from accommodation Takings from accommodation establishments in the September quarter 2001 were \$50.4m, up 1% on the corresponding period in 2000. Serviced apartments showed the strongest growth in takings (12%). Hotels was the only accommodation type to record a decrease (2%).

AVERAGE TAKINGS PER ROOM NIGHT OCCUPIED, South Australia: **Trend**



Notes: There is a series break between December quarter 1996 and March quarter 1997 because of scope changes to STA. Refer to Explanatory Notes, paragraphs 3 to 7.

	<i>Room nights occupied(b)</i>			<i>Takings at current prices(b)</i>			<i>Takings at average 1989–90 prices(c)</i>		
	<i>Original</i>	<i>Seasonally adjusted</i>	<i>Trend</i>	<i>Original</i>	<i>Seasonally adjusted</i>	<i>Trend</i>	<i>Original</i>	<i>Seasonally adjusted</i>	<i>Trend</i>
	'000	'000	'000	\$m	\$m	\$m	\$m	\$m	\$m
1991	1 620.5	1 622.1	1 627.4	121.1	120.9	121.2	104.9	105.0	104.9
1992	1 661.7	1 659.5	1 656.6	122.2	122.0	121.8	103.7	103.2	103.2
1993	1 687.0	1 689.0	1 689.6	126.6	126.6	126.8	105.2	105.1	105.1
1994	1 754.5	1 756.9	1 758.2	135.3	135.3	135.2	110.1	109.9	109.9
1995	1 838.0	1 843.7	1 849.4	145.1	145.5	146.2	113.4	113.8	114.2
1996	1 910.2	1 925.0	1 920.3	152.6	153.5	153.5	116.7	116.6	116.8
1997	1 970.3	1 970.8	1 967.9	163.1	163.2	162.8	125.1	125.4	125.0
1998	2 054.3	2 056.1	2 052.2	176.8	177.1	176.4	134.5	134.0	134.0
1999	2 102.6	2 101.9	2 108.9	185.0	184.9	185.6	138.9	139.1	139.3
2000	2 154.5	2 154.7	2 161.6	204.7	204.6	205.8	147.2	147.3	147.6
2000									
Jun qtr	536.4	565.0	546.7	49.3	51.9	51.2	36.0	37.8	37.1
Sep qtr	516.0	542.6	541.1	50.1	53.5	52.3	35.4	37.3	37.2
Dec qtr	551.4	515.6	533.0	54.9	50.4	53.1	38.7	36.2	37.0
2001									
Mar qtr	547.1	539.6	534.7	55.5	55.2	53.7	38.6	37.5	37.1
Jun qtr	521.9	550.2	542.9	52.1	54.9	54.2	36.0	37.8	37.5
Sep qtr	521.9	541.9	549.2	50.4	52.8	54.2	34.8	37.3	37.7

(a) There is a break in series between December quarter 1996 and March quarter 1997 because of scope changes in the STA. Refer to Explanatory Notes, paragraphs 3 to 7.

(b) For presentation purposes the quarterly seasonally adjusted estimates for room nights occupied and takings at current prices are derived by summing the relevant monthly figures, while the quarterly trend estimates are derived from these quarterly seasonally adjusted figures.

(c) The deflator used to revalue current price data in this table is the Adelaide All Groups Consumer Price Index. See paragraphs 9 to 11 of the Explanatory Notes.

	Licensed hotels with facilities	Motels and guest houses	Serviced apartments	Star grading					Ungraded	Total
				1	2	3	4	5		
ESTABLISHMENTS AND CAPACITY										
	no.	no.	no.	no.	no.	no.	no.	no.	no.	no.
Sep qtr 2000										
Establishments	60	147	26	6	52	117	44	4	10	233
Guest rooms	4 070	5 218	1 211	146	1 503	4 511	2 802	1 263	274	10 499
Rooms per establishment	68	35	47	24	29	39	64	316	27	45
Sep qtr 2001										
Establishments	61	146	27	6	51	116	47	4	10	234
Guest rooms	4 078	5 231	1 293	135	1 493	4 446	2 997	1 263	268	10 602
Rooms per establishment	67	36	48	23	29	38	64	316	27	45
AVERAGE NIGHTLY ROOMS OCCUPIED PER ESTABLISHMENT										
	no.	no.	no.	no.	no.	no.	no.	no.	no.	no.
2000										
Sep qtr	38.2	18.0	26.5	5.6	12.3	19.8	36.6	222.4	13.0	24.1
2001										
Jul	37.3	17.2	30.1	3.7	11.7	19.4	36.5	221.3	12.3	23.9
Aug	36.6	16.8	26.2	3.9	11.6	18.3	35.4	219.1	10.6	23.0
Sep	39.0	19.5	30.1	6.4	13.9	21.3	39.1	213.6	13.5	25.8
Sep qtr	37.6	17.8	28.8	4.6	12.4	19.7	37.0	218.0	12.1	24.2
AVERAGE NIGHTLY GUESTS PER OCCUPIED ROOM										
	no.	no.	no.	no.	no.	no.	no.	no.	no.	no.
2000										
Sep qtr	1.5	1.7	2.0	1.7	1.7	1.7	1.6	1.3	2.2	1.6
2001										
Jul	1.5	1.7	2.0	1.6	1.7	1.8	1.7	1.3	1.8	1.7
Aug	1.4	1.6	1.9	1.6	1.6	1.7	1.6	1.3	2.0	1.6
Sep	1.5	1.7	2.0	1.8	1.7	1.7	1.7	1.3	2.0	1.7
Sep qtr	1.5	1.7	1.9	1.7	1.7	1.7	1.6	1.3	1.9	1.6
AVERAGE LENGTH OF STAY										
	days	days	days	days	days	days	days	days	days	days
2000										
Sep qtr	1.9	1.7	3.2	1.5	1.6	1.8	2.2	2.0	3.1	1.9
2001										
Jul	1.9	1.7	3.3	1.6	1.8	1.8	2.2	2.1	2.7	2.0
Aug	1.8	1.7	3.0	1.4	1.7	1.8	2.0	1.9	2.5	1.9
Sep	1.9	1.7	3.0	1.6	1.7	1.8	2.1	2.1	2.2	1.9
Sep qtr	1.9	1.7	3.1	1.5	1.7	1.8	2.1	2.0	2.4	1.9

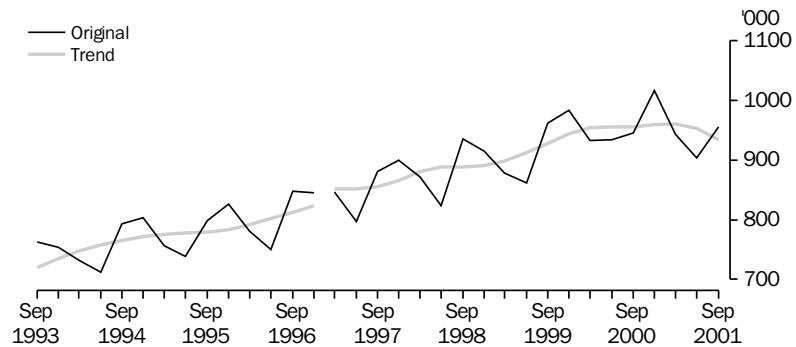
	Licensed hotels with facilities	Motels and guest houses	Serviced apart- ments	Star grading						Total
				1	2	3	4	5	Ungraded	
TAKINGS FROM ACCOMMODATION										
	\$'000	\$'000	\$'000	\$'000	\$'000	\$'000	\$'000	\$'000	\$'000	\$'000
2000										
Sep qtr	23 960	19 897	6 252	160	3 305	16 215	17 215	12 300	915	50 110
2001										
Jul	7 860	6 533	2 505	34	1 117	5 546	6 001	3 892	307	16 898
Aug	7 656	6 335	2 122	42	1 132	5 092	5 832	3 771	243	16 113
Sep	7 981	7 058	2 392	57	1 262	5 793	6 272	3 726	321	17 432
Sep qtr	23 498	19 926	7 019	134	3 512	16 432	18 105	11 389	871	50 442
AVERAGE TAKINGS PER ESTABLISHMENT										
	\$'000	\$'000	\$'000	\$'000	\$'000	\$'000	\$'000	\$'000	\$'000	\$'000
2000										
Sep qtr	399.3	135.4	240.5	26.6	63.6	138.6	391.3	3 075.0	91.5	215.1
2001										
Jul	128.9	44.7	92.8	5.7	21.9	47.8	127.7	973.0	30.7	72.2
Aug	125.5	43.4	78.6	7.0	22.2	43.9	124.1	942.7	24.3	68.9
Sep	130.8	48.3	88.6	9.5	24.7	49.9	133.4	931.6	32.1	74.5
Sep qtr	385.2	136.5	259.9	22.3	68.9	141.7	385.2	2 847.3	87.1	215.6
AVERAGE TAKINGS PER ROOM NIGHT OCCUPIED										
	\$	\$	\$	\$	\$	\$	\$	\$	\$	\$
2000										
Sep qtr	114	82	99	51	56	77	116	150	77	97
2001										
Jul	111	84	99	50	60	79	113	142	80	97
Aug	111	83	97	58	62	77	113	139	74	96
Sep	112	83	98	50	59	78	114	145	80	96
Sep qtr	111	83	98	52	60	78	113	142	78	97
AVERAGE TAKINGS PER ROOM NIGHT AVAILABLE										
	\$	\$	\$	\$	\$	\$	\$	\$	\$	\$
2000										
Sep qtr	64	41	56	12	24	39	67	106	36	52
2001										
Jul	62	40	63	8	24	40	65	99	37	51
Aug	61	39	53	10	25	37	63	96	29	49
Sep	65	45	62	14	28	43	70	98	40	55
Sep qtr	63	41	59	11	26	40	66	98	35	52
AVERAGE TAKINGS PER GUEST NIGHT										
	\$	\$	\$	\$	\$	\$	\$	\$	\$	\$
2000										
Sep qtr	78	49	50	30	32	45	71	116	35	60
2001										
Jul	76	48	50	32	36	45	67	107	44	59
Aug	78	52	52	36	38	46	73	109	38	61
Sep	74	48	50	28	35	45	68	109	40	58
Sep qtr	76	49	51	31	36	45	69	108	41	59

WESTERN AUSTRALIA

Capacity The number of accommodation establishments with 15 or more rooms in Western Australia and the capacity of those establishments fell slightly in the September quarter 2001 compared to the September quarter 2000. Serviced apartments was the only accommodation type to record an increase in capacity, up 4% (164 guest rooms).

Room nights occupied The trend estimate of room nights occupied fell 2% in the September quarter 2001 compared to the September quarter 2000, while in original terms room nights occupied rose 1%.

QUARTERLY ROOM NIGHTS OCCUPIED, Western Australia



Note: There is a break in series between December quarter 1996 and March quarter 1997 because of scope changes to STA. Refer to Explanatory Notes, paragraphs 3 to 7.

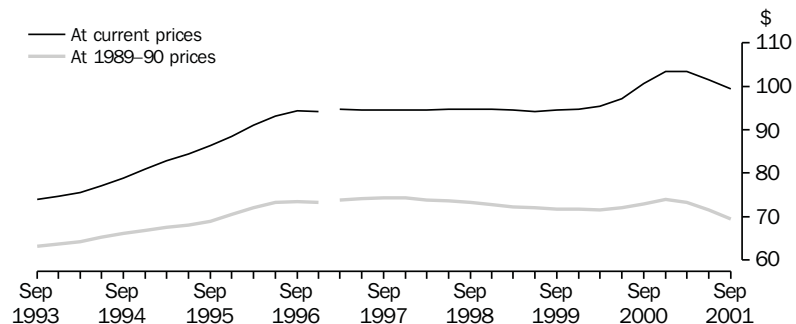
Average nightly rooms occupied per establishment

Average nightly rooms occupied in licensed hotels and serviced apartments increased by 5% and 4% respectively while average nightly rooms occupied in motels and guest houses fell 3%.

Takings from accommodation

Takings from accommodation establishments totalled \$95m in the September quarter 2001, down 1% on the corresponding period in 2000. Motels and guest houses was the only accommodation type to record a fall in takings (10%). Takings from serviced apartments showed the strongest growth (5%).

AVERAGE TAKINGS PER ROOM NIGHT OCCUPIED, Western Australia: Trend



Notes: There is a break in series between December quarter 1996 and March quarter 1997 because of scope changes in STA. Refer to Explanatory Notes, paragraphs 3 to 7.

	Room nights occupied(b)			Takings at current prices(b)			Takings at average 1989–90 prices(c)		
	Original	Seasonally adjusted	Trend	Original	Seasonally adjusted	Trend	Original	Seasonally adjusted	Trend
	'000	'000	'000	\$m	\$m	\$m	\$m	\$m	\$m
1991	2 566.6	2 563.0	2 556.1	180.2	179.9	179.8	157.6	157.4	157.3
1992	2 645.7	2 634.5	2 636.6	189.6	188.8	188.6	165.5	165.2	165.0
1993	2 835.3	2 836.0	2 841.5	209.0	209.0	209.4	179.7	179.4	179.8
1994	3 041.7	3 042.6	3 042.6	237.9	237.6	237.8	200.2	200.0	199.7
1995	3 119.8	3 121.7	3 117.4	266.8	266.9	266.7	214.3	214.3	214.5
1996	3 223.3	3 220.6	3 230.1	301.2	300.8	301.0	235.8	235.7	235.7
1997	3 424.9	3 426.5	3 424.9	323.8	323.8	324.2	253.8	253.7	253.9
1998	3 547.2	3 550.0	3 547.9	336.5	336.5	336.2	260.7	260.7	260.5
1999	3 686.1	3 685.7	3 682.1	348.4	348.7	348.1	265.2	265.1	265.1
2000	3 827.7	3 822.1	3 825.6	380.3	379.2	379.5	278.1	278.1	277.8
2000									
Jun qtr	934.0	987.4	955.5	88.1	93.2	92.9	65.6	70.1	68.8
Sep qtr	945.5	920.1	955.8	96.2	93.9	96.2	69.1	66.7	69.8
Dec qtr	1 016.0	972.0	960.0	106.1	101.4	99.4	76.1	73.1	71.0
2001									
Mar qtr	942.7	968.3	960.8	98.6	101.0	99.3	70.3	71.1	70.4
Jun qtr	903.1	954.3	953.0	90.3	95.5	96.7	63.5	67.8	68.2
Sep qtr	956.3	925.4	933.9	95.0	92.3	92.8	66.7	64.4	64.9

(a) There is a break in series between December quarter 1996 and March quarter 1997 because of scope changes in the STA. Refer to Explanatory Notes, paragraphs 3 to 7.

(b) For presentation purposes the quarterly seasonally adjusted estimates for room nights occupied and takings at current prices are derived by summing the relevant monthly figures, while the quarterly trend estimates are derived from these quarterly seasonally adjusted figures.

(c) The deflator used to revalue current price data in this table is the Perth All Groups Consumer Price Index. See paragraphs 9 to 11 of the Explanatory Notes.

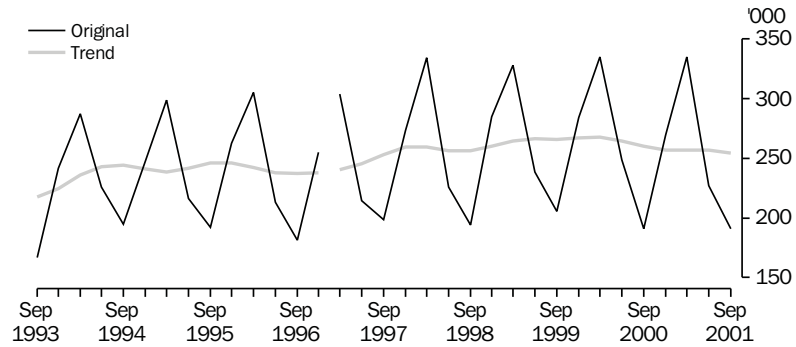
	Licensed hotels with facilities	Motels and guest houses	Serviced apartments	1 and ungraded	Star grading				Total
					2	3	4	5	
ESTABLISHMENTS AND CAPACITY									
	no.	no.	no.	no.	no.	no.	no.	no.	no.
Sep qtr 2000									
Establishments	133	124	69	91	26	131	64	14	326
Guest rooms	9 510	5 824	3 718	2 951	919	7 423	5 365	2 394	19 052
Rooms per establishment	72	47	54	32	35	57	84	171	58
Sep qtr 2001									
Establishments	130	125	68	84	23	135	69	12	323
Guest rooms	9 492	5 669	3 882	2 816	777	7 467	5 624	2 359	19 043
Rooms per establishment	73	45	57	34	34	55	82	197	59
AVERAGE NIGHTLY ROOMS OCCUPIED PER ESTABLISHMENT									
	no.	no.	no.	no.	no.	no.	no.	no.	no.
2000									
Sep qtr	40.7	22.9	29.2	12.7	17.5	28.4	51.6	117.0	31.5
2001									
Jul	39.2	20.5	30.4	13.0	16.2	27.0	47.5	111.7	30.1
Aug	45.3	21.4	29.3	13.4	15.6	28.2	52.1	137.7	32.7
Sep	43.9	24.6	31.6	14.5	17.0	31.7	52.9	116.2	33.8
Sep qtr	42.8	22.1	30.4	13.6	16.3	28.9	50.8	122.0	32.2
AVERAGE NIGHTLY GUESTS PER OCCUPIED ROOM									
	no.	no.	no.	no.	no.	no.	no.	no.	no.
2000									
Sep qtr	1.5	1.6	2.1	1.6	1.6	1.7	1.7	1.6	1.7
2001									
Jul	1.5	1.7	2.2	1.6	1.7	1.7	1.7	1.7	1.7
Aug	1.5	1.6	2.1	1.5	1.5	1.6	1.6	1.6	1.6
Sep	1.5	1.7	2.1	1.5	1.6	1.7	1.7	1.6	1.7
Sep qtr	1.5	1.6	2.1	1.5	1.6	1.7	1.7	1.6	1.7
AVERAGE LENGTH OF STAY									
	days	days	days	days	days	days	days	days	days
2000									
Sep qtr	2.1	2.0	3.2	2.1	2.0	2.1	2.5	2.8	2.3
2001									
Jul	2.1	2.1	3.4	2.4	2.1	2.2	2.5	2.6	2.4
Aug	2.2	2.1	3.4	2.4	2.0	2.2	2.4	2.8	2.4
Sep	2.1	2.0	3.3	2.2	1.8	2.1	2.4	2.6	2.3
Sep qtr	2.1	2.1	3.3	2.4	2.0	2.2	2.4	2.7	2.3

	Licensed hotels with facilities	Motels and guest houses	Serviced apart- ments	Star grading					Total
				1 and ungraded	2	3	4	5	
TAKINGS FROM ACCOMMODATION									
	\$'000	\$'000	\$'000	\$'000	\$'000	\$'000	\$'000	\$'000	\$'000
2000									
Sep qtr	54 947	22 534	18 741	6 798	3 092	27 551	35 385	23 397	96 222
2001									
Jul	17 163	6 347	6 666	2 333	899	9 460	11 944	5 540	30 176
Aug	19 760	6 531	6 411	2 442	824	9 767	12 852	6 817	32 702
Sep	18 179	7 306	6 608	2 425	840	10 632	12 492	5 704	32 092
Sep qtr	55 101	20 184	19 685	7 200	2 562	29 859	37 289	18 061	94 970
AVERAGE TAKINGS PER ESTABLISHMENT									
	\$'000	\$'000	\$'000	\$'000	\$'000	\$'000	\$'000	\$'000	\$'000
2000									
Sep qtr	413.1	181.7	271.6	74.7	118.9	210.3	552.9	1 671.2	295.2
2001									
Jul	132.0	50.8	98.0	27.8	39.1	70.1	173.1	461.6	93.4
Aug	152.0	52.2	94.3	29.1	35.8	72.3	186.3	568.1	101.2
Sep	139.8	58.4	97.2	28.9	36.5	78.8	181.0	475.3	99.4
Sep qtr	423.9	161.5	289.5	85.7	111.4	221.2	540.4	1 505.0	294.0
AVERAGE TAKINGS PER ROOM NIGHT OCCUPIED									
	\$	\$	\$	\$	\$	\$	\$	\$	\$
2000									
Sep qtr	110	86	101	64	74	80	117	155	102
2001									
Jul	109	80	104	69	78	84	118	133	100
Aug	108	79	104	70	74	83	115	133	100
Sep	106	79	103	66	72	83	114	136	98
Sep qtr	108	79	104	68	74	83	116	134	99
AVERAGE TAKINGS PER ROOM NIGHT AVAILABLE									
	\$	\$	\$	\$	\$	\$	\$	\$	\$
2000									
Sep qtr	63	42	55	25	37	40	72	106	55
2001									
Jul	58	36	55	27	37	41	69	76	51
Aug	67	37	53	28	34	42	74	93	55
Sep	64	43	57	29	36	48	74	81	56
Sep qtr	63	39	55	28	36	44	72	83	54
AVERAGE TAKINGS PER GUEST NIGHT									
	\$	\$	\$	\$	\$	\$	\$	\$	\$
2000									
Sep qtr	74	53	47	41	47	47	70	96	62
2001									
Jul	73	48	47	44	46	49	68	80	59
Aug	74	49	50	46	48	51	70	83	62
Sep	71	48	49	43	45	50	67	84	59
Sep qtr	73	48	49	44	47	50	68	83	60

TASMANIA

Capacity The total number of accommodation establishments with 15 or more rooms in Tasmania and the capacity of these establishments both fell by 2% in the September quarter 2001 compared to the September quarter 2000.

QUARTERLY ROOM NIGHTS OCCUPIED, Tasmania



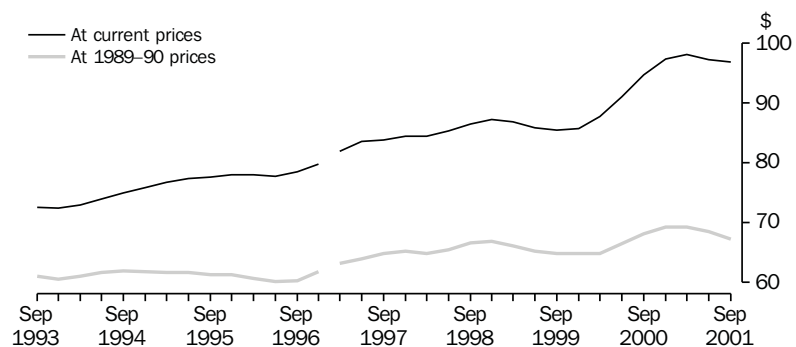
Note: There is a break in series between December quarter 1996 and March quarter 1997 because of scope changes to STA. Refer to Explanatory Notes, paragraphs 3 to 7.

Room nights occupied Room nights occupied fell 2% in trend terms in the September quarter 2001 compared to the September quarter 2000.

Average nightly rooms occupied per establishment During the September quarter 2001, average nightly rooms occupied per establishment rose 2% compared to the September quarter 2000, with serviced apartments recording a 6% increase.

Takings from accommodation Takings from accommodation establishments totalled \$17.9m in the September quarter 2001, down 1% on the corresponding period in 2000. Takings from hotels decreased 6%, more than offsetting increases in takings from serviced apartments (7%) and motels (4%).

AVERAGE TAKINGS PER ROOM NIGHT OCCUPIED, Tasmania: Trend



Note: There is a break in series between December quarter 1996 and March quarter 1997 because of scope changes to STA. Refer to Explanatory Notes, paragraphs 3-7.

	Room nights occupied(b)			Takings at current prices(b)			Takings at average 1989–90 prices(c)		
	Original	Seasonally adjusted	Trend	Original	Seasonally adjusted	Trend	Original	Seasonally adjusted	Trend
	'000	'000	'000	\$m	\$m	\$m	\$m	\$m	\$m
1991	817.4	816.9	815.7	58.2	58.3	58.2	51.3	51.2	51.1
1992	815.4	815.3	822.4	59.1	59.0	59.5	51.4	51.6	52.0
1993	878.6	876.5	872.2	63.9	63.7	63.4	54.2	54.0	53.8
1994	954.9	960.9	964.3	70.9	71.5	71.8	58.7	59.4	59.4
1995	970.1	975.8	972.4	75.0	75.5	75.3	59.7	59.9	59.8
1996	954.4	952.8	955.0	75.2	74.9	75.0	58.3	57.8	58.0
1997	990.3	996.7	998.0	82.5	83.2	83.2	63.7	64.3	64.1
1998	1 039.1	1 035.5	1 032.1	89.7	89.2	88.6	68.7	68.5	68.1
1999	1 056.3	1 061.2	1 063.9	90.1	90.8	91.4	68.6	68.8	69.4
2000	1 043.9	1 044.6	1 049.3	96.2	96.7	97.2	70.2	70.2	70.5
2000									
Jun qtr	248.5	278.7	264.8	21.7	24.8	24.1	16.1	18.2	17.6
Sep qtr	191.0	250.4	259.9	18.1	24.4	24.6	12.9	17.4	17.7
Dec qtr	269.5	252.7	256.7	26.4	24.3	25.0	18.8	17.5	17.8
2001									
Mar qtr	335.1	265.1	256.7	33.7	26.3	25.2	23.9	18.6	17.8
Jun qtr	227.3	253.9	256.9	21.8	24.7	25.0	15.3	17.3	17.6
Sep qtr	190.9	252.5	254.2	17.9	24.2	24.6	12.6	16.8	17.1

(a) There is a break in series between December quarter 1996 and March quarter 1997 because of scope changes in the STA. Refer to Explanatory Notes, paragraphs 3 to 7.

(b) For presentation purposes the quarterly seasonally adjusted estimates for room nights occupied and takings at current prices are derived by summing the relevant monthly figures, while the quarterly trend estimates are derived from these quarterly seasonally adjusted figures.

(c) The deflator used to revalue current price data in this table is the Hobart All Groups Consumer Price Index. See paragraphs 9 to 11 of the Explanatory Notes.

	Licensed hotels with facilities	Motels and guest houses	Serviced apart- ments	Star grading				Total
				1 and ungraded	2	3	4 and 5	
ESTABLISHMENTS AND CAPACITY								
	no.	no.	no.	no.	no.	no.	no.	no.
Sep qtr 2000								
Establishments	54	51	25	9	16	73	32	130
Guest rooms	2 909	1 749	876	291	439	2 738	2 066	5 534
Rooms per establishment	54	34	35	32	27	38	65	43
Sep qtr 2001								
Establishments	52	50	25	9	15	71	32	127
Guest rooms	2 847	1 671	910	211	467	2 626	2 124	5 428
Rooms per establishment	55	33	36	23	31	37	66	43
AVERAGE NIGHTLY ROOMS OCCUPIED PER ESTABLISHMENT								
	no.	no.	no.	no.	no.	no.	no.	no.
2000								
Sep qtr	20.6	11.5	15.6	7.1	6.3	11.8	33.1	16.1
2001								
Jul	19.1	10.7	14.5	6.5	5.0	10.7	31.1	14.9
Aug	19.9	11.4	14.9	7.2	6.3	10.6	33.4	15.6
Sep	22.4	14.0	20.1	9.1	9.2	13.5	37.2	18.7
Sep qtr	20.5	12.0	16.5	7.6	6.8	11.6	33.9	16.4
AVERAGE NIGHTLY GUESTS PER OCCUPIED ROOM								
	no.	no.	no.	no.	no.	no.	no.	no.
2000								
Sep qtr	1.6	1.9	2.1	2.3	1.3	2.0	1.6	1.8
2001								
Jul	1.5	1.8	2.0	2.4	1.5	1.9	1.6	1.7
Aug	1.5	1.8	2.0	2.2	1.4	1.8	1.5	1.7
Sep	1.6	1.9	2.1	2.7	1.3	2.0	1.6	1.8
Sep qtr	1.5	1.8	2.0	2.4	1.4	1.9	1.6	1.7
AVERAGE LENGTH OF STAY								
	days	days	days	days	days	days	days	days
2000								
Sep qtr	1.9	1.8	2.4	2.1	1.9	1.8	2.1	1.9
2001								
Jul	1.9	1.8	2.6	2.6	1.6	1.9	2.1	2.0
Aug	1.8	1.8	2.6	2.5	1.7	1.8	2.1	1.9
Sep	1.9	2.0	2.9	2.6	2.1	1.9	2.3	2.1
Sep qtr	1.8	1.9	2.7	2.6	1.8	1.8	2.2	2.0

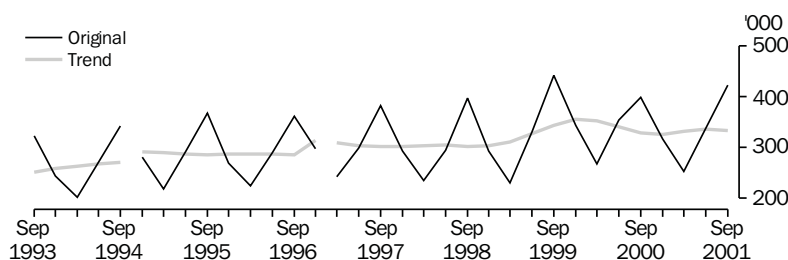
	Licensed hotels with facilities	Motels and guest houses	Serviced apartments	Star grading				Total
				1 and ungraded	2	3	4 and 5	
TAKINGS FROM ACCOMMODATION								
	\$'000	\$'000	\$'000	\$'000	\$'000	\$'000	\$'000	\$'000
2000								
Sep qtr	9 739	4 425	3 888	477	397	5 814	11 364	18 052
2001								
Jul	2 850	1 412	1 205	146	129	1 820	3 373	5 467
Aug	2 959	1 430	1 238	159	162	1 755	3 551	5 627
Sep	3 361	1 753	1 717	239	199	2 261	4 132	6 831
Sep qtr	9 170	4 595	4 161	544	490	5 836	11 056	17 926
AVERAGE TAKINGS PER ESTABLISHMENT								
	\$'000	\$'000	\$'000	\$'000	\$'000	\$'000	\$'000	\$'000
2000								
Sep qtr	180.3	86.8	155.5	53.0	24.8	79.6	355.1	138.9
2001								
Jul	54.8	28.2	48.2	16.2	8.6	25.6	105.4	43.1
Aug	56.9	28.6	49.5	17.6	10.8	24.7	111.0	44.3
Sep	64.6	35.1	68.7	26.5	13.3	31.8	129.1	53.8
Sep qtr	176.4	91.9	166.4	60.4	32.7	82.2	345.5	141.1
AVERAGE TAKINGS PER ROOM NIGHT OCCUPIED								
	\$	\$	\$	\$	\$	\$	\$	\$
2000								
Sep qtr	95	84	108	82	43	74	117	95
2001								
Jul	93	85	107	80	55	77	109	93
Aug	92	81	107	79	56	75	107	92
Sep	96	84	114	98	49	79	116	96
Sep qtr	94	83	110	86	53	77	111	94
AVERAGE TAKINGS PER ROOM NIGHT AVAILABLE								
	\$	\$	\$	\$	\$	\$	\$	\$
2000								
Sep qtr	36	28	48	18	10	23	60	36
2001								
Jul	32	27	43	22	9	22	51	33
Aug	34	28	44	24	11	22	54	33
Sep	39	35	63	38	15	29	65	42
Sep qtr	35	30	50	28	12	24	57	36
AVERAGE TAKINGS PER GUEST NIGHT								
	\$	\$	\$	\$	\$	\$	\$	\$
2000								
Sep qtr	60	44	51	36	33	38	73	54
2001								
Jul	61	47	53	34	36	41	70	55
Aug	62	46	55	36	41	41	70	55
Sep	60	45	55	37	38	40	71	54
Sep qtr	61	46	54	36	38	41	71	55

NORTHERN TERRITORY

Capacity The total number of accommodation establishments with 15 or more rooms in the Northern Territory fell by 2%, to 89, in the September quarter 2001 compared to the September quarter 2000.

Room nights occupied Room nights occupied increased by 6% in both original and seasonally adjusted terms compared to the September quarter 2000.

QUARTERLY ROOM NIGHTS OCCUPIED, Northern Territory



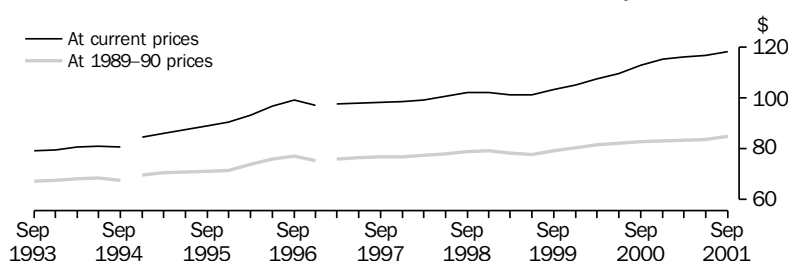
Notes: There is a break in series relating to the Northern Territory because two establishments previously classified as holiday units were reclassified as motels between the September and December quarters 1994.
There is a break in series between December quarter 1996 and March quarter 1997 because of scope changes in STA. Refer to Explanatory Notes, paragraphs 3 to 7.

Average nightly rooms occupied per establishment Average nightly rooms occupied per establishment rose 8% in the September quarter 2001 compared to the September quarter 2000. All accommodation types recorded increases, with hotels showing the largest growth (11%).

Takings from accommodation Takings from accommodation establishments totalled \$51.8m in the September quarter 2001, up 7% on the corresponding period in 2000. All accommodation types except serviced apartments recorded rises in takings. Takings from hotels increased the most (13%).

Average takings per establishment increased by 10%.

AVERAGE TAKINGS PER ROOM NIGHT OCCUPIED, Northern Territory: **Trend**



Notes: There is a break in series relating to the Northern Territory because two establishments previously classified as holiday units were reclassified as motels between the September and December quarters 1994.
There is a break in series between December quarter 1996 and March quarter 1997 because of scope changes to the STA. Refer to Explanatory Notes, paragraphs 3 to 7.

HOTELS, MOTELS, GUEST HOUSES AND SERVICED APARTMENTS—NORTHERN TERRITORY(a)

	Room nights occupied(b)			Takings at current prices(b)			Takings at average 1989–90 prices(c)		
	Original	Seasonally adjusted	Trend	Original	Seasonally adjusted	Trend	Original	Seasonally adjusted	Trend
	'000	'000	'000	\$m	\$m	\$m	\$m	\$m	\$m
1991	817.6	814.5	818.7	66.6	66.2	66.5	58.7	58.2	58.6
1992	872.7	872.1	869.3	69.0	69.1	69.2	59.9	60.2	60.1
1993	989.8	985.1	986.7	78.6	78.3	78.3	67.0	66.9	67.0
1994	1 096.3	1 095.0	1 092.5	89.7	89.4	89.3	75.0	75.1	74.8
1995	1 146.4	1 145.5	1 149.9	101.3	100.9	101.5	81.3	81.1	81.8
1996	1 173.1	1 171.7	1 173.3	113.9	113.3	113.4	88.7	88.7	88.6
1997	1 217.7	1 220.0	1 217.7	119.8	119.9	119.6	93.2	93.5	93.2
1998	1 220.7	1 218.9	1 214.4	124.1	123.4	122.8	95.9	95.5	95.1
1999	1 347.9	1 336.7	1 338.7	139.0	137.8	137.7	106.7	105.6	105.7
2000	1 338.8	1 345.1	1 348.8	149.1	148.8	149.9	110.0	110.5	111.2
2000									
Jun qtr	354.6	359.4	341.1	38.2	38.4	37.4	28.7	28.7	28.0
Sep qtr	399.3	308.5	328.9	48.2	36.3	37.1	35.0	26.7	27.2
Dec qtr	317.7	332.0	326.4	35.8	37.3	37.6	25.9	26.5	27.1
2001									
Mar qtr	252.6	330.4	331.5	28.1	39.1	38.5	20.3	28.4	27.6
Jun qtr	337.9	342.7	335.8	39.0	39.4	39.2	27.9	27.8	28.1
Sep qtr	422.3	327.5	333.5	51.8	39.1	39.5	36.9	28.2	28.3

(a) There is a break in series between December quarter 1996 and March quarter 1997 because of scope changes in the STA. Refer to Explanatory Notes, paragraphs 3 to 7.

(b) For presentation purposes the quarterly seasonally adjusted estimates for room nights occupied and takings at current prices are derived by summing the relevant monthly figures, while the quarterly trend estimates are derived from these quarterly seasonally adjusted figures.

(c) The deflator used to revalue current price data in this table is the Darwin All Groups Consumer Price Index. See paragraphs 9 to 11 of the Explanatory Notes.

	Licensed hotels with facilities	Motels and guest houses	Serviced apart- ments	Star grading				Total
				1 and ungraded	2	3	4 and 5	
ESTABLISHMENTS AND CAPACITY								
Sep qtr 2000	no.	no.	no.	no.	no.	no.	no.	no.
Establishments	23	50	18	22	19	34	16	91
Guest rooms	1 937	3 153	1 168	675	780	2 531	2 272	6 258
Rooms per establishment	84	63	65	31	41	74	142	69
Sep qtr 2001								
Establishments	23	49	17	21	19	33	16	89
Guest rooms	1 943	3 164	1 151	711	773	2 489	2 285	6 258
Rooms per establishment	84	65	68	34	41	75	143	70
AVERAGE NIGHTLY ROOMS OCCUPIED PER ESTABLISHMENT								
2000	no.	no.	no.	no.	no.	no.	no.	no.
Sep qtr	57.5	41.8	51.4	18.9	24.1	49.5	111.4	47.7
2001								
Jul	67.7	48.2	57.2	21.4	29.1	58.0	123.4	54.9
Aug	65.0	46.9	56.1	22.8	26.8	55.7	120.1	53.3
Sep	58.1	40.7	46.3	17.5	23.0	48.6	107.0	46.3
Sep qtr	63.7	45.3	53.3	20.6	26.3	54.1	116.9	51.6
AVERAGE NIGHTLY GUESTS PER OCCUPIED ROOM								
2000	no.	no.	no.	no.	no.	no.	no.	no.
Sep qtr	1.7	1.8	2.1	1.9	1.8	2.0	1.6	1.8
2001								
Jul	1.8	1.8	2.1	1.8	1.9	2.0	1.7	1.8
Aug	1.7	1.7	2.0	1.8	1.7	1.9	1.7	1.8
Sep	1.7	1.7	1.9	1.7	1.7	1.9	1.6	1.7
Sep qtr	1.7	1.7	2.0	1.7	1.8	1.9	1.7	1.8
AVERAGE LENGTH OF STAY								
2000	days	days	days	days	days	days	days	days
Sep qtr	1.8	2.0	3.1	2.3	1.6	2.1	2.3	2.1
2001								
Jul	1.8	1.7	2.9	2.3	1.5	1.9	2.1	2.0
Aug	1.8	1.7	3.1	2.4	1.5	1.8	2.1	1.9
Sep	1.8	1.8	2.9	2.0	1.6	1.9	2.1	1.9
Sep qtr	1.8	1.7	3.0	2.2	1.5	1.9	2.1	1.9

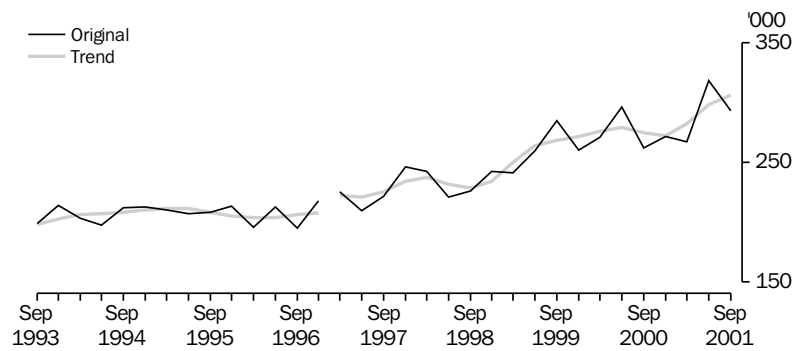
	Licensed hotels with facilities	Motels and guest houses	Serviced apart- ments	Star grading				Total
				1 and ungraded	2	3	4 and 5	
TAKINGS FROM ACCOMMODATION								
	\$'000	\$'000	\$'000	\$'000	\$'000	\$'000	\$'000	\$'000
2000								
Sep qtr	17 605	19 983	10 590	3 309	3 310	19 311	22 248	48 178
2001								
Jul	7 006	7 805	3 687	1 189	1 369	7 599	8 340	18 497
Aug	7 145	7 782	3 663	1 212	1 286	7 519	8 573	18 591
Sep	5 732	6 212	2 758	905	1 021	5 949	6 826	14 702
Sep qtr	19 883	21 799	10 108	3 307	3 676	21 068	23 739	51 790
AVERAGE TAKINGS PER ESTABLISHMENT								
	\$'000	\$'000	\$'000	\$'000	\$'000	\$'000	\$'000	\$'000
2000								
Sep qtr	765.4	399.7	588.3	150.4	174.2	568.0	1 390.5	529.4
2001								
Jul	304.6	159.3	216.9	56.6	72.0	230.3	521.3	207.8
Aug	310.7	158.8	215.5	57.7	67.7	227.9	535.8	208.9
Sep	249.2	126.8	162.2	43.1	53.8	180.3	426.6	165.2
Sep qtr	864.5	444.9	594.6	157.5	193.5	638.4	1 483.7	581.9
AVERAGE TAKINGS PER ROOM NIGHT OCCUPIED								
	\$	\$	\$	\$	\$	\$	\$	\$
2000								
Sep qtr	145	104	124	87	78	125	136	121
2001								
Jul	145	107	122	85	80	128	136	122
Aug	154	109	124	82	81	132	144	126
Sep	143	104	117	82	78	124	133	119
Sep qtr	148	107	121	83	80	128	138	123
AVERAGE TAKINGS PER ROOM NIGHT AVAILABLE								
	\$	\$	\$	\$	\$	\$	\$	\$
2000								
Sep qtr	99	69	99	53	46	83	106	84
2001								
Jul	116	80	103	54	57	99	118	95
Aug	119	79	103	55	54	98	121	96
Sep	98	65	80	43	44	80	100	78
Sep qtr	111	75	96	51	52	92	113	90
AVERAGE TAKINGS PER GUEST NIGHT								
	\$	\$	\$	\$	\$	\$	\$	\$
2000								
Sep qtr	83	59	60	45	44	62	83	66
2001								
Jul	83	60	59	49	43	65	80	67
Aug	89	63	62	46	47	69	85	71
Sep	85	61	60	50	45	65	82	68
Sep qtr	86	61	60	48	45	66	82	68

AUSTRALIAN CAPITAL
TERRITORY

Capacity The total capacity of accommodation establishments with 15 or more rooms in the Australian Capital Territory increased 2% in the September quarter 2001 compared to the September quarter 2000. Serviced apartments recorded the largest increase in guest rooms (5%).

Room nights occupied Room nights occupied during the September quarter 2001 increased in original, trend and seasonally adjusted terms compared to the September quarter 2000, by 12%, 11% and 10% respectively.

QUARTERLY ROOM NIGHTS OCCUPIED, Australian Capital Territory



Note: There is a break in series between December quarter 1996 and March quarter 1997 because of scope changes to the STA. Refer to Explanatory Notes, paragraphs 3 to 7.

Average nightly rooms occupied per establishment

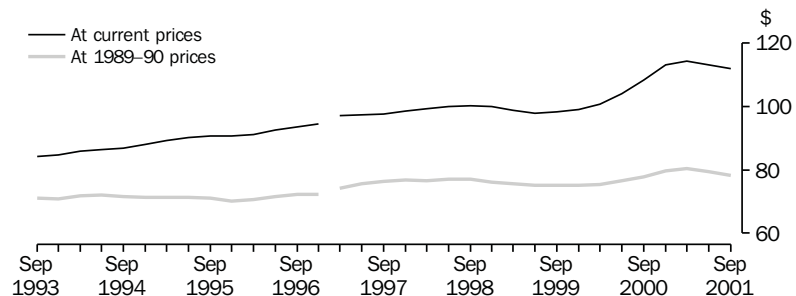
Average nightly rooms occupied per establishment rose 12% in the September quarter 2001 compared to the September quarter 2000, with motels up 15%, licensed hotels up 11% and serviced apartments up 10%.

Takings from accommodation

Takings from accommodation establishments totalled \$32.0m in the September quarter 2001, up 7% on the corresponding period in 2000. All accommodation types recorded increased takings. Takings from motels and guest houses increased the most (15%).

AVERAGE TAKINGS PER ROOM NIGHT OCCUPIED, Australian Capital Territory:

Trend



Notes: There is a break in series between December quarter 1996 and March quarter 1997 because of scope changes to the STA. Refer to Explanatory Notes, paragraphs 3 to 7.

HOTELS, MOTELS, GUEST HOUSES AND SERVICED APARTMENTS—AUSTRALIAN CAPITAL TERRITORY(a)

	Room nights occupied(b)			Takings at current prices(b)			Takings at average 1989–90 prices(c)		
	Original	Seasonally adjusted	Trend	Original	Seasonally adjusted	Trend	Original	Seasonally adjusted	Trend
	'000	'000	'000	\$m	\$m	\$m	\$m	\$m	\$m
1991	696.7	697.1	695.3	58.1	58.2	58.0	50.8	50.9	50.7
1992	758.9	755.9	753.0	62.9	62.5	62.8	54.1	54.1	54.2
1993	798.9	799.9	787.7	67.2	67.3	67.0	56.6	56.6	56.4
1994	826.4	829.6	831.5	71.6	72.0	72.2	59.4	59.4	59.7
1995	838.7	840.3	837.4	75.7	75.7	75.5	59.6	59.7	59.5
1996	821.5	819.0	822.1	76.5	76.3	76.5	58.8	58.9	58.9
1997	903.3	903.3	903.2	88.1	88.2	88.3	68.3	68.3	68.4
1998	933.1	935.2	932.5	93.5	93.5	93.1	71.9	72.0	71.6
1999	1 045.8	1 049.0	1 054.0	103.1	103.5	103.8	78.7	78.7	79.2
2000	1 102.0	1 105.6	1 102.7	117.4	117.5	117.6	85.4	85.4	85.3
2000									
Jun qtr	296.4	297.7	279.5	30.1	30.1	29.1	22.3	22.5	21.4
Sep qtr	262.4	268.7	275.0	29.9	30.3	29.8	21.3	21.3	21.4
Dec qtr	271.9	267.5	272.1	30.1	29.8	30.8	21.4	21.1	21.7
2001									
Mar qtr	267.5	272.0	282.7	30.6	31.0	32.3	21.6	21.7	22.7
Jun qtr	318.7	319.6	298.0	37.1	37.0	33.7	25.9	26.1	23.7
Sep qtr	293.4	295.5	306.3	32.0	32.0	34.3	22.4	22.4	24.0

(a) There is a break in series between December quarter 1996 and March quarter 1997 because of scope changes in the STA. Refer to Explanatory Notes, paragraphs 3 to 7.

(b) For presentation purposes the quarterly seasonally adjusted estimates for room nights occupied and takings at current prices are derived by summing the relevant monthly figures, while the quarterly trend estimates are derived from these quarterly seasonally adjusted figures.

(c) The deflator used to revalue current price data in this table is the Canberra All Groups Consumer Price Index. See paragraphs 9 to 11 of the Explanatory Notes.

	Licensed hotels with facilities	Motels and guest houses	Serviced apartments	Star grading				Total
				1 and ungraded	2	3	4 and 5	
ESTABLISHMENTS AND CAPACITY								
Sep qtr 2000	no.	no.	no.	no.	no.	no.	no.	no.
Establishments	15	25	20	10	8	20	22	60
Guest rooms	1 901	1 677	1 445	519	561	1 396	2 547	5 023
Rooms per establishment	127	67	72	52	70	70	116	84
Sep qtr 2001	15	25	20	8	7	21	24	60
Establishments	1 906	1 685	1 522	367	479	1 485	2 782	5 113
Guest rooms	127	67	76	46	68	71	116	85
Rooms per establishment	AVERAGE NIGHTLY ROOMS OCCUPIED PER ESTABLISHMENT							
2000	no.	no.	no.	no.	no.	no.	no.	no.
Sep qtr	73.6	33.8	45.1	27.2	35.2	34.9	72.8	47.5
2001	76.4	36.9	51.9	25.2	37.9	37.8	76.9	51.8
Jul	83.0	35.4	45.9	25.6	29.3	38.8	76.0	50.8
Aug	86.7	44.3	50.8	28.4	42.1	43.7	82.6	57.0
Sep	82.0	38.8	49.5	26.4	36.4	40.1	78.4	53.2
Sep qtr	AVERAGE NIGHTLY GUESTS PER OCCUPIED ROOM							
2000	no.	no.	no.	no.	no.	no.	no.	no.
Sep qtr	1.5	1.8	1.8	1.8	2.0	1.9	1.5	1.7
2001	1.6	1.9	1.9	2.2	2.4	1.9	1.7	1.8
Jul	1.4	1.8	1.8	2.0	2.1	1.8	1.5	1.7
Aug	1.5	1.9	1.9	2.2	2.3	1.9	1.6	1.8
Sep	1.5	1.9	1.9	2.1	2.3	1.9	1.6	1.7
Sep qtr	AVERAGE LENGTH OF STAY							
2000	days	days	days	days	days	days	days	days
Sep qtr	1.8	1.7	4.0	3.0	2.5	2.4	2.0	2.2
2001	1.7	1.9	4.1	3.1	3.3	2.3	2.0	2.2
Jul	1.7	1.7	3.6	2.9	2.9	2.3	1.9	2.1
Aug	2.2	1.8	3.5	3.0	2.7	2.3	2.1	2.3
Sep	1.8	1.8	3.7	3.0	3.0	2.3	2.0	2.2
Sep qtr								

	Licensed hotels with facilities	Motels and guest houses	Serviced apartments	Star grading				Total
				1 and ungraded	2	3	4 and 5	
TAKINGS FROM ACCOMMODATION								
	\$'000	\$'000	\$'000	\$'000	\$'000	\$'000	\$'000	\$'000
2000								
Sep qtr	14 109	6 489	9 281	2 306	1 661	5 576	20 335	29 878
2001								
Jul	4 287	2 394	3 523	532	529	1 895	7 247	10 203
Aug	5 196	2 277	2 944	508	414	2 066	7 429	10 417
Sep	5 217	2 798	3 410	560	624	2 448	7 794	11 425
Sep qtr	14 700	7 469	9 877	1 600	1 567	6 409	22 470	32 045
AVERAGE TAKINGS PER ESTABLISHMENT								
	\$'000	\$'000	\$'000	\$'000	\$'000	\$'000	\$'000	\$'000
2000								
Sep qtr	940.6	259.5	464.0	230.6	207.6	278.8	924.3	498.0
2001								
Jul	285.8	95.7	176.1	66.5	75.6	90.3	301.9	170.0
Aug	346.4	91.1	147.2	63.6	59.1	98.4	309.5	173.6
Sep	347.8	111.9	170.5	70.0	89.2	116.5	324.8	190.4
Sep qtr	980.0	298.8	493.8	200.0	223.9	305.2	936.2	534.1
AVERAGE TAKINGS PER ROOM NIGHT OCCUPIED								
	\$	\$	\$	\$	\$	\$	\$	\$
2000								
Sep qtr	139	83	112	92	64	87	138	114
2001								
Jul	121	84	110	85	64	77	127	106
Aug	135	83	104	80	65	82	131	110
Sep	134	84	112	82	71	89	131	111
Sep qtr	130	84	108	82	67	83	130	109
AVERAGE TAKINGS PER ROOM NIGHT AVAILABLE								
	\$	\$	\$	\$	\$	\$	\$	\$
2000								
Sep qtr	81	42	70	48	32	43	87	65
2001								
Jul	73	46	75	47	36	41	84	64
Aug	88	44	62	45	28	45	86	66
Sep	91	55	75	51	43	55	93	75
Sep qtr	84	48	71	47	36	47	88	68
AVERAGE TAKINGS PER GUEST NIGHT								
	\$	\$	\$	\$	\$	\$	\$	\$
2000								
Sep qtr	94	46	61	52	33	45	91	67
2001								
Jul	74	44	57	39	27	40	77	58
Aug	94	46	57	40	31	45	88	67
Sep	87	44	58	38	31	46	83	63
Sep qtr	85	45	57	39	30	44	83	62

INTERNATIONAL TOURISM

INTRODUCTION

The statistics in this section are sourced from incoming and outgoing passenger cards collected by the Department of Immigration and Multicultural and Indigenous Affairs (DIMIA). DIMIA is currently automating the processing of passenger cards and delays are being experienced.

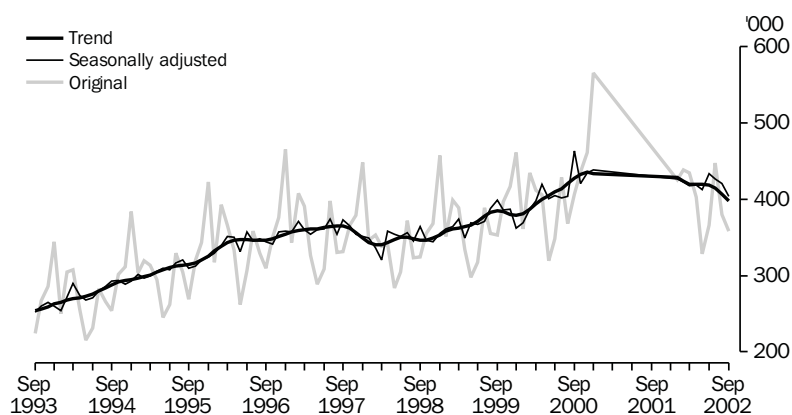
Therefore, the statistics for the months of August 2000 to September 2001 are preliminary estimates of short-term (less than 12 months) movements of visitors to Australia, compiled from information on passports, visas or other travel documents. There is no final data for short-term visitor arrivals nor short-term resident departures.

The statistics presented here supplement those already released in the monthly publication, *Overseas Arrivals and Departures, Australia* (Cat. no. 3401.0).

VISITOR ARRIVALS

An estimated 1,184,900 short-term visitors arrived in Australia during the September quarter 2001, with the largest number arriving during July (447,000). This was a decrease of 2% on the September quarter 2000 (the Olympic Games began in September 2000). Arrivals also fell in seasonally adjusted and trend terms.

OVERSEAS ARRIVALS, Short-term visitors, Total

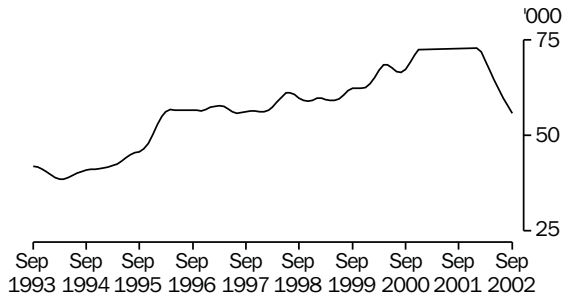


In original terms, the major source countries of visitor arrivals to Australia during the September quarter 2001 were New Zealand (17% of all arrivals), Japan (16%), the United Kingdom (10%) and the United States of America (9%) (see table 28).

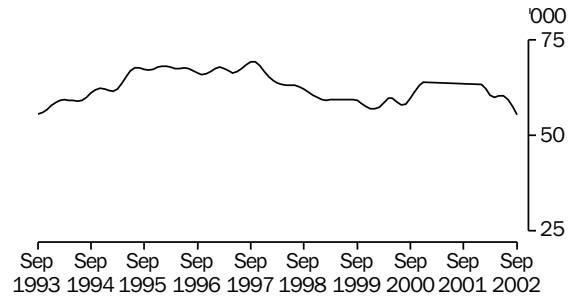
The United States recorded the largest decrease (19%) in visitor numbers to Australia in the September quarter 2001 compared to the September quarter 2000. Visitor arrivals from New Zealand also fell (12%). Arrivals from the United Kingdom and Japan both increased (by 11% and 6% respectively).

The largest increase in visitor numbers in percentage terms came from China, up 49% on the September quarter 2000.

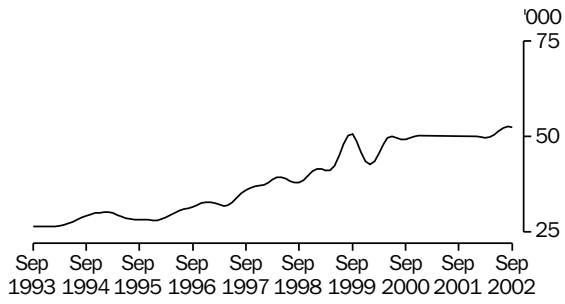
OVERSEAS ARRIVALS, Short-term visitors, NZ: Trend



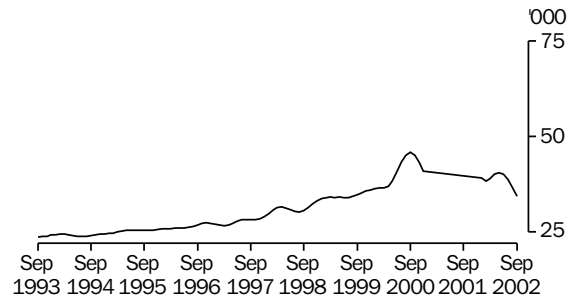
OVERSEAS ARRIVALS, Short-term visitors, Japan: Trend



OVERSEAS ARRIVALS, Short-term visitors, UK: Trend



OVERSEAS ARRIVALS, Short-term visitors, USA: Trend



Country of residence	<i>Original</i>				Change over Sep qtr 2000	Proportion of total visitors	Median intended length of stay	Person days
	<i>Jul p</i>	<i>Aug p</i>	<i>Sep p</i>	<i>Sep qtr 2001 p</i>				
	'000	'000	'000	'000	%	%	days	'000
Oceania and Antarctica								
New Zealand	68.3	66.3	68.4	203.0	-11.6	17.1	n.y.a.	n.y.a.
Other	11.1	8.8	11.0	30.9	-5.5	2.6	n.y.a.	n.y.a.
<i>Total</i>	79.4	75.1	79.4	233.9	-10.9	19.7	n.y.a.	n.y.a.
Europe and the former USSR								
France	n.y.a.	n.y.a.	n.y.a.	n.y.a.	n.y.a.	n.y.a.	n.y.a.	n.y.a.
Germany	12.9	10.2	12.8	35.9	13.6	3.0	n.y.a.	n.y.a.
Italy	5.3	7.0	3.7	16.0	-15.3	1.4	n.y.a.	n.y.a.
Netherlands	5.6	3.3	5.5	14.4	-4.6	1.2	n.y.a.	n.y.a.
Switzerland	3.9	2.3	5.0	11.2	2.8	0.9	n.y.a.	n.y.a.
United Kingdom	44.8	33.4	37.0	115.2	10.9	9.7	n.y.a.	n.y.a.
Other	26.7	18.4	22.3	67.4	-21.4	5.7	n.y.a.	n.y.a.
<i>Total</i>	(a)99.2	(a)74.6	(a)86.3	(a)260.1	-2.3	22.0	n.y.a.	n.y.a.
Middle East and North Africa								
<i>Total</i>	10.8	8.1	4.2	23.1	3.1	1.9	n.y.a.	n.y.a.
Southeast Asia								
Indonesia	10.8	5.3	6.7	22.8	-5.4	1.9	n.y.a.	n.y.a.
Malaysia	11.6	11.2	15.7	38.5	20.7	3.2	n.y.a.	n.y.a.
Singapore	19.5	20.2	19.3	59.0	26.6	5.0	n.y.a.	n.y.a.
Thailand	6.3	5.0	5.9	17.2	17.0	1.5	n.y.a.	n.y.a.
Other	4.8	4.3	3.8	12.9	-10.4	1.1	n.y.a.	n.y.a.
<i>Total</i>	53.0	46.0	51.4	150.4	14.2	12.7	n.y.a.	n.y.a.
Northeast Asia								
China	18.5	14.5	12.5	45.5	49.2	3.8	n.y.a.	n.y.a.
Hong Kong (Special Administrative Region of China)	n.y.a.	n.y.a.	n.y.a.	n.y.a.	n.y.a.	n.y.a.	n.y.a.	n.y.a.
Japan	64.2	74.6	50.5	189.3	6.0	16.0	n.y.a.	n.y.a.
Korea	17.4	12.8	12.2	42.4	8.7	3.6	n.y.a.	n.y.a.
Taiwan	12.8	9.4	7.3	29.5	-17.6	2.5	n.y.a.	n.y.a.
Other	19.1	12.2	9.1	40.4	15.1	3.4	n.y.a.	n.y.a.
<i>Total</i>	132.0	123.5	91.6	347.1	8.8	29.3	n.y.a.	n.y.a.
Southern Asia								
<i>Total</i>	n.y.a.	n.y.a.	n.y.a.	n.y.a.	n.y.a.	n.y.a.	n.y.a.	n.y.a.
The Americas								
Canada	7.0	5.7	5.9	18.6	-11.4	1.6	n.y.a.	n.y.a.
United States of America	46.8	33.7	24.1	104.6	-19.2	8.8	n.y.a.	n.y.a.
Other	4.0	2.0	2.8	8.8	-39.7	0.7	n.y.a.	n.y.a.
<i>Total</i>	57.8	41.4	32.8	132.0	-20.0	11.1	n.y.a.	n.y.a.
Africa								
<i>Total</i>	6.5	6.9	7.1	20.5	-7.7	1.7	n.y.a.	n.y.a.
Other and not stated	(b)8.3	(b)4.3	(b)5.2	(b)17.8	19.5	1.5	n.y.a.	n.y.a.
Total	447.0	379.9	358.0	1 184.9	-1.6	100.0	n.y.a.	n.y.a.

(a) Includes France.

(b) Includes Southern Asia.

Country of residence	2000											2001
	Oct	Nov	Dec	Jan	Feb	Mar	Apr	May	Jun	Jul	Aug	Sep
	'000	'000	'000	'000	'000	'000	'000	'000	'000	'000	'000	'000
ORIGINAL												
Canada	8.3	9.3	11.4	9.7	10.3	10.4	7.2	5.2	4.4	7.0	5.7	5.9
Germany	16.4	14.9	15.1	13.5	17.1	14.1	10.9	7.6	7.2	12.9	10.2	12.8
Hong Kong (Special Administrative Region of China)	n.y.a.	n.y.a.	n.y.a.	n.y.a.	n.y.a.	n.y.a.	n.y.a.	n.y.a.	n.y.a.	n.y.a.	n.y.a.	n.y.a.
Japan	54.7	68.9	71.5	60.6	64.3	70.5	58.9	48.9	50.0	64.2	74.6	50.5
Malaysia	10.9	15.8	19.1	11.6	13.7	12.3	12.0	17.8	9.7	11.6	11.2	15.7
New Zealand	76.2	72.5	75.8	54.7	50.7	59.3	69.2	60.3	68.9	68.3	66.3	68.4
Papua New Guinea	4.6	3.0	5.9	4.2	2.9	3.3	4.2	2.9	4.3	4.5	3.1	4.4
Singapore	18.9	33.9	43.6	18.0	17.4	24.3	20.9	23.9	33.5	19.5	20.2	19.3
United Kingdom	54.9	63.6	88.4	58.2	66.7	59.5	48.0	27.0	36.8	44.8	33.4	37.0
United States of America	39.9	40.3	46.3	36.4	43.6	47.4	35.2	31.6	42.7	46.8	33.7	24.1
Other and not stated	140.1	128.3	175.2	148.1	141.0	122.7	125.2	93.4	97.5	150.7	110.6	109.0
Total	435.6	460.9	565.7	425.9	438.7	434.5	402.6	328.0	365.7	447.0	379.9	358.0
SEASONALLY ADJUSTED												
Canada	7.6	7.6	7.8	7.8	8.3	8.4	8.7	8.3	8.0	7.2	8.0	7.1
Germany	12.0	12.6	11.2	11.9	12.9	12.7	12.4	12.7	12.6	15.2	14.4	14.2
Hong Kong (Special Administrative Region of China)	n.y.a.	n.y.a.	n.y.a.	n.y.a.	n.y.a.	n.y.a.	n.y.a.	n.y.a.	n.y.a.	n.y.a.	n.y.a.	n.y.a.
Japan	60.5	73.9	65.1	60.5	60.6	59.2	61.4	57.5	63.3	57.4	65.7	52.7
Malaysia	13.0	14.0	16.1	13.7	11.5	13.1	13.0	12.8	13.5	14.5	12.4	16.2
New Zealand	66.7	74.4	75.0	70.7	74.7	67.9	66.3	66.3	62.6	55.6	58.8	59.8
Papua New Guinea	4.6	3.2	3.9	3.8	3.8	4.2	4.1	3.8	4.2	3.7	3.6	4.1
Singapore	23.6	23.9	25.2	26.9	24.2	24.8	25.0	25.3	22.6	28.6	29.6	23.2
United Kingdom	49.7	49.3	52.1	50.3	50.6	48.9	48.2	50.1	68.3	56.9	51.9	53.9
United States of America	38.0	40.2	40.6	38.6	37.5	39.8	39.1	40.5	40.1	42.4	39.3	30.7
Other and not stated	133.6	122.9	129.9	135.1	127.8	127.3	129.0	121.9	126.8	132.2	124.4	129.2
Total	421.0	434.4	438.3	427.1	422.5	417.4	418.6	412.9	433.8	427.0	420.6	403.5
TREND												
Canada	8.3	8.1	8.0	8.0	8.1	8.3	8.3	8.2	8.0	7.8	7.6	7.4
Germany	12.6	12.4	12.3	12.1	12.2	12.4	12.7	13.1	13.5	13.8	14.0	14.1
Hong Kong (Special Administrative Region of China)	n.y.a.	n.y.a.	n.y.a.	n.y.a.	n.y.a.	n.y.a.	n.y.a.	n.y.a.	n.y.a.	n.y.a.	n.y.a.	n.y.a.
Japan	61.6	63.1	63.9	63.4	62.1	60.7	60.1	60.4	60.4	59.4	57.7	55.5
Malaysia	13.1	13.6	13.8	13.6	13.4	13.0	12.9	13.1	13.5	13.6	13.5	13.3
New Zealand	69.1	71.1	72.4	72.8	71.9	69.8	67.2	64.5	62.1	59.8	57.8	55.9
Papua New Guinea	3.9	3.9	3.9	3.9	3.9	4.0	4.0	4.0	3.9	3.9	4.0	4.1
Singapore	22.6	23.6	24.6	25.2	25.2	25.0	25.2	25.6	25.8	25.7	25.1	24.0
United Kingdom	49.7	50.1	50.3	50.1	49.8	49.6	49.8	50.5	51.5	52.2	52.6	52.5
United States of America	45.1	43.2	41.0	39.1	38.3	38.9	40.1	40.5	40.1	38.8	36.7	34.4
Other and not stated	135.2	134.7	132.6	130.0	128.1	127.5	127.6	127.3	127.1	126.6	125.5	123.9
Total	432.9	435.1	433.3	428.7	423.4	419.9	419.5	419.5	418.5	414.3	406.9	397.4

EXPLANATORY NOTES

INTRODUCTION

1 This publication brings together tourism data from a number of sources, including data from the quarterly Survey of Tourist Accommodation (STA) and the Overseas Arrivals and Departures Collection (OAD).

TOURIST ACCOMMODATION

2 The series of tables and graphs in the tourist accommodation section of this publication contain statistics for Australia and each State and Territory. Statistics in this publication are the latest available for the September quarter 2001.

Scope and coverage

3 Tourist accommodation establishments included in the STA and for which data appear in this publication are: hotels, motels and guest houses with facilities; and serviced apartments which are available to the general public for a minimum of one night. Every third year, beginning with 2000, the STA is expanded to include: holiday flats, units and houses of letting entities; caravan parks; and visitor hostels. Further information can be found in *Tourist Accommodation, Australia* (Cat. no. 8635.0), available from ABS bookshops or by contacting Neil McKellar-Stewart on Brisbane 07 3222 6201.

4 Data collected and published relate to both long-term and short-term guests at hotels, motels and guest houses. Data relate only to short-term guests at serviced apartments. For hotels, motels and guest houses the amount of long-term residential activity is considered insignificant. This activity is included in the data presented.

5 As a result of the separate classification of serviced apartments from the March quarter 1998, there have been several changes to definitions of accommodation units. Some units which were previously classified as hotels, motels or holiday flats have been reclassified to serviced apartments. A small number of establishments previously classified as motels have been reclassified as holiday flats, units or houses and are no longer in scope of the quarterly STA.

6 From the March quarter 1998, only those in-scope establishments with 15 or more rooms or units are covered by the survey. Data for the 1997 calendar year have been recompiled on the new basis. Data for time periods prior to 1997 have been recompiled to only include accommodation establishments with 15 or more rooms, but have not been recompiled to reflect the inclusion of serviced apartments as a separate classification. This means that data for periods prior to the March quarter 1997 reflect the old classification and only include hotels, motels and guest houses. It should be noted that some serviced apartments may have been included in STA estimates prior to the March quarter 1997, as they may previously have been classified as hotels or motels, as outlined in paragraph 5 above.

7 As a result of the changes to the scope and classification of accommodation establishments there is a break in all time series between the December quarter 1996 and the March quarter 1997.

Scope and coverage <i>continued</i>	<p>8 From 1 July 2000, the item 'takings from accommodation' includes the Goods and Services Tax (GST). Takings relating to the supply of meals continue to be excluded and bed taxes have ceased to apply.</p>
Estimates at constant prices	<p>9 Estimates of quarterly takings from accommodation contained in this publication are also expressed in terms of average 1989–90 prices (constant prices). These estimates are presented in original, seasonally adjusted and trend terms for Australia and each State and Territory. Monthly data at constant prices are not available.</p> <p>10 Takings from accommodation for each State and Territory have been deflated using the All Groups Consumer Price Index (CPI) for the relevant capital city. The CPI has been used as it is a measure of the general extent of price change (inflation) in the economy. (Note: the CPI is only produced for capital cities.) As an example, an increase of 10% in the New South Wales takings from accommodation at 1989–90 prices over a period would mean that New South Wales takings from accommodation increased 10% more than the Sydney CPI over that period, implying that takings from accommodation in New South Wales increased 10% more than inflation.</p> <p>11 General information on price deflators and constant price estimates is contained in section 4 of <i>Australian National Accounts: Concepts, Sources and Methods, 1989</i> (Cat. no. 5216.0).</p>
INTERNATIONAL TOURISM	<p>12 The tables and graphs in the international tourism section of this publication contain statistics on short-term visitors arriving in Australia. Short-term movement relates to an intended length of stay of less than 12 months.</p>
Source of the statistics	<p>13 Persons arriving in, or departing from Australia, are required to complete questionnaires in the form of Incoming and Outgoing Passenger Cards. These cards provide information to the Department of Immigration and Multicultural and Indigenous Affairs (DIMIA) for administrative purposes and serve as the source of statistics of overseas arrivals and departures. In accordance with the <i>Census and Statistics Act 1905</i>, information relating to individuals, individual flights or ships and individual carriers, which is contained in these cards or other documents, is treated as confidential by the Australian Bureau of Statistics.</p> <p>14 Implementation of the <i>Migration Reform Act 1992</i> by DIMIA required that a health and character check be incorporated with the Incoming Passenger Card. The redesign of both passenger cards followed and new passenger cards were officially introduced on 1 September 1994. The main statistical change relating to data in this publication affects the purpose of journey classification and constitutes a break in time series for this data item.</p> <p>15 From July 1998 there have been changes to passenger cards completed by travellers entering and leaving Australia, as well as to international passenger procedures and DIMIA computer systems. Please refer to the May 1998 issue of <i>Overseas Arrivals and Departures, Australia</i> (Cat. no. 3401.0) for more information.</p>

Source of the statistics *continued* **16** DIMIA is currently automating the processing of passenger cards and delays are being experienced. Therefore, the statistics for August 2000 to September 2001 are compiled from information on passports, visas or other travel documents.

Scope **17** The statistics in this publication relate to the number of movements of travellers rather than the number of travellers (i.e. the multiple movements of individual persons during a given reference period are each counted separately). The statistics exclude the movements of operational air and ships' crew, of transit passengers who pass through Australia but are not cleared for entry, and of passengers on pleasure cruises commencing and finishing in Australia aboard ships not then engaged on regular voyages.

Estimation method **18** Overseas arrival and departure statistics are derived from a combination of full enumeration and sampling. All movements with a duration of stay of less than one year are sampled. Statistics relating to these movements are therefore estimates, which may differ from statistics which would have been obtained if details of all these movements had been processed.

Corrections and imputations **19** Imprecision due to sampling errors should not be confused with errors arising from imperfections in reporting, which may occur in any data collection, whether sampled or not. Every effort is made to minimise such errors, by careful design of the passenger cards and through checks on the information once it is received. During the edit process some items are corrected where they conflict with other known information. Missing replies to certain items such as age are also imputed by reference to other related items.

20 Errors of this kind differ from discrepancies arising from the fact that certain information reflects the travellers' intentions at the time the passenger cards were completed. These intentions are, of course, subject to change. Particularly affected is the distinction between permanent and temporary movement and in the latter case, length of intended stay, country in which most time will be spent, and purpose of journey.

SEASONAL ADJUSTMENT

21 Seasonally adjusted and trend estimates are shown in various graphs and tables throughout this publication. In these series, account has been taken of normal seasonal factors, 'trading day' effects (arising from the varying number of Sundays, Mondays, Tuesdays etc. in the month) and the effect of movement in the date of Easter which may, in successive years, affect figures for the months of March and April. For further information contact the Assistant Director, Time Series Analysis on Canberra 02 6252 6345 or by email at <timeseries@abs.gov.au>.

SEASONAL ADJUSTMENT

continued

22 Seasonal adjustment is a means of removing the estimated effects of normal seasonal variation from the series so that the effect of other influences on the series may be more clearly recognised. Seasonal adjustment procedures do not aim to remove the irregular or non-seasonal influences which may be present in any particular month. Irregular influences that are highly volatile can make it difficult to interpret the movement of the series even after adjustment for seasonal variation, and cannot be assumed to indicate changes in the trend.

23 As happens with all seasonally adjusted series, the seasonal factors are reviewed annually to take account of each additional year's data. For the Survey of Tourist Accommodation, the results of the latest review are shown in the March quarter issue of this publication. For the Overseas Arrivals and Departures series, the results of the latest review of seasonal factors are shown in the September quarter issue.

TREND ESTIMATES

24 Smoothing seasonally adjusted series reduces the impact of the irregular component of the seasonally adjusted series and creates the trend estimates. The trend estimates are derived by applying a 13-term Henderson moving average to the monthly seasonally adjusted series and a 7-term Henderson moving average to the quarterly seasonally adjusted series. The 7- and 13-term Henderson averages (like all Henderson averages) are symmetric but, as the end of a time series is approached, asymmetric forms of the average are applied. Unlike the weights of the standard 7-term Henderson moving average, the weights employed with the quarterly data have been tailored to suit the particular characteristics of individual series.

25 While these techniques enable smoothed data for the latest period to be produced, the process does result in revisions to the smoothed series, principally of recent months, as additional observations become available. There may also be revisions as a result of the re-estimation of the seasonal factors. For further information refer to, *Information Paper: A Guide to Interpreting Time Series — Monitoring Trends, an Overview, 1993* (Cat. no. 1348.0), or contact the Assistant Director, Time Series Analysis on Canberra 02 6252 6345 or by email at timeseries@abs.gov.au.

RELATED PUBLICATIONS

26 Comprehensive definitions, explanations and detailed data are contained in the publications below, which can be obtained from ABS Bookshops or by mail order:

Australian Culture and Leisure Classifications (Cat. no. 4902.0)—irregular

Australian Industry, 1998–99 (Cat. no. 8155.0)—annual

Australian National Accounts: Tourism Satellite Account, 1997–98
(Cat. no. 5249.0)—irregular

Business Use of Information Technology 1999–2000, Australia
(Cat. no. 8129.0)—annual

RELATED PUBLICATIONS
continued

- Cafes and Restaurants Industry, Australia, 1998–99*
(Cat. no. 8655.0)—irregular
- Casinos, Australia, 2000–2001* (Cat. no. 8683.0)—annual
- Commercial Art Galleries, Australia* (Cat. no. 8651.0)—irregular
- Consumer Price Index, Australia* (Cat. no. 6401.0)—issued quarterly
- Cultural Funding, Australia* (Cat. no. 4183.0)—irregular
- Directory of Tourism Statistics, 2000* (Cat. no. 1130.0)—irregular
- Experimental Estimates: Australian Industry, A State Perspective*
(Cat. no. 8156.0)—annual
- Film and Video Production and Distribution, Australia, 1999–2000*
(Cat. no. 8679.0)—irregular
- Household Expenditure Survey: Detailed Expenditure Items, 1998–99*
(Cat. no. 6535.0)—five yearly
- Migration, Australia* (Cat. no. 3412.0)—issued annually
- Museums, Australia, 1999–2000* (Cat. no. 8560.0)—irregular
- Overseas Arrivals and Departures, Australia* (Cat. no. 3401.0)—issued monthly
- Retail Industry, Australia, 1998–99* (Cat. no. 8622.0)—irregular
- Tourist Accommodation, Australia* (Cat. no. 8635.0)—issued quarterly
- Tourist accommodation small area data* for each State and the Northern Territory—issued quarterly
- Use of Business Income Tax Data for Regional Small Business Statistics—Experimental Estimates, Selected Regions, Australia, 1995–96 to 1997–98* (Cat. no. 5675.0)—irregular

27 Current publications produced by the ABS are listed in the *Catalogue of Publications and Products* (Cat. no. 1101.0). The ABS also issues on Tuesdays and Fridays, a *Release Advice* (Cat. no. 1105.0) which lists publications to be released in the next few days. Both are available from any ABS office or the ABS website <www.abs.gov.au>.

28 Related statistics are also published by the Bureau of Tourism Research, DIMIA and the Department of Transport and Communications.

ADDITIONAL STATISTICS
AVAILABLE

29 As well as the statistics included in this and related publications, the ABS may have other relevant data available on request. Inquiries should be made to the National Information and Referral Service on 1300 135 070.

ROUNDING

30 Where figures have been rounded, discrepancies may occur between sums of the component items and totals.

GLOSSARY

Average length of stay	Average length of stay is expressed in numbers of days and calculated: <ul style="list-style-type: none">■ for hotels, motels and guest houses, by dividing guest nights by guest arrivals; and■ for serviced apartments, by dividing units nights occupied by unit lettings.
Average nightly guests per occupied room	Guest nights divided by room nights occupied.
Average nightly rooms occupied per establishment	The average number of rooms per establishment multiplied by the occupancy rate for the survey period.
Average takings per establishment	The takings from accommodation for the survey period divided by the number of establishments at the end of the survey period.
Average takings per guest night	The takings from accommodation divided by the total number of guest nights for the survey period.
Average takings per room night available	The takings from accommodation divided by the total room nights available for the survey period.
Average takings per room night occupied	The takings from accommodation divided by the total number of room nights occupied for the survey period.
Balance on travel services	The balance on travel services is travel exports minus travel imports.
Capacity	Capacity in terms of guest rooms/units or bed spaces is the maximum number available to accommodate paying guests during the survey period. Capacity closed temporarily for seasonal reasons is included.
Country of intended stay	For Australian residents travelling abroad for short-term trips, this relates to the country in which they intend to spend the most time.
Country of residence	Refers to the country in which short-term visitors regard themselves as living or as last having lived. The classification of countries in this publication is based on the Standard Australian Classification of Countries. For more detailed information, refer to the Australian Bureau of Statistics publication <i>Standard Australian Classification of Countries (SACC), 1998</i> (Cat. no. 1269.0).
Establishments	All hotels, motels, guest houses and serviced apartments within the scope of the survey which operated for any part of the survey period, or which closed temporarily for the quarter for seasonal reasons.

Gross Domestic Product (GDP)	GDP equals consumption by households and government, plus investment in fixed capital and inventories or where separately identified, investment in fixed capital and investment in inventories, plus exports less imports of goods and services.
Guest nights	The total number of paying guests counted on each night they stayed at the accommodation establishment.
Guest rooms	The maximum number of rooms available at each establishment during the survey period for accommodating short-term paying guests. Units and apartments within serviced apartments are treated as rooms in these survey results.
Median length of stay	Defined as the length of stay which divides the relevant population into two equal parts, one half of the cases falling below the median and the other half exceeding it.
Occupancy rate	Occupancy expressed as a percentage of total capacity available during the survey period, e.g. for the period $\text{Room occupancy rate (\%)} = \frac{\text{Room nights occupied}}{(\text{Guest rooms}) \times (\text{no. of days in the period})} \times 100$
Person days	Defined as the number of short-term visitor arrivals or short-term resident departures multiplied by the intended length of stay for each visitor or resident.
Purpose of journey	From the September quarter 1994, all statistics relating to purpose of journey are published using the following categories: Convention/conference, Business, Visiting friends/relatives, Holiday, Employment, Education and Other. In tabulations of data collected before September 1994 quarter, the 'Other' category includes 'In transit', and the 'Holiday' category includes 'Student vacation' and 'Accompanying business visitor'.
Room nights available	The total of guest rooms/units available multiplied by the number of days for which each was available during the survey period.
Room nights occupied	The total number of nights each guest room/unit was occupied by a paying guest during the survey period.
Rooms per establishment	The average number of rooms/units per establishment.
Short-term movement	Movements of travellers whose intended or actual length of stay is less than 12 months are classified as short-term. The tables for visitor arrivals and resident departures in this publication relate to short-term movements only.

Star grading	The grading of hotels and motels with facilities and serviced apartments is based on the classification system used by members of the Australian Automobile Association (AAA). The gradings are allocated according to a points system based on the amenities and facilities available to guests. Details of the grading scheme are contained in the RACV-RAASA members' publication <i>Accommodation Australia</i> , or the individual tour guides produced by members of the AAA. For the purpose of classifying establishments to a star grading in this publication, "half" star gradings are ignored (e.g. a two and a half star grading has been shown as a two star).
Takings from accommodation	Gross revenue from the provision of accommodation, including (since 1 July 2000) the Goods and Services Tax (GST). Prior to GST, bed taxes were included. Takings from meals are excluded. Takings from accommodation for each month generally represent the takings received during that month. Where payments are received in advance of, or after, the provision of accommodation to guests, the monthly figure for takings from accommodation may not necessarily bear a direct relationship to the number of guests accommodated during the month.
Tourism consumption	The total consumption made by a visitor or on behalf of a visitor for and during his/her trip and stay at the destination.
Tourism gross value added	Measures the value of tourism gross output at basic prices by all industries which supply tourism products, less the value of the inputs used in producing these tourism products. Gross value added is the preferred national accounts measure of industry production as it excludes taxes and subsidies on products.
Travel exports	All goods and services (e.g. accommodation, meals, entertainment, gifts and souvenirs) acquired for personal use by non-resident travellers in Australia (usually individuals who stay for less than one year).
Travel imports	All goods and services (e.g. accommodation, meals, entertainment, gifts and souvenirs) acquired for personal use by Australians travelling abroad (usually for less than one year).

APPENDIX

FEATURE ARTICLES PUBLISHED IN TOURISM INDICATORS

Issue	Article title	Page
September quarter 2001	Counts of accommodation establishments and capacity at September 2001	8–19
September quarter 2001	Business expectations — major tourism related industries	20–24
June quarter 2001	Tourist accommodation developments since 1998	8–14
June quarter 2001	Cultural funding and museums — a tourism perspective	15–19
June quarter 2001	Caravan registrations	20–21
March quarter 2001	The accommodation, cafes and restaurants industry, 1999–2000	8–9
December quarter 2000	Tourist accommodation: an analysis over the Olympic period	13–19
December quarter 2000	Holiday flats, caravan parks and visitor hostels — calendar year 2000 results	8–12
September quarter 2000	Tourism and the household expenditure survey	9–12
September quarter 2000	Holiday flats, caravan parks and visitor hostels, September quarter 2000	6–8
June quarter 2000	The cafes and restaurants and the takeaway food industries, 1998–99	21–23
June quarter 2000	Counts of accommodation establishments at the end of 1999	14–20
June quarter 2000	Holiday flats, caravan parks and visitor hostels, June quarter 2000	11–13
June quarter 2000	Australian National Accounts: Tourism Satellite Account 1997–98	8–10
March quarter 2000	A Tourism Satellite Account for Australia, 1997–98	14–17
March quarter 2000	Survey of Business Expectations	11–13
March quarter 2000	Holiday flats, caravan parks and visitor hostels	9–10
December quarter 1999	Tourist Accommodation Developments	7–8
December quarter 1999	Survey of Tourist Accommodation — annual comparisons	9–10
September quarter 1999	Retirement and near retirement: short term resident departures	8–9
June quarter 1999	Accommodation Industry Survey, 1997–98	8–12

Issue	Article title	Page
June quarter 1999	Caravans and campervans	13–14
March quarter 1999	Accommodation Industry Survey, 1997–98	7–8
December quarter 1998	Tourist Accommodation Developments	7
December quarter 1998	Profile of resident departures, 1998	8–11
December quarter 1998	Use of IT by the accommodation, cafes and restaurants industry	12–13
December quarter 1998	Employment in accommodation establishments	14–15
September quarter 1998	International tourism profile: New Zealand	7–11
September quarter 1998	The Year 2000 problem and the accommodation industry	12–13
September quarter 1998	Economic activity of large accommodation businesses, 1993–94 and 1996–97	14–15
June quarter 1998	Serviced apartments in Australian accommodation	8–11
March quarter 1998	The introduction of tourism region classification to the Survey of Tourist Accommodation	10–11
March quarter 1998	Travel agency services	12
December quarter 1997	Downturn in Asian visitor arrivals	4
December quarter 1997	Tourist Accommodation Developments	5
December quarter 1997	Overseas tourism marketing expenditure	6
September quarter 1997	Inclusion of serviced apartments in Survey of Tourist Accommodation	4
September quarter 1997	Business expectations	5
September quarter 1997	Cultural tourism	6
June quarter 1997	Accommodation Industry Survey	4
June quarter 1997	Caravanning — a decade of change	5–6
March quarter 1997	Business Longitudinal Survey	5–6
December quarter 1996	Information technology usage by accommodation establishments	4–5
December quarter 1996	Tourist accommodation, 1996	6
September quarter 1996	Clubs, pubs, taverns and bars	4–6

FOR MORE INFORMATION...

- INTERNET* **www.abs.gov.au** the ABS web site is the best place to start for access to summary data from our latest publications, information about the ABS, advice about upcoming releases, our catalogue, and Australia Now—a statistical profile.
- LIBRARY* A range of ABS publications is available from public and tertiary libraries Australia-wide. Contact your nearest library to determine whether it has the ABS statistics you require, or visit our web site for a list of libraries.
- CPI INFOLINE* For current and historical Consumer Price Index data, call 1902 981 074 (call cost 77c per minute).
- DIAL-A-STATISTIC* For the latest figures for National Accounts, Balance of Payments, Labour Force, Average Weekly Earnings, Estimated Resident Population and the Consumer Price Index call 1900 986 400 (call cost 77c per minute).

INFORMATION SERVICE

Data which have been published and can be provided within five minutes are free of charge. Our information consultants can also help you to access the full range of ABS information—ABS user-pays services can be tailored to your needs, time frame and budget. Publications may be purchased. Specialists are on hand to help you with analytical or methodological advice.

- PHONE* **1300 135 070**
- EMAIL* **client.services@abs.gov.au**
- FAX* 1300 135 211
- POST* Client Services, ABS, GPO Box 796, Sydney 1041

WHY NOT SUBSCRIBE?

ABS subscription services provide regular, convenient and prompt deliveries of ABS publications and products as they are released. Email delivery of monthly and quarterly publications is available.

- PHONE* 1300 366 323
- EMAIL* subscriptions@abs.gov.au
- FAX* 03 9615 7848
- POST* Subscription Services, ABS, GPO Box 2796Y, Melbourne 3001



2863400009015
ISSN 1321-4144

RRP \$28.00